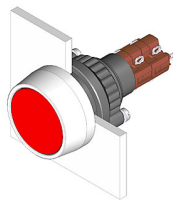


# EAO – Your Expert Partner for Human Machine Interfaces

## 14-132.0252 - Illuminated pushbutton actuator

### 14-132.0252 - Illuminated pushbutton actuator



*Attention: The preview is based on a sample product. This can differ from your current configuration.*

#### Mounting

Mounting cut-out Design  $\varnothing$  22,3 mm raised

#### Front

Front dimension  $\varnothing$  29 mm  
Front shape round

#### Other Attributes

Weight 0,015 kg

#### Operating-/Indication part

Lens illumination illuminative

#### IP-Rating

Front protection IP67

#### Connection Method

Terminal Solder

#### Actuator

Switching action Momentary  
Housing colour black  
Housing material Plastic

#### Switching element

Switching system Snap-action switching element  
Switching current 5 A  
Contacts 2 NC + 2 NO  
Contact material  
Switching voltage 250 V AC

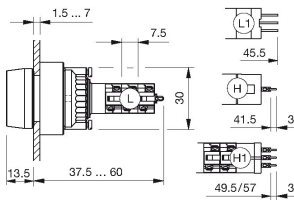
#### Function

Illuminated pushbutton

# EAO – Your Expert Partner for Human Machine Interfaces

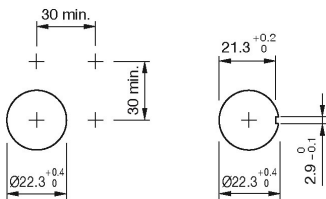
14-132.0252 - Illuminated pushbutton actuator

## Dimensions

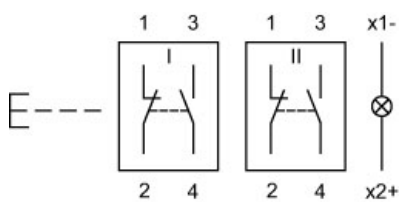


L = Solder terminal

## Mounting cut-outs



## Wiring diagram



## Legend

Contacts: NC = Normally closed, NO = Normally open  
Switching action: B = Momentary