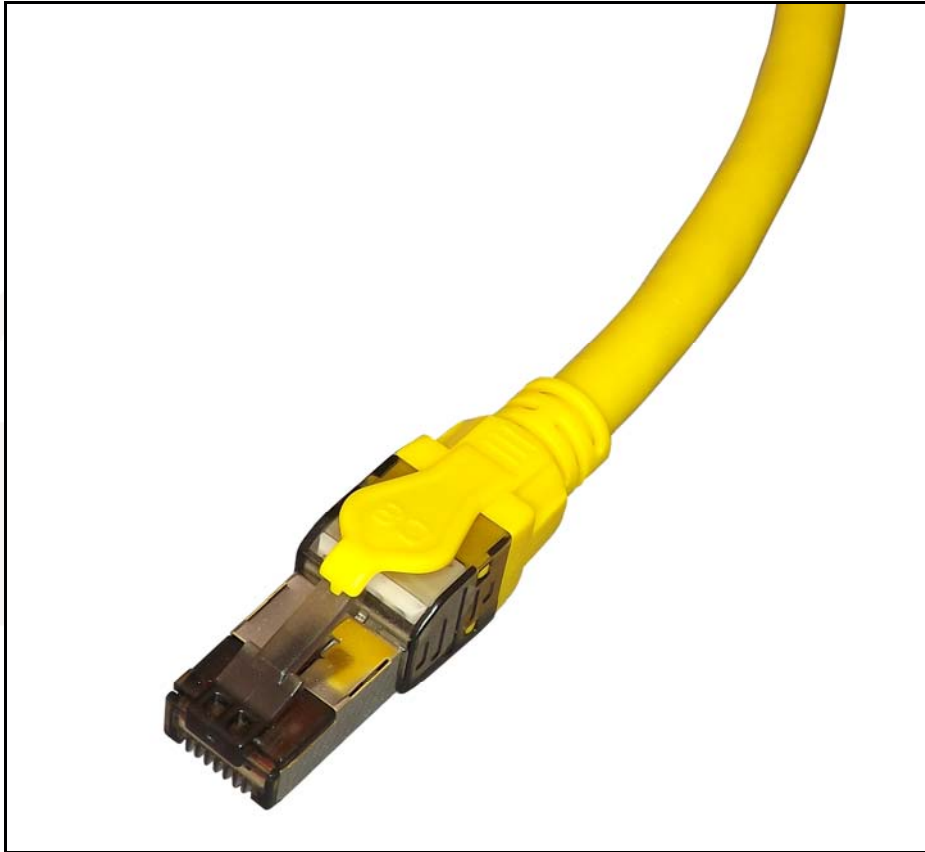


Category 8 Patch Leads, Shielded



High Performance Category 8 Patch Leads, Shielded (SEPZ1/2/3/5yw)

TUK's Category 8 patch leads are designed, manufactured and tested in accordance with the ISO and TIA standards for Cat 8. Ideal for installation in areas that require high data transfer speeds exceeding 40Gbps. Factory manufacture ensures sensible pricing compared to equivalent product produced with field termination plugs.

Features

- Transmission performance in compliance with the ANSI/TIA 568C.2-1 specifications for Category 8 cabling systems
- Consists of 4 twisted pairs of 24AWG screened stranded cable
- Terminated with high gold plated RJ45 shielded Category 8 plug
- Individually tested as part of a 30m channel – see graphic below

Specifications

- Colour: Yellow

- **Material:**
 - RJ45 plug
 - Housing: PC, UL 94V-2, transparent black colour
 - Contact material: Nickel plated phosphor bronze
 - Contact finish: 50µ"/1.27µm gold plated on surface contact area
 - Shield: copper with nickel plated
 - PCB: UL 94V-0
 - The structure complies with the IEC60603-7 requirement
 - Strain relief
 - PC, UL 94V-2, yellow colour (RAL1021)
 - Cable
 - Jacket: LSZH
 - Conductor: 24 AWG/0.51mm stranded copper
 - Shield: Aluminium foil on each pair, tinned copper clad with steel braid

- Cable structure: Category 8 STP/FTP, 4 twisted pair

- Available in below lengths or to order:

1 metre	SEPZ1yw
2 metre	SEPZ2yw
3 metre	SPEZ3yw
5 metre	SEPZ5yw

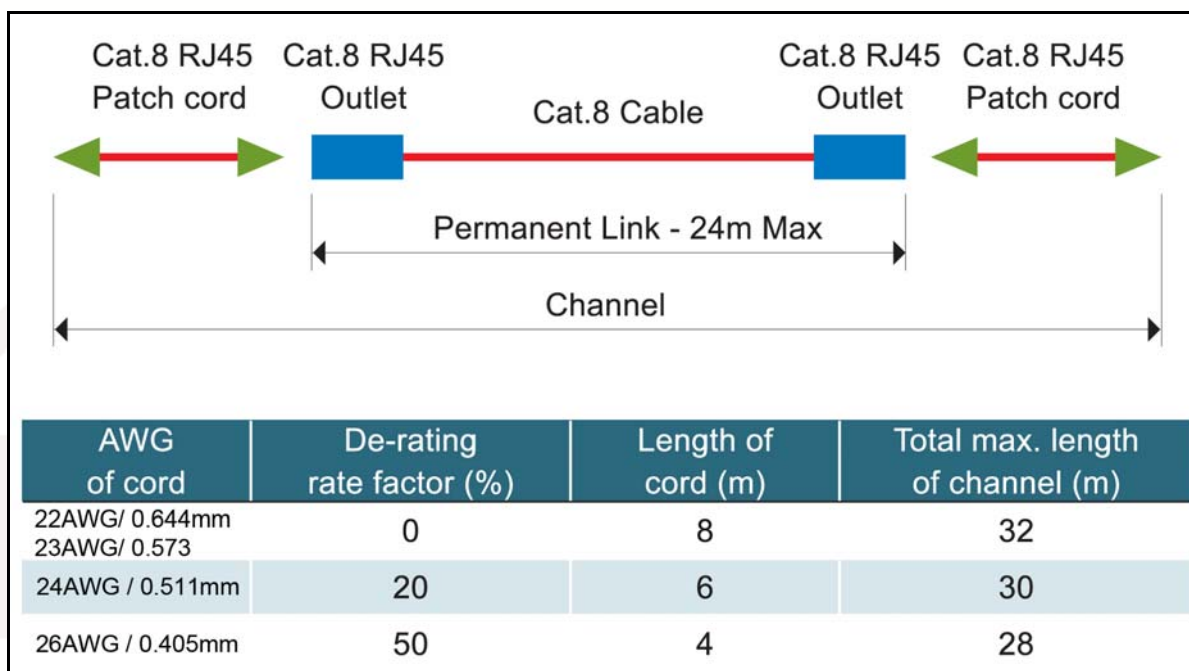
EAN:

SEPZ1yw	5055386507280
SEPZ2yw	5055386507297
SEPZ3yw	5055386507303
SEPZ5yw	5055386507310

Commodity Code: 85444290

Packaging:

Individually polythene bagged and marked with length



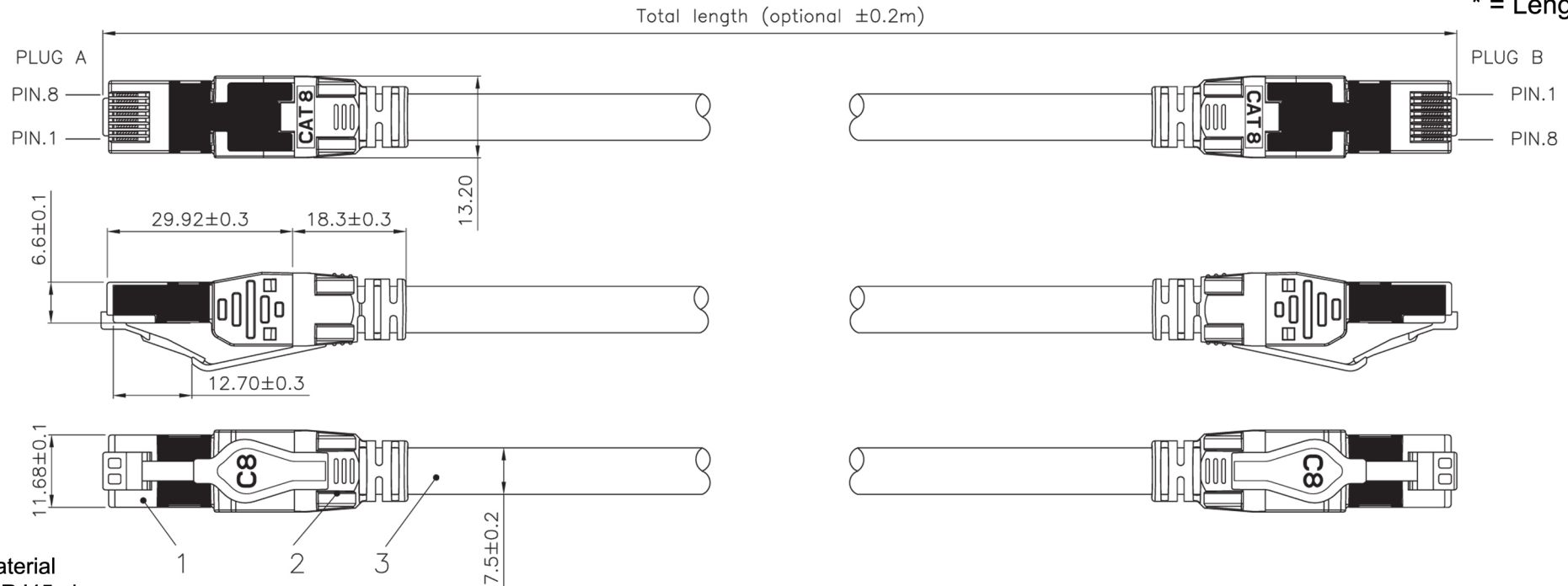
Attribute	Category 5e	Category 6	Category 6A	Category 7/7 _A	Category 8
Frequency	100 MHz	250 MHz	500 MHz	1000 MHz	2000 MHz
Maximum Data Rate	1000Base-T	1000Base-T	10GBase-T	10GBase-T	25GBase-T 40GBase-T
Distance	100 meters	100 meters	100 meters	100 meters	30 meters
Number of Connectors in Channel	4	4	4	4	2
Cable Construction	UTP or Shielded	UTP or Shielded	UTP or Shielded	Shielded	Shielded
Connector Type	RJ45	RJ45	RJ45	Non-RJ45	Class I: RJ45 Class II: Non-RJ45

ISO (cabling)	ISO (components)	Corresponds to	TIA (cabling and components)
Class D	Category 5e	→	Category 5e
Class E	Category 6	→	Category 6
Class EA	Category 6A	→	Category 6A
Class I	Category 8.1	→	Category 8
Class FA	Category 7 _A	No equivalent	
Class II	Category 8.2	→	Class II*

ROHS Compliant

Code: **SEPZ*yw**

* = Length



Material

1. RJ45 plug

Housing: PC, UL 94V-2. transparent black colour

Contact material: Nickel plated phosphor bronze

Contact finish: 50 micro-inch gold plated on surface contact area

Shield: copper with nickel plated

PCB: UL 94V-0

The structure complied with the IEC60603-7 requirement

2. Strain relief: PC, UL 94V-2, yellow colour (RAL1021)

3. Cable

Cat 8 STP/FTP 4 twisted pair

Jacket: LSZH material

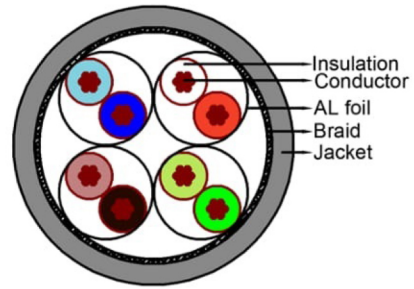
Conductor: 24 AWG/0.51mm stranded copper

Shield: Aluminium foil on each pair, tinned copper clad with steel braid

4. Cable structure: STP/FTP, 4 twisted pair

Technical Data Sheet

Cat 8 S-FTP 4 Pairs 24AWG Screened Stranded Cable



Category & Standard Compliance	ANSI/TIA568.2-D Category 8, ISO/IEC TR11801-1-2017 , IEC61156-10 Cat.8.1
Flammability rating	UL444 CM or CMR, IEC60332-1-2, IEC60332-3-24
LSZH	Acidity: IEC60754-2, Smoke density: IEC61034-2
Environmental Compliance	RoHS
Marking on Sheath	
LSZH	(T) S/FTP PATCH CABLE 24AWG 4PR LSZH RATED ANSI/TIA-568.2-D CAT.8 & ISO/IEC 11801 CLASS I XXXXXXXX-X XXXXM

Ordering information					
Sheath material	P/N	Color-RAL	P/N	Length/ Packaging	P/N
LSZH	ABSIA	Yellow-RAL 1021	06011021	1000FT, wooden reel	34

Cable material & structure	
Conductor	Bare Copper, 24AWG 0.192mm
Insulation	Skin-Foam-Skin PE, OD 1.4mm
Foil Screen	Aluminum/PET, T=50/12μm
Braid	Tinned copper, 0.1mm x 6 x 16, min. 45% coverage
Drain Wire	N/A
Sheath	LSZH, T=0.75mm, OD7.4 ± 0.2mm
Mechanical & environmental performance	
Pulling Tension	Max. 100N
Bending Radius	Min. 50mm(12x cable OD)
Installation Temperature	0 to 50°C
Storage Temperature	-20 to 70°C (Under static conditions)

Technical Data Sheet

Cat 8 S-FTP 4 Pairs 24AWG Screened Stranded Cable

Operation Temperature	-10 to 60°C (Under static conditions)
Electrical performance	
Conductor Resistance	Max. 4.2ohms / 30m, @20°C, ASTM D4566
Resistance Unbalance	Between 2 conductors, max. 4%, @20°C, ASTM D4566
Dielectric Strength	1200 V dc or 850 V ac for 2secs, UL444
Insulation Resistance	Test Voltage 100V-550V DC, min. 5000 mega-ohms / m, @20°C, ASTM D4566 & IEC61156-6
Mutual Capacitance	N/A
Capacitance Unbalance	Max. 99 pF / 30m @1kHz, Pair to Ground, @20°C, ASTM D4566
Propagation Delay Skew	Max. 13.5 ns / 30m, @20°C
Nominal Velocity Propagation	73.5%

Transmission Characteristics, 30M@20°C

FREQ MHz	*Attenuation (max. dB)	RL (min. dB)	NEXT (min. dB)	ACRF (min. dB)	TCL (min. dB)	Prop. Delay (max. ns)
1	2.0	20.0	75.3	75.0	40.0	171.0
4	2.0	23.0	66.3	67.0	40.0	165.5
8	2.0	24.5	61.8	60.9	36.5	163.9
10	2.0	25.0	60.3	59.0	35.0	163.5
16	2.2	25.0	57.2	54.9	31.9	162.8
20	2.5	25.0	55.8	53.0	30.5	162.5
25	2.8	25.0	54.3	51.0	29.0	162.2
31.25	3.1	25.0	52.9	49.1	27.6	162.0
62.5	4.4	23.6	48.4	43.1	23.1	161.4
100	5.6	22.2	45.3	39.0	20.0	161.1
200	7.9	20.1	40.8	33.0	15.5	160.8
250	8.9	19.4	39.3	31.0	14.0	160.7
300	9.8	18.9	38.1	29.5	12.8	160.6
400	11.4	18.0	36.3	27.0	11.0	160.6
500	12.8	17.3	34.8	25.0	9.5	160.5
600	14.1	16.8	33.6	23.4	8.3	160.4
1000	18.6	15.2	30.3	19.0	7.0	160.3
1500	23.2	14.0	27.7	15.5	7.0	160.3
2000	27.2	13.1	25.8	13.0	7.0	160.2

The Channel connection configuration consists of 24 metres horizontal cable and 6 metres (1+5 & 3+3 & 4+2) patch cord at both ends which are installed with TUK CAT8 keystone jacks and TUK CAT8 field termination plugs.

Rev Date: 14/01/2019