

3-jaw scroll chuck KRF

With base plate



Application:

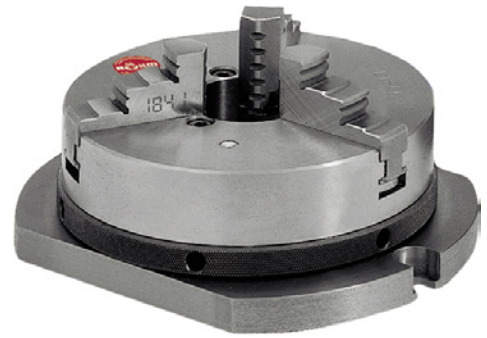
For clamping, positioning and conveying ring-shaped workpieces.

Execution:

- Cast body
- Clamped with knurled ring on the external diameter of the chuck
- In order to retain a constant clamping force over time, the lathe chuck must be lubricated regularly
- centric clamping

Delivery:

1 scroll chuck with 1 set of drilling jaws, 1 set of turning jaws, ref. no. 070 with reversible jaws and 1 clamping pin



Art. no.	22368 070
Brand	RÖHM
Manufacturer Part Number	150595
Number of jaws	3 PCS
Outer diameter	100 mm
Clearance hole	16 mm
Base plate diameter	100 mm
Base plate width	70 mm
Drilling clearance	87 mm
Groove width	9 mm
Height with jaws	60 mm
Gross Weight	1.900 kg
Product Group	203

EAN

4019208053394