

Precision press knurl HSSE-PM with chamfer form AA

for use on knurl presses 19003-19009



Application:

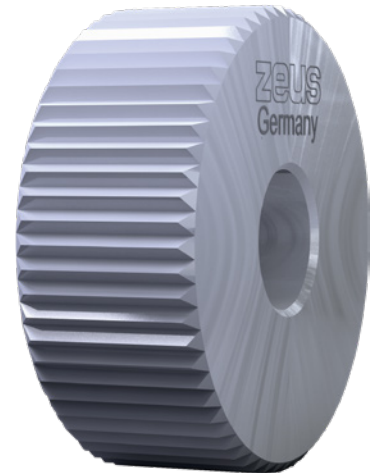
For creating knurl profiles in accordance with DIN 82 RAA knurl in steel, stainless steel and NF metal material groups.

Execution:

- hardness: approx. HRC 62-64, teeth milled fine, face sides and hole ground, HSSE PM, 45° chamfer

Advantage:

- High wear resistance
- High hot hardness and compressive strength



Art. no.	19014 052
Brand	ZEUS
Manufacturer Part Number	41007741
Partition	0.5 mm
Diameter	20 mm
Width	10 mm
Bore diameter	6 mm
Form	AA
Knurling shape created on workpiece (DIN 82)	RAA
Material to be processed	Steel, Stainless steel, Non-ferrous metal
Min./max. Vc in steel	25-50 m/min
Min./max. Vc in stainless steel	15-50 m/min
Min./max. Vc in non-ferrous metals	25-90 m/min
DIN	403
Gross Weight	0.024 kg
Product Group	1FP