



**MATERIAL**

Anodised aluminium with oval flat cross section, ground surface, matte finish.

**STANDARD EXECUTIONS**

Threaded blind holes.

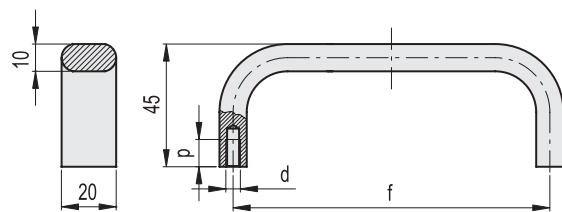
- **RHMF-01**: natural colour.
- **RHMF-04**: black colour.

**SPECIAL EXECUTIONS ON REQUEST**

Different lengths.

**OTHER STANDARD EXECUTIONS AVAILABLE**

Version RH-MF-CLEAN (see page 394).



| Code           | Code           | f   | d  | p  | △   |
|----------------|----------------|-----|----|----|-----|
| RHMF-20.120.01 | RHMF-20.120.04 | 120 | M5 | 10 | 85  |
| RHMF-20.140.01 | RHMF-20.140.04 | 140 | M5 | 10 | 93  |
| RHMF-20.180.01 | RHMF-20.180.04 | 180 | M5 | 10 | 116 |
| RHMF-20.200.01 | RHMF-20.200.04 | 200 | M5 | 10 | 125 |
| RHMF-20.350.01 | RHMF-20.350.04 | 350 | M6 | 12 | 193 |



**MATERIAL**

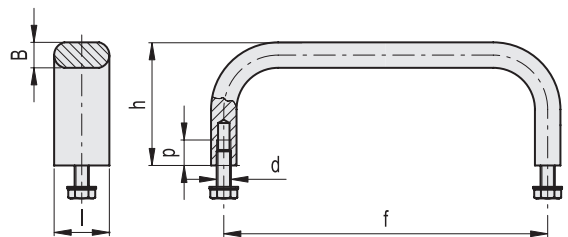
AISI 303 stainless steel, flat oval cross section, ground surface, semi-matte finish.

**STANDARD EXECUTION**

Threaded holes for AISI 304 stainless steel screws and washers, included in the supply.

**SPECIAL EXECUTIONS ON REQUEST**

- Handles with different lengths.
- Handles with ground and shotblasted surface, semi-matte finish obtained by electropolishing.



| Code           | f   | d     | p  | B  | h  | l    | △   |
|----------------|-----|-------|----|----|----|------|-----|
| RHEF-12.100.31 | 100 | M5x10 | 10 | 8  | 40 | 12   | 105 |
| RHEF-12.120.31 | 120 | M5x10 | 10 | 8  | 40 | 12   | 118 |
| RHEF-12.150.31 | 150 | M5x10 | 10 | 8  | 40 | 12   | 138 |
| RHEF-12.180.31 | 180 | M5x10 | 10 | 8  | 40 | 12   | 158 |
| RHEF-12.250.31 | 250 | M5x10 | 10 | 8  | 40 | 12   | 205 |
| RHEF-12.350.31 | 350 | M5x10 | 10 | 8  | 40 | 12   | 271 |
| RHEF-19.100.31 | 100 | M6x12 | 12 | 10 | 45 | 19.5 | 220 |
| RHEF-19.120.31 | 120 | M6x12 | 12 | 10 | 45 | 19.5 | 256 |
| RHEF-19.150.31 | 150 | M6x12 | 12 | 10 | 45 | 19.5 | 279 |
| RHEF-19.180.31 | 180 | M6x12 | 12 | 10 | 45 | 19.5 | 339 |
| RHEF-19.250.31 | 250 | M6x12 | 12 | 10 | 45 | 19.5 | 434 |
| RHEF-19.350.31 | 350 | M6x12 | 12 | 10 | 45 | 19.5 | 573 |

