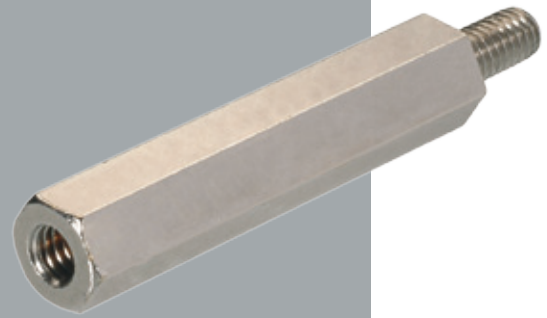


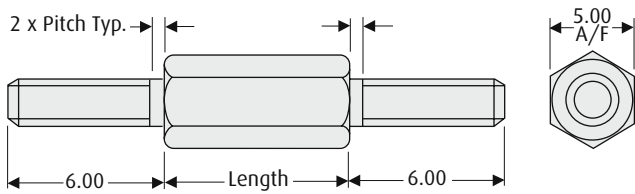
Metric Spacers

Brass Hexagonal Pillars

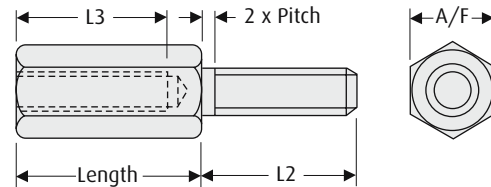
- Available in a choice of M3, M4, M5 and M6 thread sizes, with a variety of standard body lengths.
- Base material is free-machining brass, with nickel plating.



MALE/MALE



MALE/FEMALE



CALCULATION OF L3 (min)

Series	Length mm												
	4	5	6	7	8	9	10	11	12	13	14	15	16+
R30-300	2.0	2.5	3.0	4.5	5.5	6.0	6.0	6.0	6.0	6.0	6.0	6.0	6.0
R30-301	2.5	3.0	4.0	5.0	5.0	5.0	5.0	8.0	8.0	8.0	8.0	8.0	8.0
R40-300	x	x	2.5	3.5	4.5	5.5	6.5	8.0	8.0	8.0	8.0	8.0	8.0
R50-300	x	x	x	x	4.0	5.5	6.0	8.0	8.0	8.0	10.0	10.0	10.0
R60-300	x	x	x	x	x	x	5.0	6.0	7.0	8.5	9.5	10.5	11.5

HOW TO ORDER


R XX - XXX XX 02

SERIES CODE

THREAD SIZE & STYLE

R30-300	M3 Male/Female, 5.0mm A/F, L2 = 6mm
R30-301	M3 Male/Female, 5.0mm A/F, L2 = 8mm
R30-400	M3 Male/Male
R40-300	M4 Male/Female, 7.0mm A/F, L2 = 8mm
R50-300	M5 Male/Female, 8.0mm A/F, L2 = 10mm
R60-300	M6 Male/Female, 10.0mm A/F, L2 = 10mm

FINISH

02 Nickel 

LENGTH (mm)

04-16, 18, 20, 25, 30, 35, 40	R30
06-16, 18, 20, 25, 30, 35	R40
08-16, 18, 20, 25, 30, 35, 40	R50
10-16, 18, 20, 25, 30, 40	R60

All dimensions in mm.