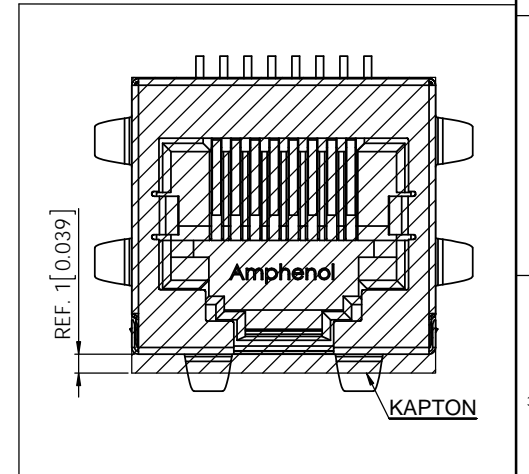
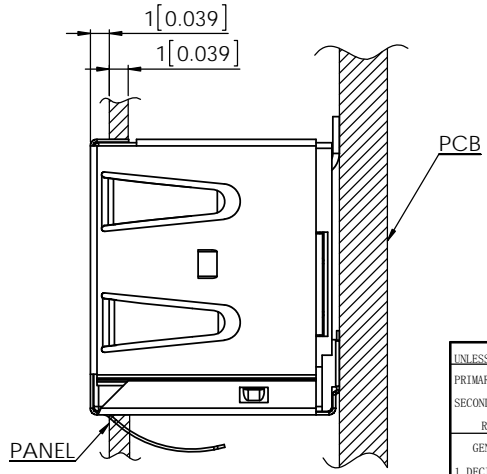
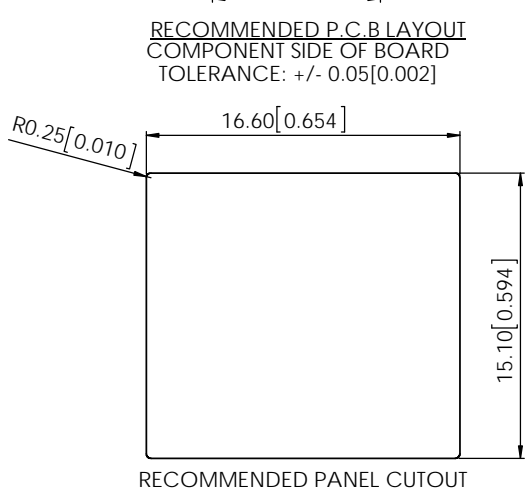


REVISIONS			
REV	DESCRIPTION, ECN, EAR NO.	DATE	APP'D
A	PROPOSAL DRAWING	JUN18/15	Lawrence



- MATERIALS:**
 HOUSING: HIGH TEMPERATURE ENGINEERING THERMOPLASTIC, FLAMMABILITY RATING UL94 V-0, COLOUR: BLACK
 CONTACTS: PHOSPHOR BRONZE
 PLATING: SELECTIVE GOLD PLATING ON MATING SURFACES:
 100u" [2.54 MICRONS] MIN. MATTE TIN ON SOLDER TAILS
 50u" [1.27 MICRONS] MIN. NICKEL UNDERPLATING OVERALL
 SHIELD: STAINLESS STEEL WITH MATTE TIN PLATING
- COPLANARITY SPECIFICATION:**
 WITH THE MODULAR JACK SITTING ON A LEVEL SURFACE, THE MAXIMUM GAP BETWEEN THE LEVEL SURFACE AND ALL TERMINAL TAILS AND BOTH FITTING NAILS IS 0.10 [0.004].

RECOMMENDED P.C.B LAYOUT
 COMPONENT SIDE OF BOARD
 TOLERANCE: +/- 0.05 [0.002]



AMPHENOL PART NUMBER: RJE23-188-3X1X-X

GOLD PLATING OPTION

- 1= 6u" [0.15 MICRONS] GOLD PLATING
- 2= 15u" [0.38 MICRONS] GOLD PLATING
- 3= 30u" [0.76 MICRONS] GOLD PLATING
- 4= 50u" [1.27 MICRONS] GOLD PLATING

MODIFIER CODE

- 5= WITH KAPTON TAPE
- 6= WITHOUT KAPTON TAPE

PACKAGING OPTION

- BLANK = STANDARD (TRAY WITHOUT MYLAR)
- T = TAPE AND REEL

UNLESS SPECIFIED OTHERWISE	DRAWN	Justin Feng	JUN18/15
PRIMARY UNITS	MILLIMETERS	CHECKED	L.Chan JUN18/15
SECONDARY	INCHES	M.E. APP'D	
REFERENCE IN PARENTHESES	Q.A. APP'D		
GENERAL TOLERANCES FOR MM	DWG APPR.		
1 DECIMAL PLACE	ENG. REL. NO.		
2 DECIMAL PLACES	REF.		
3 DECIMAL PLACES	THIRD ANGLE PROJECTION		
ANGULAR DEGREES	DO NOT SCALE DRAWING		

Amphenol Canada Corp.
www.amphenolcanada.com

TITLE:
 RJ45 SINGLE PORT MODULAR JACK,
 TOP ENTRY, 8P8C, SURFACE MOUNT,
 SHIELD WITH TABS-RoHS COMPLIANT

DWG. NO. **P-RJE23-188-3X1X-X** REV **A**

CODE ID NO. **03554** DWG SIZE: **C** SCALE: **5:1** SHEET **1 OF 1**