

## Type ER precision collet chuck

GERC HP, DIN 6499/ISO 15488-B, concentricity of 2 µm

**FAHRION®**  
FAR BEYOND PRECISION

### Application:

For HSC machining with high-precision machining results.

### Execution:

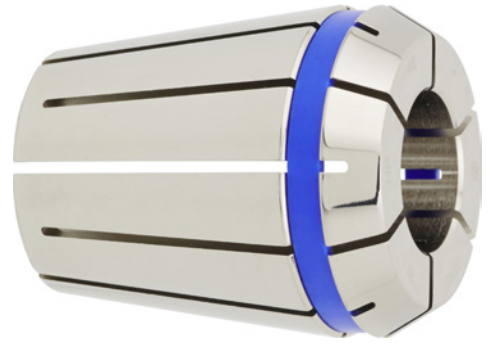
- HP collets with small concentricity and repeat tolerance of 2 µm (for system tolerance of 3 µm and with 3 x dia. maximum = 50 mm), clamp bridge h 10.
- For ATORN precision collet chucks and Fahrion CentroP precision spring collet chucks.
- With FAHRION | Protect corrosion protection for longer service life.
- Surface super-finished for enhanced retention force.

### Advantage:

- Greater concentricity extends tool service life.
- Collets do not need to be replaced as often or can be used longer for specific applications.

### Delivery:

1x type ER precision collet chuck.



|                                 |                  |
|---------------------------------|------------------|
| <b>Art. no.</b>                 | <b>23323 532</b> |
| <b>Brand</b>                    | FAHRION          |
| <b>Manufacturer Part Number</b> | 13613010500      |
| <b>Collet type</b>              | 426E GERC16-HP   |
| <b>Clamping diameter</b>        | 5 mm             |
| <b>Min./max. clamping range</b> | 1-10 mm          |
| <b>Outer diameter</b>           | 17 mm            |
| <b>Length</b>                   | 27.5 mm          |
| <b>Coolant supply</b>           | External         |
| <b>Clamping bypass</b>          | -0.5 mm          |
| <b>Gross Weight</b>             | 0.025 kg         |
| <b>Product Group</b>            | 235              |

### EAN

4054631173721