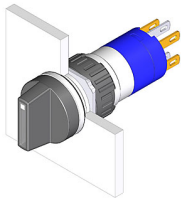


# EAO – Your Expert Partner for Human Machine Interfaces

## 52-271.022 - Selector switch 2 positions

### 52-271.022 - Selector switch 2 positions



*Attention: The preview is based on a sample product. This can differ from your current configuration.*

#### Mounting

Mounting cut-out  
Design Ø 16 mm  
raised

#### Front

Front dimension  
Front shape Ø 18 mm  
round

#### Other Attributes

Weight 0,006 kg

#### Operating-/Indication part

Switching angle 90° right  
Lever illumination  
Lever shape short  
Lever material Plastic

#### IP-Rating

Front protection IP65

#### Connection Method

Terminal Solder 2.8 x 0.5 mm

#### Actuator

Switching action Rest - Maintain

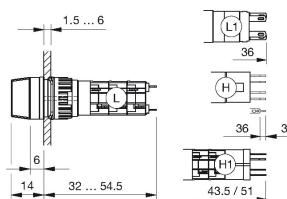
#### Switching element

Rotary positions 2  
Switching system Snap-action switching element  
Contacts 1 NC + 1 NO  
Switching current 5 A  
Contact material gold-plated silver  
Switching voltage 250 V AC

# EAO – Your Expert Partner for Human Machine Interfaces

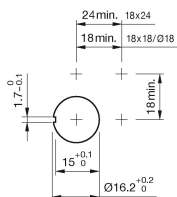
52-271.022 - Selector switch 2 positions

## Dimensions

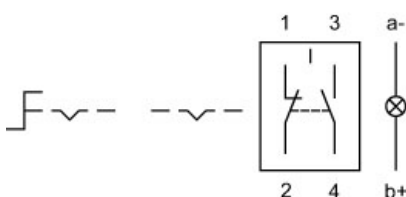


H = Universal terminal 2.0 x 0.5 mm

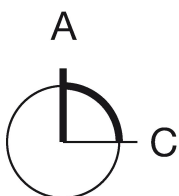
## Mounting cut-outs



## Wiring diagram



## Switching positions



## Additional information

illuminative

## Legend

Contacts: NC = Normally closed, NO = Normally open  
Switching action: A = Rest, C = Maintained