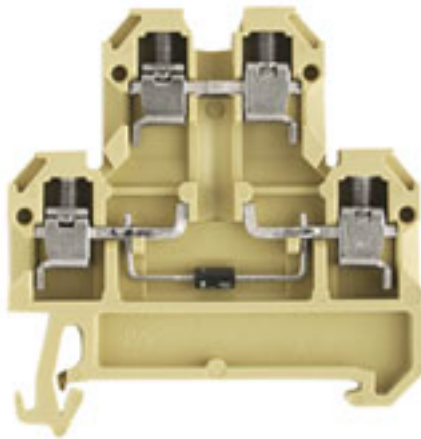


**SAK Series**  
**DK 4/35 2D GET.SCH. A1**

**Weidmüller Interface GmbH & Co. KG**  
Klingenbergstraße 16  
D-32758 Detmold  
Germany  
Fon: +49 5231 14-0  
Fax: +49 5231 14-292083  
www.weidmueller.com

**Klippon® Connect with clamping yoke Technology**

The high reliability and variety of designs of the terminal blocks with clamping yoke connections make planning easier and optimises operational safety. Klippon® Connect provides a proven response to a range of different requirements.

**General ordering data**

Type	DK 4/35 2D GET.SCH. A1
Order No.	<a href="#">0396660000</a>
Version	SAK Series, Component terminal, Rated cross-section: 4 mm <sup>2</sup> , Screw connection
GTIN (EAN)	4008190126551
Qty.	25 pc(s).

**SAK Series**  
**DK 4/35 2D GET.SCH. A1**

**Weidmüller Interface GmbH & Co. KG**  
 Klingenbergstraße 16  
 D-32758 Detmold  
 Germany  
 Fon: +49 5231 14-0  
 Fax: +49 5231 14-292083  
 www.weidmueller.com

**Technical data****Dimensions and weights**

Width	6 mm	Width (inches)	0.236 inch
Height	50 mm	Height (inches)	1.969 inch
Depth	52.5 mm	Depth (inches)	2.067 inch
Net weight	12.28 g		

**Temperatures**

Continuous operating temp., min.	-50 °C	Continuous operating temp., max.	100 °C
----------------------------------	--------	----------------------------------	--------

**Material data**

Material	PA 66	Colour	beige / yellow
UL 94 flammability rating	V-2		

**System specifications**

Version	Screw connection, with diode	Tightening torque (clamping screw for copper conductors)	0.5...0.8 Nm
End cover plate required	Yes	Number of potentials	1
Number of levels	2	No. of clamping points per level	2
Number of potentials per tier	1	Levels cross-connected internally	Yes
PE connection	No	Mounting rail	TS 35
N-function	No	PE function	No
PEN function	No		

**Additional technical data**

Explosion-tested version	No	Number of similar terminals	1
Open sides	right	Type of mounting	Snap-on

**Conductors for clamping (rated connection)**

Blade size	0.6 x 3.5 mm	Clamping range, max.	4 mm <sup>2</sup>
Clamping range, min.	0.33 mm <sup>2</sup>	Clamping screw	M 3
Connection cross-section, stranded, max.	4 mm <sup>2</sup>	Connection cross-section, stranded, min.	0.5 mm <sup>2</sup>
Connection direction	on side	Gauge to IEC 60947-1	A3
Number of connections	4	Stripping length	9 mm
Tightening torque, max.	0.8 Nm	Tightening torque, min.	0.5 Nm
Torque level with DMS electric screwdriver	2	Type of connection	Screw connection
Wire connection cross section AWG, max.	AWG 12	Wire connection cross section AWG, min.	AWG 22
Wire connection cross section, finely stranded, max.	4 mm <sup>2</sup>	Wire connection cross-section, finely stranded with wire-end ferrules DIN 46228/1, max.	4 mm <sup>2</sup>
Wire connection cross-section, finely stranded with wire-end ferrules DIN 46228/1, min.	0.5 mm <sup>2</sup>	Wire connection cross-section, finely stranded, min.	0.5 mm <sup>2</sup>
Wire connection cross-section, solid core, max.	4 mm <sup>2</sup>	Wire connection cross-section, solid core, min.	0.5 mm <sup>2</sup>

**Dimensions**

TS 35 offset	27 mm
--------------	-------

Creation date July 2, 2018 11:05:28 AM CEST

## SAK Series DK 4/35 2D GET.SCH. A1

**Weidmüller Interface GmbH & Co. KG**  
 Klingenbergstraße 16  
 D-32758 Detmold  
 Germany  
 Fon: +49 5231 14-0  
 Fax: +49 5231 14-292083  
 www.weidmueller.com

## Technical data

### Rating data

Rated cross-section	4 mm <sup>2</sup>	Rated voltage	380 V
Rated current	10 A	Current at maximum wires	10 A
Volume resistance according to IEC 60947-7-x	1 mΩ	Pollution severity	3

### Classifications

ETIM 3.0	EC000903	ETIM 4.0	EC000903
ETIM 5.0	EC000903	ETIM 6.0	EC000903
UNSPSC	30-21-18-11	eClass 5.1	27-14-11-27
eClass 6.2	27-14-11-27	eClass 7.1	27-14-11-27
eClass 8.1	27-14-11-27	eClass 9.0	27-14-11-27
eClass 9.1	27-14-11-47		

### Product information

Descriptive text technical data	Diode current max 1 A. (1 N 4007)
---------------------------------	-----------------------------------

### Approvals

Approvals



ROHS	Conform
------	---------

### Downloads

Approval/Certificate/Document of Conformity	<a href="#">DE_PT1381_20160418_096_ISSUE01.pdf</a>
Engineering Data	<a href="#">EPLAN.WSCAD</a>

### Safety note

Safety notice	<a href="#">Safety Information</a>
---------------	------------------------------------