



PROFIBUS Receptacle Connectors

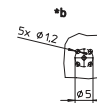
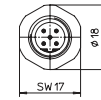
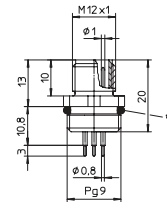
0976 PMC 152



M12 Male

Receptacle connector, M12 male connector for front mounting, 5 poles, B coding, print contacts, chassis side thread PG 9.

– especially suitable for Profibus –



*a O-Ring

*b hole pattern in printed circuit board

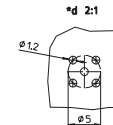
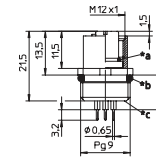
0976 PFC 152



M12 Female

Receptacle connector, M12 female connector for front mounting, 5 poles, B coding, printed contacts, chassis side thread PG 9.

– especially suitable for Profibus –



*a O-Ring

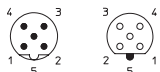
*b O-ring loose enclosed

*c solder contacts potted with epoxy

*d hole pattern in printed circuit board

Pin Assignment

M12 - 5 Poles (B-Coding)





Be Certain with Belden

PROFIBUS Receptacle Connectors

0976 PMC 152 | 0976 PFC 152

Technical Data

Environmental

Degree of protection IP 67 / NEMA 6P
 Operating temperature range -25°C (-13°F) / +90°C (+194°F)

Mechanical

Housing / Molded body CuZn, nickel-plated
 Insert TPU, self-extinguishing
 Contact CuZn, pre-nickeled and 0.8 microns gold-plated
 O-ring FKM
 Mode of connection printed circuit board mount

Electrical

Contact resistance ≤ 5 mΩ
 Nominal current at 40°C 4 A
 Nominal voltage 60 V
 Rated voltage 63 V
 Test voltage 1.5 kV eff. / 60 s
 Insulation resistance > 10⁹ Ω
 Pollution degree 3

Part Number	Pins	
0976 PMC 152	5B	 
0976 PFC 152	5B	 