

Friday, 24 March 2006

HOME

low profile line isolation transformers

HOME

0800 316 6060

Type OEP 1200 1:1 600 Ohm

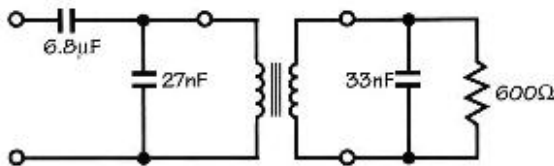


Provides isolation between modems or similar devices and telephone lines. This transformer is designed for use in voice or data transmission circuits where the line d.c. is diverted from the windings by a choke or solid state device. The use of this transformer should enable the equipment it is used with to comply with the relevant requirements of BS6305.

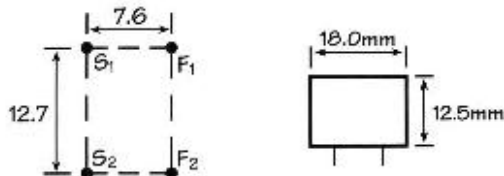
Resin encapsulated in flame retardant cases. The unit is PCB Mounting

Insertion loss	1.5dB max @ 2kHz.
Return loss	-20dB @ 200Hz-4kHz.
Isolation longitudinal	3.54kV RMS or 5kV dc.
Saturation	10V RMS 65V peak.
Balance	Better than 80dB 200Hz-4kHz.
Signal/noise ratio	> 33dB
dc resistance	68 $\Omega$ $\pm$ 10% (NB. not to be tested with a dc current)

## TEST CIRCUIT



DIMENSIONS H = 12.5 W = 18 D = 18



Approved to EN60950 and  
EN41003

BABT Certificate of  
Recognition CR/0126



Type Z1260 1:1 600 Ohm



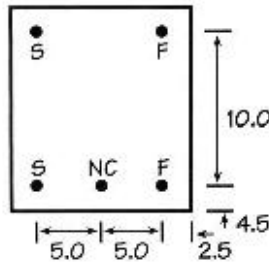
Provides isolation between modems or similar devices and telephone lines. This transformer is designed for use in voice or data transmission circuits where the line d.c. is diverted from the windings by a choke or solid state device. The use of this transformer should enable the equipment it is used with to comply with the relevant requirements of BS6305. This is a lower profile version of the OEP 1200 transformer.

**Resin encapsulated in flame retardant cases. The unit is PCB Mounting**

<b>Insertion loss</b>	1.5dB max @ 2kHz.
<b>Return loss</b>	-20dB @ 200Hz-4kHz.
<b>Isolation longitudinal</b>	3.5kV RMS or 5kV dc.
<b>Saturation</b>	< 10V RMS 65V peak.
<b>Balance</b>	Better than 80dB 200Hz-4kHz.
<b>Signal/noise ratio</b>	> 33dB
<b>dc resistance</b>	68Ω ±10% (NB. not to be tested with a dc current)

**DIMENSIONS**

Height 11mm  
 Width 15mm  
 Length 19mm



Approved to EN60950 and EN41003  
 BABT Certificate of Recognition CR/0126



[OXFORD ELECTRICAL PRODUCTS LTD](http://www.walters-oep.com)

transformer manufacturers,  
 wound components, power  
 supplies, low voltage lighting,  
 switch mode power supplies.

Friday, 24 March 2006

- [HOME](#)
- [Company Profile](#)
- [Products](#)
- [Catalogue](#)
- [Distributors](#)
- [Contacts](#)
- [Quality](#)
- [Can We Help?](#)

## Walters OEP Transformers

Telecoms, LAN, Lighting, Medical, Audio  
 Security, Controls, EPOS, Instrumentation

## Walters OEP Power Supplies

DC - DC Converters  
 Custom Made  
 Switch Mode  
 Linear