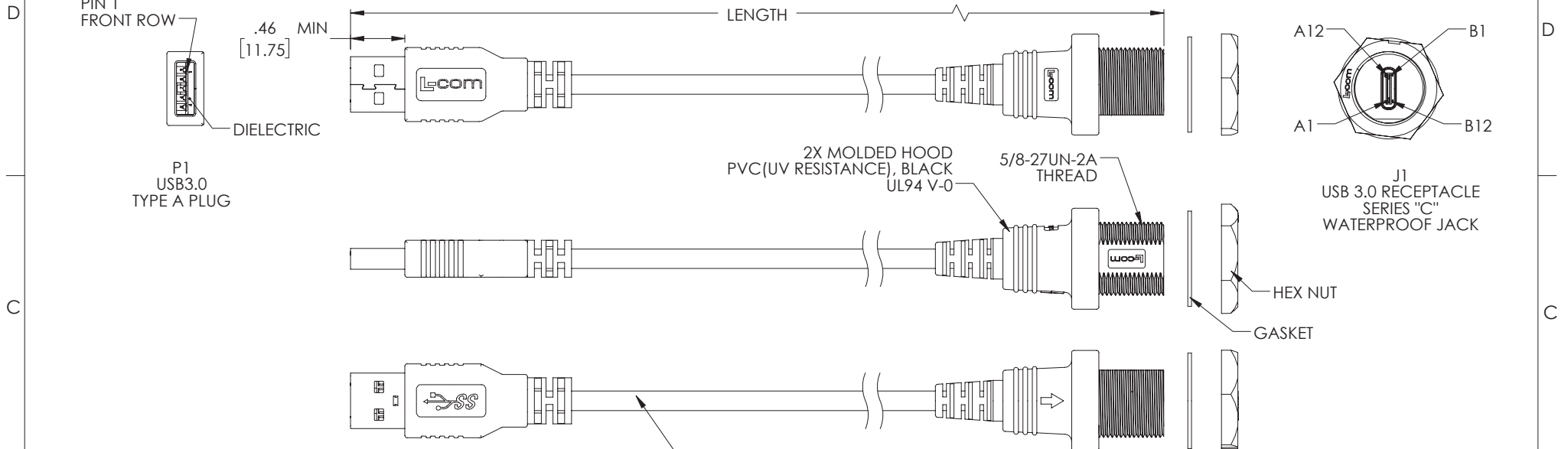


THE INFORMATION CONTAINED IN THIS DRAWING IS THE SOLE PROPERTY OF L-COM, INC. ANY REPRODUCTION IN PART OR WHOLE WITHOUT THE WRITTEN PERMISSION OF L-COM, INC. IS PROHIBITED.

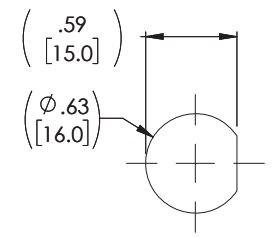
REVISIONS			
REV	DESCRIPTION	DATE	APPROVED
A	CN INITIAL RELEASE	11/20/17	D.CUI
B	ECN 9629: UPDATE CONTACTS FINISH THICKNESS TO 15U" FOR J1 END	01/16/19	B.GATES



WIRING MAP						
"J1"	SIGNAL NAME	CONDUCTOR	"P1"	SIGNAL NAME	COLOR	
A1,B1,A12,B12	GND	INDV.	4	GND	BLACK	
		SHIELDED PAIR DRAIN 1, DRAIN 2	7	GND_DRAIN	N/A	
A4,B4,A9,B9	VBUS	INDV.	1	VBUS	RED	
A5	CC	N/C				
B5	VCONN	N/C				
A6, B6	Dp1	UNSHIELDED	3	D+	GREEN	
A7, B7	Dn1	PAIR	2	D-	WHITE	
A2	SSTxp1	SHIELDED	9	StdA_SSTX+	YELLOW	
A3	SSTxn1	PAIR 1	8	StdA_SSTX-	BLUE	
B11	SSRXp1	SHIELDED	6	StdA_SSRX+	ORANGE	
B10	SSRXn1	PAIR 2	5	StdA_SSRX-	PURPLE	
SHELL	SHIELD	BRAID	SHELL	SHIELD	N/A	

CABLE:
 (1) 32AWG STRANDED TINNED COPPER TWISTED PAIR
 (2) 32AWG SHIELDED STRANDED TINNED COPPER TWISTED PAIR WITH DRAIN WIRE
 (2) 26AWG STRANDED TINNED COPPER CONDUCTORS
 OVERALL ALUMINUM/POLYESTER SHIELD PLUS TINNED COPPER BRAID SHIELD
 JACKET: PVC, BLACK,(UV RESISTANCE) (NOM DIA. .165" [4.2])

PART NUMBER	LENGTH	
	METER	FEET
U3A00026-1M	1.0	3.28



RECOMMENDED PANEL CUTOUT

- NOTES:**
- INGRESS PROTECTION RATING IS IP67 (J1 ONLY,MATED)
 - TYPE "A" CONNECTOR CONTACTS HAVE 30 μINCHES GOLD OVER NICKEL PLATING
TYPE "C" CONNECTOR CONTACTS HAVE 15 μINCHES GOLD OVER NICKEL PLATING
 - CABLE TEMPERATURE RANGE :-20 °C~+80 °C(FIXED)
 - CABLE ASSEMBLY SHALL HAVE 360° SHIELD TERMINATION
 - CABLE ASSEMBLY SHALL BE TESTED FOR CONTINUITY
 - L-COM LOGO AND ARROW ICON MAY BE ON ANY SIDE OF THE OVERMOLD FOR USB SERIES "C" END.
 - CABLE ASSEMBLY SHALL BE INDIVIDUALLY PACKAGED IN ACCORDANCE WITH L-COM SPECIFICATION PS-0031.

UNLESS OTHERWISE SPECIFIED, DIMENSIONS ARE IN INCHES [mm] OVERALL CABLE LENGTH TOLERANCE: ≤12 [305] = +1 [25] / -0 >12 [305] ≤60 [1524] = +2 [51] / -0 >60 [1524] ≤120 [3048] = +4 [102] / -0 >120 [3048] ≤300 [7620] = +6 [152] / -0 >300 [7620] = +3% / -0% ALL OTHER DIMENSIONAL TOLERANCES: .X = ±.2 [5.08] .XX = ±.02 [1.51] .XXX = ±.005 [1.3]	APPROVALS	DATE
	DRAWN BY D.CUI	05/18/17
	CHECKED BY S.PAN	05/18/17
	APPROVED BY B.GATES	05/18/17
PROJECTION	CONFIGURATION DETAILS OF UNDIMENSIONED FEATURES MAY VARY	COLOR VARIATIONS MAY OCCUR

L-com Global Connectivity 50 HIGH STREET NORTH ANDOVER, MA 01845

CATEGORY: **USB 3.0**

PRODUCT DESCRIPTION: **CA USB 3.0 TYPE A-M TO WP TYPE C-F**

SIZE A	FSCM NO. 43321	DWG. NO. U3A00026	REV. B
------------------	--------------------------	-----------------------------	------------------

SCALE: NONE CAD FILE: U3A00026.SLDRAW SHEET 1 OF 1