

Bulgin **Miniature Rectangular** Connectors offer a solution to **smaller wire gauges** with the ability to design to use **multiple-size contacts**. These connectors are **environmentally sealed**.

The connectors are made of rugged thermoplastic and feature silicone rear wire and interfacial seals that allow the connectors to withstand conditions of extreme temperature and moisture. Also, provide reliability and performance on the engine or transmission, solenoid interfaces, on the chassis or in the cab & on motor controllers. These connectors are used in Agriculture, Automotive Industry, Forestry, Recreational, Marine & Mining.

Key Features:

- Insulation Resistance: 1000 megohms minimum at 25°C
- Operating temperatures -55°C to +125°C
- IP68 rating
- Male and Female options
- Integrated latch for mating
- Available with Protective End Caps (PEC)
- Wedgelocks confirm contact alignment and retention
- Accepts 14 - 22 AWG



RECTANGULAR  
Miniature Rectangular Connectors

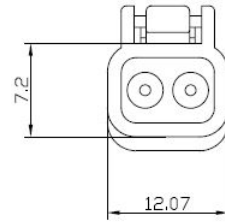


Miniature Rectangular Connectors  
Male



PX0010

- 2, 3, 4, 6, 8 & 12 Contacts
- Male housing
- Socket contacts
- Available in grey



Part Number	Contacts	Key	Termination	Colour	Additional
PX0010S02GY	2	-	Crimp	Grey	-
PX0010S03GY	3	-	Crimp	Grey	-
PX0010S04GY	4	-	Crimp	Grey	-
PX0010S06GY	6	-	Crimp	Grey	-
PX0010S08AGY	8	A	Crimp	Grey	-
PX0010S12AGY	12	A	Crimp	Grey	-

Miniature Rectangular Connectors  
Female



PX0011

- 2, 3, 4, 6, 8 & 12 Contacts
- Female housing
- Plug contacts
- Available in grey



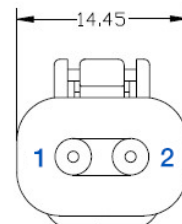
Part Number	Contacts	Key	Termination	Colour	Additional
PX0011P02GY	2	-	Crimp	Grey	-
PX0011P03GY	3	-	Crimp	Grey	-
PX0011P04GY	4	-	Crimp	Grey	-
PX0011P06GY	6	-	Crimp	Grey	-
PX0011P08AGY	8	A	Crimp	Grey	-
PX0011P12AGY	12	A	Crimp	Grey	-

Miniature Rectangular Connectors  
Male - PEC



PX0012

- 2, 3, 4, 6, 8 & 12 Contacts
- Male housing
- Socket contacts
- Available in grey
- Protective end cap



Part Number	Contacts	Key	Termination	Colour	Additional
PX0012S02GY	2	-	Crimp	Grey	PEC
PX0012S03GY	3	-	Crimp	Grey	PEC
PX0012S04GY	4	-	Crimp	Grey	PEC
PX0012S06GY	6	-	Crimp	Grey	PEC
PX0012S08AGY	8	A	Crimp	Grey	PEC
PX0012S12AGY	12	A	Crimp	Grey	PEC

RECTANGULAR  
**Miniature Rectangular Connectors**

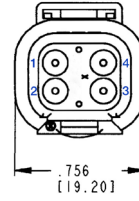


Miniature Rectangular Connectors  
 Female - PEC



PX0013

- 2, 3, 4, 6, 8 & 12 Contacts
- Female housing
- Plug contacts
- Available in grey
- Protective end cap



Part Number	Contacts	Key	Termination	Colour	Additional
PX0013P02GY	2	-	Crimp	Grey	PEC
PX0013P03GY	3	-	Crimp	Grey	PEC
PX0013P04GY	4	-	Crimp	Grey	PEC
PX0013P06GY	6	-	Crimp	Grey	PEC
PX0013P08AGY	8	A	Crimp	Grey	PEC
PX0013P12AGY	12	A	Crimp	Grey	PEC

Contacts

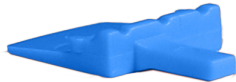


SA1000

- Crimp plug & sockets
- Choice of gold and nickel plated

Part Number	Plating	AWG	Type	Plug / Socket
SA1014	Nickel	16 - 22	Stamped	Plug
SA1015	Nickel	16 - 22	Stamped	Socket
SA1016	Gold	16 - 22	Stamped	Plug
SA1017	Gold	16 - 22	Stamped	Socket

Wedgelocks



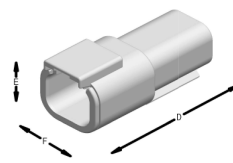
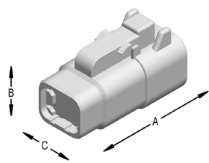
WLM

- Plug & sockets available
- 2, 3, 4, 6, 8 & 12 Contact

\* Wedgelocks are sold separately and are required for confirmation of alignment of contact. Please refer to the chart above to determine part required.

Part Number	Contacts	Plug / Socket
WLMP02	02	Plug
WLMS02	02	Socket
WLMP03	03	Plug
WLMS03	03	Socket
WLMP04	04	Plug
WLMS04	04	Socket
WLMP06	06	Plug
WLMS06	06	Socket
WLMP08	08	Plug
WLMS08	08	Socket
WLMP12	12	Plug
WLMS12	12	Socket

## MINIATURE SERIES DIMENSIONS



Cavity	Male			Female		
	Overall Length A	Overall Height B	Overall Width C	Overall Length D	Overall Height E	Overall Width F
2	1.620 (41.15)	.638 (16.21)	.475 (12.07)	1.085 (27.56)	.508 (12.90)	.651 (16.54)
3	1.620 (41.15)	.638 (16.21)	.640 (16.26)	1.085 (27.56)	.551 (14.00)	.861 (20.73)
4	1.720 (43.69)	.722 (19.61)	.600 (15.24)	1.185 (30.10)	.695 (17.65)	.756 (19.20)
6	1.720 (43.69)	.937 (23.80)	.600 (15.24)	1.185 (30.10)	.817 (20.75)	.756 (19.20)
8	1.720 (43.69)	.796 (20.22)	1.245 (31.62)	1.185 (30.10)	.600 (15.24)	1.245 (31.62)
12	1.720 (43.69)	.796 (20.22)	1.575 (40.01)	1.185 (30.10)	.600 (15.24)	1.575 (40.01)

\* Dimensions are for reference only.

**Electrical:**

No Contacts:	2, 3, 4, 6, 8 & 12
Insulation Resistance:	>1000MΩ
Fluid Resistance:	No damage when exposed
Dielectric Withstanding Voltage:	1500 VAC
Operating Temperature Range:	-55°C to +125°C

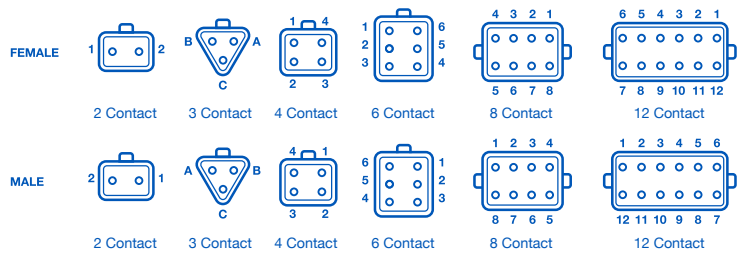
**Material**

Grommet:	Silicone rubber
Insert Retainer:	Thermoplastic
Receptacle Interfacial Seal:	Silicone rubber
Shell:	Thermoplastic
Wedgelocks:	Thermoplastic
RoHS:	Compliant

**Mechanical:**

Sealing:	IP68
Contact Accommodation:	14 - 22 AWG (2.50 - 0.35 mm <sup>2</sup> )
Termination:	Crimp terminals
Cycles:	>100

**Contact Layout (Rear View)**



**Contact Insertion Instructions**

Step One:



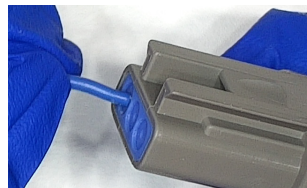
Use a previously crimped contact and wire and hold just behind the contact barrel.

Step Two:



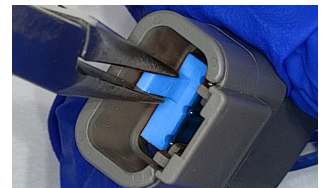
Line the contact up with the grommet.

Step Three:



Push the contact until a click is felt. Check the contact is in place by gently tugging and confirming alignment. Repeat for number of contacts desired

Step Four:



When contacts are in place, insert the appropriate wedgelock until a click is heard. Once male and female housings are prepared the parts can be mated

PX0	XX	X	XX	X	XX
Range	Body Type	Contact Type	Contacts	Key	Colour
PX00	10 = Male 11 = Female 12 = Male Protective End Cap 13 = Female Protective End Cap	S = Socket P = Plug	02 03 04 06 08 12	A = A Key	GY = Grey BK = Black