

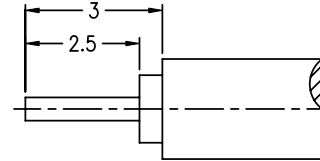
NOTES:

1. MATERIALS AND FINISHES (PLATING THICKNESS IN MICRO-INCHES):
 - HOUSING - BRASS, GOLD PLATING
 - BODY - BERYLLIUM COPPER, GOLD PLATING
 - CONTACT - BRASS, GOLD PLATING
 - INSULATOR - PTFE
2. ELECTRICAL:
 - A. IMPEDANCE: 50 OHM
 - B. FREQUENCY RANGE: DC 0-6 GHz
 - C. DIELECTRIC WITHSTANDING VOLTAGE: 1000 VRMS, MIN.
3. MECHANICAL:
 - A. DURABILITY: 500 CYCLES MIN.
 - B. TEMPERATURE RANGE: - 55°C to +155°C

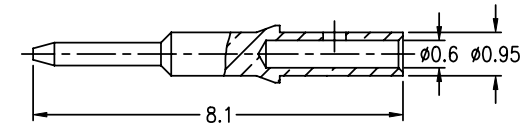
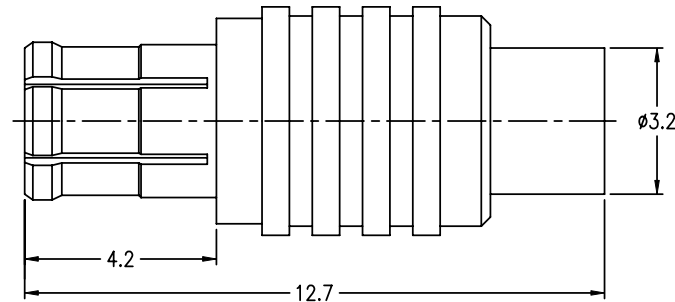
THIRD ANGLE PROJ. 

REVISIONS

REV	DESCRIPTION	DATE	ECO	APPR
B	NO.2 WAS CHANGED \RD-DMB9011401B	01-14-00'	----	JOHNSON
B1	RECOMMENDED CABLE STRIPPING DIM'S WAS CHANGED	05-06-09'	----	ANDY.C
C	ADD DANBURY P/N \RD-DM11040601R3	12-Apr-11'	48532	SH



RECOMMENDED
CABLE STRIPPING DIM'S



CUSTOMER OUTLINE DRAWING

ALL OTHER SHEETS ARE FOR INTERNAL USE ONLY

UNLESS OTHERWISE SPECIFIED, DIMENSIONS ARE IN METRIC AND TOLERANCES ARE:
 <0.5mm ± 0.05mm 0.5 - 6mm ± 0.1mm 6 - 30mm ± 0.2mm 30 - 120mm ± 0.3mm ANGLES ± 1°

NOTICE - These drawings, specifications, or other data (1) are, and remain the property of Amphenol Corp. (2) must be returned upon request; and (3) are confidential and not to be disclosed to any person other than those to whom they are given by Amphenol Corp. The furnishing of these drawings, specifications, or other data by Amphenol Corp., or to any other person to anyone for any purpose is not to be regarded by implication or otherwise in any manner licensing, granting rights or permitting such holder or any other person to manufacture, use or sell any product, process or design, patented or otherwise, that may in any way be related to or disclosed by said drawings, specifications, or other data.

MATERIAL	DRAWN	DATE	TITLE MCX DIRECT SOLDER PLUG (FOR .085", .086")		Amphenol RF Danbury CT USA, Tainan Taiwan, Shenzhen China www.amphenolrf.com	
	ROSE	12-Apr-11'				
REFERENCE	ENGINEER	DATE	SCALE: 6/1		SHEET 2 OF 2	
	JOHNSON	05-31-00'				
FINISH	APPROVED	DATE	DWG SIZE B		REV C	
	SCOTT	12-Apr-11'				
CAD FILE F:\DWG\MCX\1181A1\085-50\3GT30GSZ-C			PART NO.		919-120P-51SX	
			DRAWING NO.		MCX1181A1-3GT30G-.085-50	
			ITEM NO.		081181AAA45GE5F	