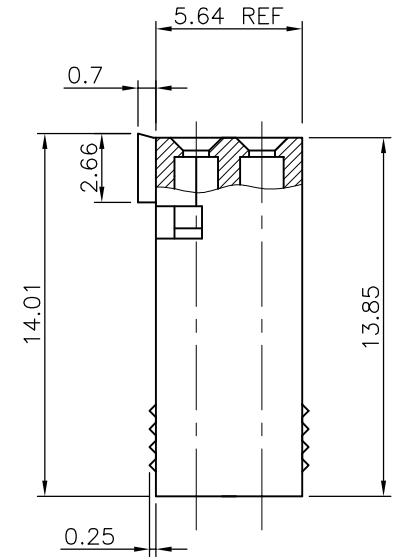
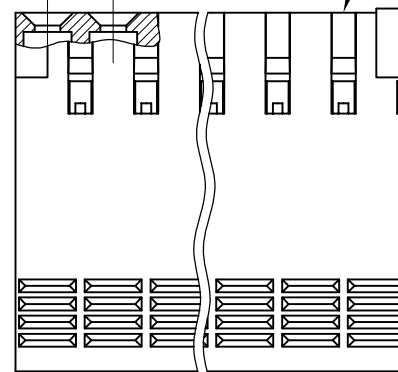
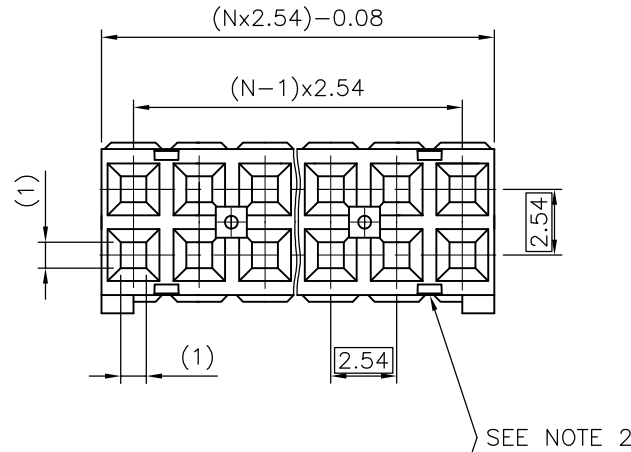


PRODUCT NUMBER

65239-YXXLF

- WHEN NEEDED, SUFFIX LETTER "LF" INDICATES THE PRODUCT IS RoHS COMPLIANT, SEE NOTE 6
- NUMBER OF CAVITIES PER ROW : 02 TO 36.
- PLASTIC MATERIAL COLOR CODE.
- 0 = BLUE
- 1 = GREY



NOTES:

- 1 - HOUSING MAT'L: THERMOPLASTIC GLASS FILLED FLAME RETARDANT PER UL 94 V-0.
- 2 - OVER DASH -007 ONLY FIRST AND LAST THREE POSITIONS MUST HAVE GROOVES ON TWO SIDES.
- 3 - PRODUCT PACKED IN PLASTIC BAG.
- 4 - TO DETERMINE DIMENSIONS:
N = NUMBER OF POSITIONS
EXAMPLE: 8 POS: (N x 2.54) - 0.08 = 20.24 mm.
- 5 - FOR TECHNICAL APPLICATION SEE TA317.
- 6 - RoHS COMPATIBLE PRODUCT SPECIFICATIONS

- a - LABELING:
- MEETS PACKAGING SPECS AS PER GS-14-920
- b - LEGAL STATEMENT: SEE GS-22-008

THE PRODUCT IS NOT INTENDED TO BE EXPOSED TO A MANUFACTURING SOLDER PROCESS.

| | | | | | | | | | |
|-------------|----------|----------|----------|---------------------------------------|------------|------------|--------------|----------------|------------------|
| mat'l. code | | surface | | tolerance | | projection | | product family | |
| SEE NOTE | | ISO 1302 | | ISO 406 | | ISO 101 | | DUBOX | |
| ltr | ecn no | dr | date | tolerances unless otherwise specified | | mm | | title | |
| M | F05-0236 | DLE | 05.08.24 | angles | linear | ±0.3 | | CtW HOUSING | |
| N | F05-0286 | DLE | 05.11.07 | ±2' | | scale 5:1 | | DR | |
| P | F06-0146 | DLE | 06.03.10 | | | | | dwg no | |
| R | F06-0225 | DLE | 06.07.07 | dr | L.MULIN | 00.08.30 | sheet 1 of 1 | | size |
| | | | | engr | P.NIZZI | 00.08.30 | 65239 | | A3 |
| K | F04-0347 | DLE | 04.12.10 | chr | JF.NOTTEAU | 00.08.30 | type | | CUSTOMER Drawing |
| L | F05-0169 | DLE | 05.04.07 | appd | P.NZ | 00.08.30 | | | |
| sheet | revision | | | | | | | | |
| index | sheet | | | | | | | | |

Copyright FCI
 FCconnect.com