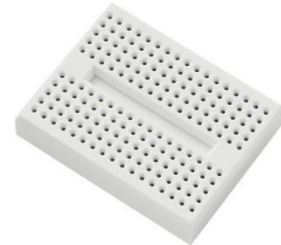


## Data Sheet

---

# Breadboards

## Multi-Use Breadboards



### Product Highlights

- Ideal for Prototyping and Educational Projects
- Includes adhesive backing

### Specifications

- Spacing: 2.54 mm x 2.54 mm
- Power Rails: Dual
- Works great with: 20-26 AWG Jumper Wires  
20-26 AWG solid gauge Hook up wires  
2.54 mm spaced Headers

Part Number	Physical Size	Total Rows	Total Columns	Total Number of Pins
EB01	45.7mm x 34.6mm	17	10	170