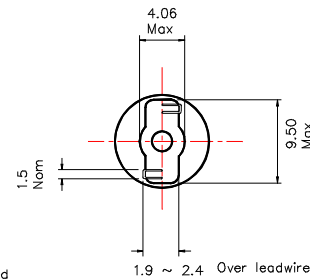
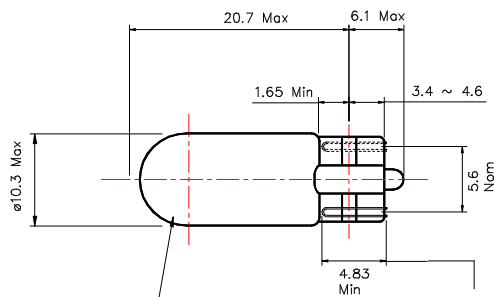
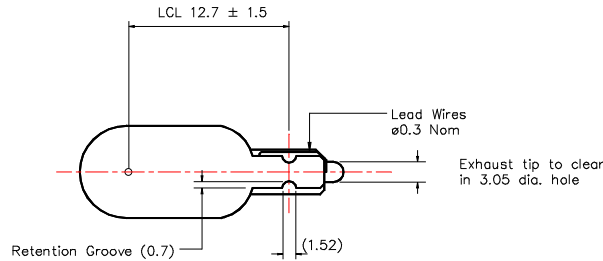


Part Number: 1112

Type	Size	Rating	Description
Incandescent	T10	12V 100mA	T-3¼ Wedge Base Lamp



Clear glass properly annealed, shall be uniform in shape and substantially free of prismatic action.

Lead wires to extend past retention groove but not beyond flat section of wedge

Dimensions in millimetres

TEST VOLTS	CURRENT (mA)			LIGHT OUTPUT (Lm)			LIFE Hours
	Min.	Nom.	Max.	Min.	Nom.	Max.	
12	90	100	110	3.80	5.00	6.25	5,000

Notes:

- 1 **Filament Shape** C-2V
- 2 **Base Type** W2.1x9.5d
- 3 **Lamp Marking** VCH 1112 12V 0.1A
- 4 **Bead colour** White or clear
- 5 **Environmental** RoHS & REACH SVHC compliant