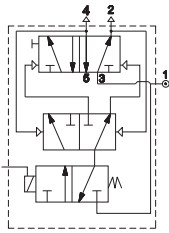


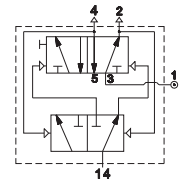
Binary Counter (Flip Flop)

■ **AP-500**
Electrical override



Working pressure: 10 bar
Energizing pressure: 1,5 bar
Ambient temperature: -30 ÷ +80 °C
Coil: U1 - DA series

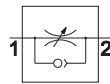
■ **AP-520**
Pneumatic override



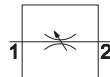
Solenoid valves are supplied without coil/connector/locking nut

Flow control valve - metallic body

■ **AM-50**
One-way and two-way flow control valve
M5 - G1/8 - G1/4 - G3/8 - G1/2



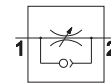
One-way regulation



Two-way regulation

		Ø mm
AM-5060	M5	1
AM-5061	G1/8	1
AM-5062	G1/8	2,25
AM-5063	G1/8	3,5
AM-5064	G1/4	5
AM-5065	G1/4	6
AM-5066	G3/8	6
AM-5067	G1/2	9
AM-5070	M5	1
AM-5071	G1/8	1
AM-5072	G1/8	2,25
AM-5074	G1/4	5
AM-5076	G3/8	6
AM-5077	G1/2	9

■ **AM-50**
One-way flow control valve G1/2 - G3/4 - G1

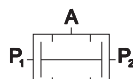


One-way regulation

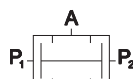
		Ø mm
AM-5090	G1/2	9
AM-5091	G3/4	9
AM-5092	G1	12

Signal processing valve

■ **AM-51**
Two-pressure valve "AND"

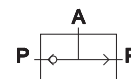


AM-5160
threaded body G1/8

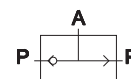


AM-5161
push-in fittings Ø4x2

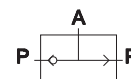
■ **AM-51**
Selector valve "OR"



AM-5162
threaded body G1/8




AM-5163
push-in fittings Ø4x2



AM-5164
threaded body G1/4

Gradual starter

AM-52
Gradual starter G1/8 ÷ G1




With manual regulation

Model	Connection	Ø mm
AM-5240	G1/8	6,5
AM-5241	G1/4	6,5
AM-5242	G1/4	9,5
AM-5243	G3/8	9,5

With electrical switch

Model	Connection	Ø mm
AM-5242E	G1/8	9,5
AM-5243E	G3/8	9,5



With manual regulation


Model	Connection	Ø mm
AM-5254	G1/2	15
AM-5255	G3/4	15
AM-5256	G 1	24

With electrical switch

Model	Connection	Ø mm
AM-5259	G1/2	15
AM-5260	G3/4	15
AM-5261	G 1	24

Economizer

AM-53
Economizer G1/8 ÷ G1




Ø mm

AM-5350	G1/8	6,5
AM-5351	G1/4	6,5
AM-5352	G1/4	9,5
AM-5353	G3/8	9,5
AM-5354	G1/2	15
AM-5355	G3/4	15
AM-5356	G 1	24

Check valve

AM-54
Check valve G1/2 - G3/4 - G1




Ø mm

AM-5400	G1/2	15
AM-5401	G3/4	15
AM-5402	G 1	24


Blocking valve

AM-55
Blocking valve



One-way

Model	Connection	Ø mm
AM-5500	G1/8	6,5
AM-5501	G1/4	6,5
AM-5502	G1/4	9,5
AM-5503	G3/8	9,5
AM-5504	G1/2	15




Two-way

Model	Connection	Ø mm
AM-5510	G1/8	6,5
AM-5511	G1/4	6,5
AM-5512	G1/4	9,5
AM-5513	G3/8	9,5
AM-5514	G1/2	15


Transducer and pressure switch

AM-5200
Pneumo-electrical transducer



AM-5200

AM-5220
Adjustable pressure switch



AM-5220

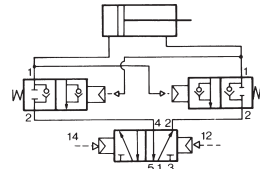
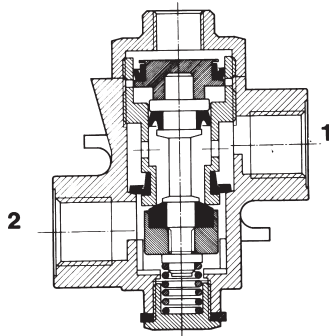


Unidirectional blocking valves are safety devices which can block the cylinder rod when, accidentally, the pressure fails. Bidirectional blocking valves are used to block the cylinder rod when the bistable 5/2 valve that controls it has deenergized pilots. In this case the 5/3 function is obtained.

Max. working pressure: 10 bar
 Ambient and fluid temperature: -20 ÷ +180 °C
 Fluid temperature: 50°C max.

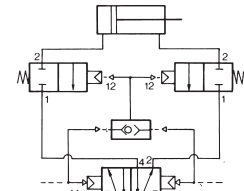
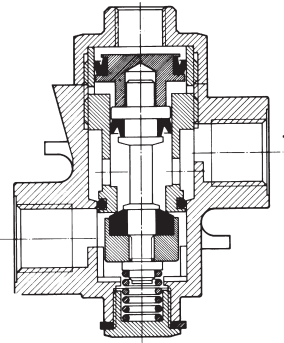
Body: die-cast zamak
 Oil proof seals
 Fluid: filtered air with or without lubrication

Unidirectional blocking valve



Functioning: the valve in rest position allows the air flow from 2 to 1; air flows from 1 to 2 only when it receives the control signal.
Use: when mounted on the cylinder (opening 1 connected to the cylinder) the valve blocks the cylinder when pressure accidentally fails.

Bidirectional blocking valve

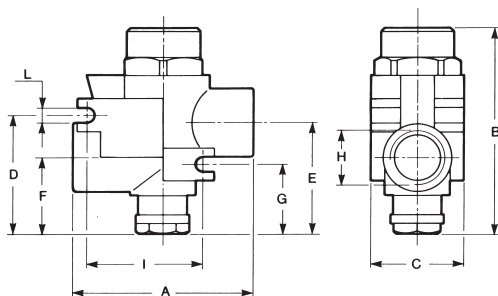


Functioning: the valve allows the air flow from 2 to 1 (or from 1 to 2) only when it receives the control signal.
Use: when mounted on the cylinder openings it allows the 3 position operation (closed centres) although a 5/2 valve controls the cylinder. This is reached by connecting the opening 2 to the cylinder, the opening 1 to the 5/2 valve and controlling the two valves at the same time through an OR. The OR inputs must be connected to the control impulses of the 5/2 valve.

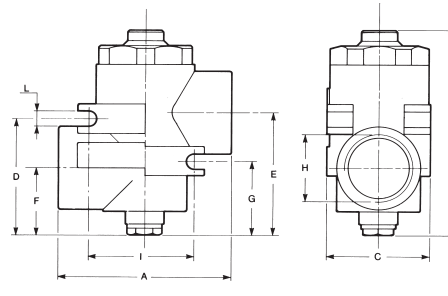
Type	Symbol	Function	Ports	Capacity NI/min	Ø mm	Pressure bar	Mass kg	Part number
		unidirectional	G 1/8	620	6,5	1,5 ÷ 10	0,110	AM-5500
			G 1/4	620	6,5		0,110	AM-5501
			G 1/4	2100	9,5		0,110	AM-5502
			G 3/8	2100	9,5		0,150	AM-5503
			G 1/2	3500	15		0,360	AM-5504
		bidirectional	G 1/8	620	6,5	1,5 ÷ 10	0,110	AM-5510
			G 1/4	620	6,5		0,110	AM-5511
			G 1/4	2100	9,5		0,110	AM-5512
			G 3/8	2100	9,5		0,150	AM-5513
			G 1/2	3500	15		0,360	AM-5514

Overall dimensions

Blocking valves with G 1/8 - G 1/4 ports



Blocking valves with G 1/4 - G 1/8 - G 1/2 ports



A	B	C	D	E	F	G	H	I	L
46	58	24	31	29	20	18,5	G 1/8	31	4,25
							G 1/4		
50	65	28	35	38	21	24,5	G 1/4	37	5,25
							G 3/8		
67	81	40	46	48	27	28,5	G 1/2	42	6,25