

## Products

SP60 series | Illuminated double-pole switch dependent light 16A quick connection 6.3 black body



sample image

PRODUCT CODE: SP6018C1G0000

Wiring diagrams



Terminal type



### accessories

Body colour



Actuator colour



Marking



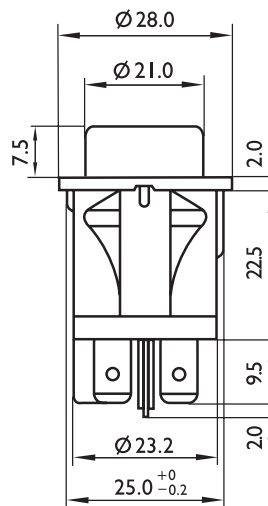
Rating

16 (6) A / 250 VAC  
10 (4) A / 400 VAC  
10 (4) A / 250 VAC - 5E4  
T120/55 °C

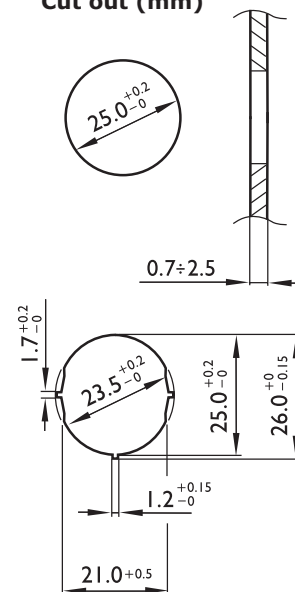
Approvals



Dimensions (mm)



Cut out (mm)



Termination

