

reducing sleeve

With cooling canal along the location hole

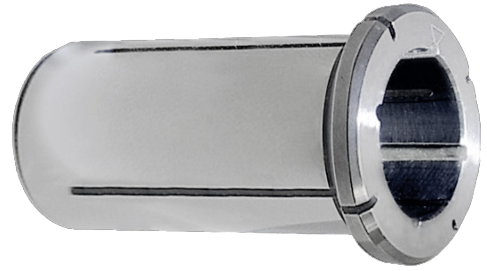
ATORN[®]

Application

For reducing the clamping diameter. For drilling, reaming, milling and tool sharpening.

Version

- Slotted and polished
- Concentricity tolerance $\leq 3\mu\text{m}$
- Concentricity tolerance $\leq 3\mu\text{m}$



Art. No.	23336 627
Chuck clamping diameter	32 mm
Clamping diameter	20 mm
Collar diameter	36 mm
Insertion depth	50 mm
Max. insert depth	60 mm
Length	64 mm
Coolant supply	KKB

EAN-Code

4050293436907