

## grinding and control vices, type PLF

Operated with hexagon socket key

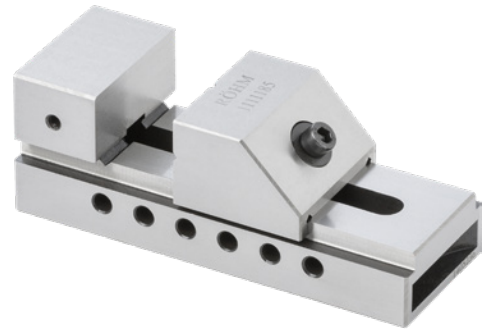


### Application:

For horizontal, vertical and lateral grinding, inspection and eroding tasks.

### Execution:

- Made of alloyed tool steel.
- Hardened and precision-ground.
- With pull-down effect.
- Horizontally and vertically ground vee block.
- Quick adjustment.
- Perpendicularity tolerance 0.005 mm/100 mm (base area to fixed jaw clamping surfaces).
- Ref. no. 010-030, parallelism tolerance 0.005 mm/100 mm (base surface to upper guide plate).



|  |                                  |
|--|----------------------------------|
| <b>Art. no.</b>                                      | <b>28600 010</b>                 |
| <b>Brand</b>   | RÖHM                             |
| <b>Manufacturer Part Number</b>                      | 1111185                          |
| <b>Model</b>   | Type PLF with top clamping screw |
| <b>Prism countersunk horizontally and vertically</b> | Yes                              |
| <b>Jaws width</b>                                    | 50 mm                            |
| <b>Jaws height</b>                                   | 25 mm                            |
| <b>Height 2</b>                                      | 25 mm                            |
| <b>Clamping width</b>                                | 65 mm                            |
| <b>Height</b>  | 50 mm                            |
| <b>Body length</b>                                   | 140 mm                           |
| <b>Gross Weight</b>                                  | 1.526 kg                         |
| <b>Product Group</b>                                 | 202                              |

### EAN

4019208208350