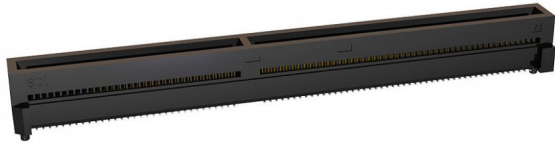
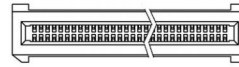


Product Data Sheet

EC.8 straight 160p,
Part No. 408-52160-100-12



160 Pins



mit Kodierung / with key

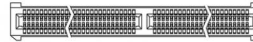


Illustration similar



Perpendicular



SMT



Direct Connector



High Density



High Speed

- 160 pins
- with key
- for 1.60 mm edge card thickness
- 0.8 mm pitch
- data transfer rate 28 Gbps
- Tray packaging



» to product on www.ept.de



» to product group EC.8 - 0.8 mm Edge Card

Product Data Sheet

EC.8 straight 160p,
Part No. 408-52160-100-12



Technical Specifications

Basics

| | |
|-----------------------------|-----------------|
| No. of Contacts | 160 |
| Termination Technology | SMT |
| Operating Temperature Range | -40°C to +125°C |

Material

| | |
|-------------------------------|----------------------|
| Insulator Material | LCP, UL 94 V-0 |
| CTI value <i>IEC 60112</i> | 200 |
| Contact Material | Copper alloy |
| Plating | Au over PdNi over Ni |
| Termination area | Sn over Ni |

Mechanical

| | |
|---|-------------------|
| Pitch | 0.8 mm |
| Mating Force per Pin | ≤ 0.635 N |
| Separating Force per Pin | ≥ 0.06 N |
| Durability <i>IEC 60512-9-1</i> | 500 mating cycles |
| Coplanarity | ≤ 0.1 mm |
| Vibration, sinusoidal <i>IEC 60512-6-4</i> | 10 - 2000 Hz, 20g |
| Contact mating problems if vibrations occur, sinusoidal <i>IEC 60512-2-5</i> | ≤ 1 μ s |
| Shock, semi-sinusoidal <i>IEC 60512-6-3</i> | 50g, 11 ms |
| Contact mating problems if shock occur, semi-sinusoidal <i>IEC 60512-2-5</i> | ≤ 1 μ s |

Electrical

| | |
|---|--|
| Operational Current <i>IEC 60512-5-2</i> | 1.35 A at 20°C (140 of 140 pins) 3.20 A at 20°C (8 of 140 pins) |
| Contact Resistance <i>IEC 60512-2-1</i> | ≤ 15 m Ω |
| Clearance and Creepage | 0.25 mm |
| Insulation Resistance <i>IEC 60512-3-1</i> | ≥ 1 G Ω |
| Test Voltage <i>IEC 60512-4-1</i> | 1100 VDC |
| Data Transfer Rate | 28 Gbps |

Product Data Sheet

EC.8 straight 160p,
Part No. 408-52160-100-12



Technical Specifications

Processing

Soldering Temperature 20 - 40 s at 260°C
JEDEC J-STD-020E

MSL 1
JEDEC J-STD-020E

Assembly Pick and Place

Approval / Compliance

UL file E130314

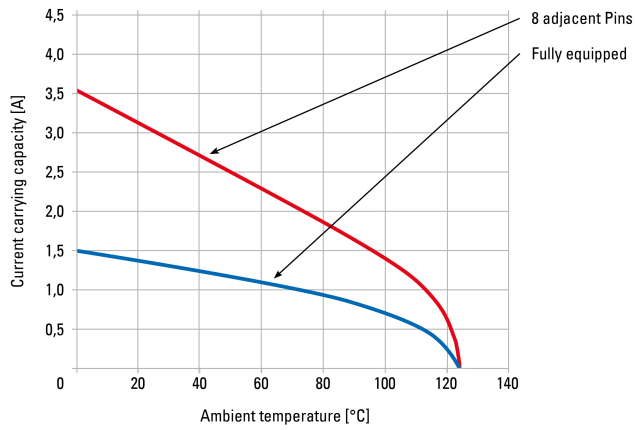
Environment RoHS compliant

Product Data Sheet

EC.8 straight 160p,
Part No. 408-52160-100-12



Derating Diagram



Product Data Sheet

EC.8 straight 160p,
Part No. 408-52160-100-12



Modifications

Available on request

- Tape & Reel Packaging

Drawings

Component data in 2D and 3D format you can download here:

[» PDF](#)

[» 3D IGES](#)

[» 3D STEP](#)

[» 3D PDF](#)