

VIBRATION-DAMPING BODY

Natural rubber NR, black colour.

- **DVC:** hardness 40, 55, 70 Shore A ±5.
- **DVC-SST:** hardness 55 Shore A ±5.

STANDARD EXECUTIONS

- **DVC.1:** zinc-plated steel plates and threaded studs.
- **DVC.1-SST:** AISI 304 stainless steel plates and threaded studs.
- **DVC.2:** zinc-plated steel plates, threaded stud and boss, threaded blind hole.
- **DVC.2-SST:** AISI 304 stainless steel plates, threaded stud and boss, threaded blind hole.
- **DVC.3:** zinc-plated steel plates and bosses, threaded blind holes.
- **DVC.3-SST:** AISI 304 stainless steel plates and bosses, threaded blind holes.

FEATURES AND APPLICATIONS

DVC. vibration-damping elements have been designed to damp vibrations, shocks and noises produced by moving bodies or non-balanced vibrating masses of equipment and machines.

Unlike DVA vibration-damping elements, under pressure these articles allow more lateral movement without leaving the vertical plane of the metal insert.

Vibrations can cause:

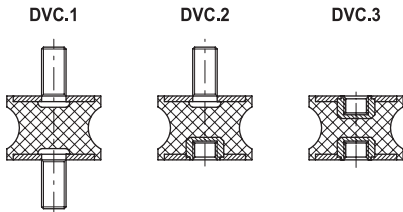
- malfunctioning and reduction of the machine lifespan and/or of the adjacent ones;
- damage to operator's health;
- noise.

Load diagrams for each single code are available on request.

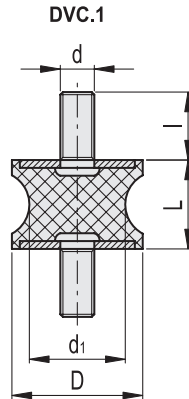
See Technical data and guidelines for the choice (on page 1014).

SPECIAL EXECUTIONS ON REQUEST

Natural rubber NR, hardness 40, 70 Shore A ±5, for executions with AISI 304 stainless steel base.



- 1
- 2
- 3
- 4
- 5
- 6
- 7
- 8
- 9
- 10
- 11
- 12
- 13
- 14
- 15
- 16
- 17
- 18

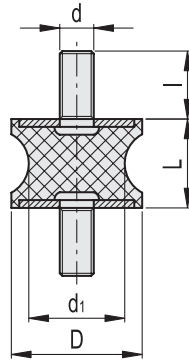


* Complete the description with the desired hardness:
40, 55 or 70 tolerance ± 5 Shore A.

DVC.1 - 10 - 4.5 - 8 - M4 - 10 - 55
 D d₁ L d l Shore A

Description	D	L	d	d ₁	l	⚖	Hardness 40 Shore A			Hardness 55 Shore A			Hardness 70 Shore A					
							Code	Max load [N]	Max. deflection [mm]	Stiffness [N/mm]	Code	Max load [N]	Max. deflection [mm]	Stiffness [N/mm]	Code	Max load [N]	Max. deflection [mm]	Stiffness [N/mm]
DVC.1-10-4.5-8-M4-10-*	10	8	M4	4.5	10	5	433201	43	2	22	433001	80	2	40	433401	105	2	53
DVC.1-10-8-10-M4-10-*	10	10	M4	8	10	8	433206	37	2.5	15	433006	69	2.5	28	433406	98	2.5	39
DVC.1-15-8.5-15-M4-10-*	15	15	M4	8.5	10	12	433211	113	3.75	30	433011	154	3.75	41	433411	207	3.75	55
DVC.1-15-12-15-M4-10-*	15	15	M4	12	10	14	433216	121	3.75	32	433016	163	3.75	43	433416	221	3.75	59
DVC.1-20-14-15-M6-18-*	20	15	M6	14	18	18	433231	211	3.75	56	433031	273	3.75	73	433431	325	3.75	87
DVC.1-20-14-19-M6-18-*	20	19	M6	14	18	25	433233	193	4.75	41	433033	238	4.75	50	433433	302	4.75	64
DVC.1-20-14-20-M6-18-*	20	20	M6	14	18	26	433235	191	5	38	433035	231	5	46	433435	300	5	60
DVC.1-21-16-22-M6-18-*	21	22	M6	16	18	28	433241	205	5.5	37	433041	268	5.5	49	433441	315	5.5	57
DVC.1-20-12-30-M6-18-*	20	30	M6	12	18	30	433221	175	7.5	23	433021	200	7.5	27	433421	480	7.5	64
DVC.1-20-14-30-M6-18-*	20	30	M6	14	18	32	433237	475	7.5	63	433037	202	7.5	27	433437	301	7.5	40
DVC.1-25-18-20-M6-18-*	25	20	M6	18	18	31	433251	539	5	108	433051	887	5	177	433451	1332	5	266
DVC.1-25-20-20-M6-18-*	25	20	M6	20	18	33	433256	560	5	112	433056	902	5	180	433456	1380	5	276
DVC.1-30-22-20-M8-20-*	30	20	M8	22	20	45	433266	738	5	148	433066	1087	5	217	433466	2005	5	401
DVC.1-30-18-25-M8-20-*	30	25	M8	18	20	50	433261	436	6.25	70	433061	671	6.25	107	433461	1342	6.25	215
DVC.1-35-31-15-M8-20-*	35	15	M8	31	20	46	433276	1120	3.75	299	433076	2097	3.75	559	433476	3215	3.75	857
DVC.1-35-25-34-M8-20-*	35	34	M8	25	20	56	433271	1073	8.5	126	433071	1564	8.5	184	433471	2415	8.5	284
DVC.1-40-30-25-M8-23-*	40	25	M8	30	23	58	433285	1823	6.25	292	433085	2430	6.25	389	433485	3378	6.25	540
DVC.1-40-25-30-M8-23-*	40	30	M8	25	23	64	433283	937	7.5	125	433083	1621	7.5	216	433483	2246	7.5	299
DVC.1-40-33-30-M8-23-*	40	30	M8	33	23	68	433289	1007	7.5	134	433089	1873	7.5	250	433489	2423	7.5	323
DVC.1-40-20-48-M8-23-*	40	48	M8	20	23	76	433281	498	12	42	433081	705	12	59	433481	1123	12	94
DVC.1-40-32-50-M8-23-*	40	50	M8	32	23	82	433287	521	12.5	42	433087	795	12.5	64	433487	1321	12.5	106
DVC.1-50-46-15-M10-28-*	50	15	M10	46	28	94	433296	1027	3.75	274	433096	2430	3.75	648	433496	3385	3.75	903
DVC.1-50-42-30-M10-28-*	50	30	M10	42	28	184	433291	1095	7.5	146	433091	1523	7.5	203	433491	2271	7.5	303
DVC.1-55-44-45-M10-28-*	55	45	M10	44	28	233	433293	911	11.25	81	433093	1328	11.25	118	433493	1974	11.25	175
DVC.1-57-25-45-M10-28-*	57	45	M10	25	28	242	433301	902	11.25	80	433101	1222	11.25	109	433501	1765	11.25	157
DVC.1-60-49-60-M10-28-*	60	60	M10	49	28	264	433306	2188	15	146	433106	3785	15	252	433506	4325	15	288
DVC.1-70-45-53-M12-37-*	70	53	M12	45	37	280	433311	1897	13.25	143	433111	2114	13.25	160	433511	3228	13.25	244
DVC.1-72-64-33.5-M12-37-*	72	33.5	M12	64	37	297	433316	2875	8.38	343	433116	4170	8.38	498	433516	7315	8.38	873
DVC.1-75-60-40-M12-37-*	75	40	M12	60	37	380	433321	2409	10	241	433121	3610	10	361	433521	6988	10	699
DVC.1-95-80-75-M16-41-*	95	75	M16	80	41	1090	433326	7584	18.75	404	433126	10865	18.75	579	433526	13263	18.75	707

DVC.1-SST



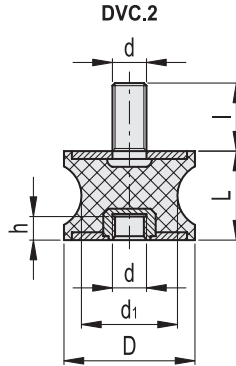
DVC.1 - 10 - 4.5 - 8 - SST - M4 - 10 - 55
 D d1 L Stainless steel d I Shore A

INOX STAINLESS STEEL

Description	D	L	d	d1	I	⚖	Hardness 40 Shore A			Hardness 55 Shore A			Hardness 70 Shore A					
							Code	Max load [N]	Max. deflection [mm]	Stiffness [N/mm]	Code	Max load [N]	Max. deflection [mm]	Stiffness [N/mm]	Code	Max load [N]	Max. deflection [mm]	Stiffness [N/mm]
DVC.1-10-4,5-8-SST-M4-10-55	10	8	M4	4,5	10	5		43	2	22	433601	80	2	40		105	2	53
DVC.1-10-8-10-SST-M4-10-55	10	10	M4	8	10	8		37	2.5	15	433606	69	2.5	28		98	2.5	39
DVC.1-15-8,5-15-SST-M4-10-55	15	15	M4	8,5	10	12		113	3.75	30	433611	154	3.75	41		207	3.75	55
DVC.1-15-12-15-SST-M4-10-55	15	15	M4	12	10	14		121	3.75	32	433616	163	3.75	43		221	3.75	59
DVC.1-20-14-15-SST-M6-18-55	20	15	M6	14	18	18		211	3.75	56	433631	273	3.75	73		325	3.75	87
DVC.1-20-14-19-SST-M6-18-55	20	19	M6	14	18	25		193	4.75	41	433633	238	4.75	50		302	4.75	64
DVC.1-20-14-20-SST-M6-18-55	20	20	M6	14	18	26		191	5	38	433635	231	5	46		300	5	60
DVC.1-21-16-22-SST-M6-18-55	21	22	M6	16	18	28		205	5.5	37	433641	268	5.5	49		315	5.5	57
DVC.1-20-12-30-SST-M6-18-55	20	30	M6	12	18	30		126	7.5	17	433621	194	7.5	26		217	7.5	29
DVC.1-20-14-30-SST-M6-18-55	20	30	M6	14	18	32		475	7.5	63	433637	202	7.5	27		301	7.5	40
DVC.1-25-18-20-SST-M6-18-55	25	20	M6	18	18	31		539	5	108	433651	887	5	177		1332	5	266
DVC.1-25-20-20-SST-M6-18-55	25	20	M6	20	18	33		560	5	112	433656	902	5	180		1380	5	276
DVC.1-30-22-20-SST-M8-20-55	30	20	M8	22	20	45		738	5	148	433666	1087	5	217		2005	5	401
DVC.1-30-18-25-SST-M8-20-55	30	25	M8	18	20	50	ON REQUEST	436	6.25	70	433661	671	6.25	107	ON REQUEST	1342	6.25	215
DVC.1-35-31-15-SST-M8-20-55	35	15	M8	31	20	46		1120	3.75	299	433676	2097	3.75	559		3215	3.75	857
DVC.1-35-25-34-SST-M8-20-55	35	34	M8	25	20	56		1073	8.5	126	433671	1564	8.5	184		2415	8.5	284
DVC.1-40-30-25-SST-M8-23-55	40	25	M8	30	23	58		1823	6.25	292	433685	2430	6.25	389		3378	6.25	540
DVC.1-40-25-30-SST-M8-23-55	40	30	M8	25	23	64		937	7.5	125	433683	1621	7.5	216		2246	7.5	299
DVC.1-40-33-30-SST-M8-23-55	40	30	M8	33	23	68		1007	7.5	134	433689	1873	7.5	250		2423	7.5	323
DVC.1-40-20-48-SST-M8-23-55	40	48	M8	20	23	76		498	12	42	433681	705	12	59		1123	12	94
DVC.1-40-32-50-SST-M8-23-55	40	50	M8	32	23	82		521	12.5	42	433687	795	12.5	64		1321	12.5	106
DVC.1-50-46-15-SST-M10-28-55	50	15	M10	46	28	94		1027	3.75	274	433696	2430	3.75	648		3385	3.75	903
DVC.1-50-42-30-SST-M10-28-55	50	30	M10	42	28	184		1095	7.5	146	433691	1523	7.5	203		2271	7.5	303
DVC.1-55-44-45-SST-M10-28-55	55	45	M10	44	28	233		911	11.25	81	433693	1328	11.25	118		1974	11.25	175
DVC.1-57-25-45-SST-M10-28-55	57	45	M10	25	28	242		902	11.25	80	433701	1222	11.25	109		1765	11.25	157
DVC.1-60-49-60-SST-M10-28-55	60	60	M10	49	28	264		2188	15	146	433706	3785	15	252		4325	15	288
DVC.1-70-45-53-SST-M12-37-55	70	53	M12	45	37	280		1897	13.25	143	433711	2114	13.25	160		3228	13.25	244
DVC.1-72-64-33,5-SST-M12-37-55	72	33,5	M12	64	37	297		2875	8.38	343	433716	4170	8.38	498		7315	8.38	873
DVC.1-75-60-40-SST-M12-37-55	75	40	M12	60	37	380		2409	10	241	433721	3610	10	361		6988	10	699
DVC.1-95-80-75-SST-M16-41-55	95	75	M16	80	41	1090		7584	18.75	404	433726	10865	18.75	579		13263	18.75	707



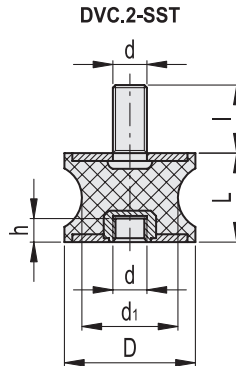
Vibration damping elements



* Complete the description with the desired hardness: 40, 55 or 70 tolerance ± 5 Shore A.



Description	D	L	d	d1	l	h	△	Hardness 40 Shore A			Hardness 55 Shore A			Hardness 70 Shore A					
								Code	Max load [N]	Max. deflection [mm]	Stiffness [N/mm]	Code	Max load [N]	Max. deflection [mm]	Stiffness [N/mm]	Code	Max load [N]	Max. deflection [mm]	Stiffness [N/mm]
DVC.2-10-8-10-M4-10-*	10	10	M4	8	10	4	3	433901	47	2.5	19	433751	88	2.5	35	434051	124	2.5	50
DVC.2-15-8,5-15-M4-10-*	15	15	M4	8,5	10	4	5	433911	81	3.75	22	433761	132	3.75	35	434061	180	3.75	48
DVC.2-15-12-15-M4-10-*	15	15	M4	12	10	4	6	433916	132	3.75	35	433766	142	3.75	38	434066	191	3.75	51
DVC.2-20-14-15-M6-18-*	20	15	M6	14	18	6	14	433923	278	3.75	74	433773	360	3.75	96	434073	429	3.75	114
DVC.2-20-14-19-M6-18-*	20	19	M6	14	18	6	16	433925	255	4.75	54	433775	314	4.75	66	434075	398	4.75	84
DVC.2-20-14-20-M6-18-*	20	20	M6	14	18	6	17	433927	252	5	50	433777	305	5	61	434077	396	5	79
DVC.2-21-16-22-M6-18-*	21	22	M6	16	18	6	18	433931	260	5.5	47	433781	340	5.5	62	434081	399	5.5	73
DVC.2-20-12-30-M6-18-*	20	30	M6	12	18	6	22	433921	174	7.5	23	433771	267	7.5	36	434071	299	7.5	40
DVC.2-20-14-30-M6-18-*	20	30	M6	14	18	6	25	433929	173	7.5	23	433779	255	7.5	34	434079	380	7.5	51
DVC.2-25-18-20-M6-18-*	25	20	M6	18	18	6	36	433941	593	5	119	433791	631	5	126	434091	1038	5	208
DVC.2-25-20-20-M6-18-*	25	20	M6	20	18	6	39	433946	695	5	139	433796	1119	5	224	434096	1713	5	343
DVC.2-30-22-20-M8-20-*	30	20	M8	22	20	8	44	433956	655	5	131	433806	863	5	173	434106	1272	5	254
DVC.2-30-18-25-M8-20-*	30	25	M8	18	20	8	49	433951	572	6.25	92	433801	881	6.25	141	434101	1762	6.25	282
DVC.2-35-31-15-M8-20-*	35	15	M8	31	20	8	46	433966	785	3.75	209	433816	1310	3.75	349	434116	2453	3.75	654
DVC.2-35-25-34-M8-20-*	35	34	M8	25	20	8	60	433961	1355	8.5	159	433811	1975	8.5	232	434111	3050	8.5	359
DVC.2-40-30-25-M8-23-*	40	25	M8	30	23	8	73	433975	2392	6.25	383	433825	3188	6.25	510	434125	4432	6.25	709
DVC.2-40-25-30-M8-23-*	40	30	M8	25	23	8	76	433973	1229	7.5	164	433823	2127	7.5	284	434123	2947	7.5	393
DVC.2-40-33-30-M8-23-*	40	30	M8	33	23	8	80	433979	861	7.5	115	433829	1178	7.5	157	434129	2191	7.5	292
DVC.2-40-20-48-M8-23-*	40	48	M8	20	23	8	86	433971	657	12	55	433821	931	12	78	434121	1482	12	124
DVC.2-40-32-50-M8-23-*	40	50	M8	32	23	8	94	433977	684	12.5	55	433827	1043	12.5	83	434127	1733	12.5	139
DVC.2-50-42-30-M10-28-*	50	30	M10	42	28	10	112	433981	1420	7.5	189	433831	1975	7.5	263	434131	2945	7.5	393
DVC.2-55-44-45-M10-28-*	55	45	M10	44	28	10	162	433986	1012	11.25	90	433836	1320	11.25	117	434136	2013	11.25	179
DVC.2-57-25-45-M10-28-*	57	45	M10	25	28	10	155	433991	1007	11.25	90	433841	1313	11.25	117	434141	1765	11.25	157
DVC.2-60-49-60-M10-28-*	60	60	M10	49	28	10	245	433996	1430	15	95	433846	2560	15	171	434146	4428	15	295
DVC.2-70-45-53-M12-37-*	70	53	M12	45	37	12	321	434001	1993	13.25	150	433851	2219	13.25	167	434151	2473	13.25	187
DVC.2-72-64-33,5-M12-37-*	72	33,5	M12	64	37	12	385	434006	3530	8.38	421	433856	3364	8.38	401	434156	7740	8.38	924
DVC.2-75-60-40-M12-37-*	75	40	M12	60	37	12	450	434011	2605	10	261	433861	3922	10	392	434161	7005	10	701
DVC.2-95-80-75-M16-41-*	95	75	M16	80	41	16	740	434016	7438	18.75	397	433866	1036	18.75	55	434166	13990	18.75	746



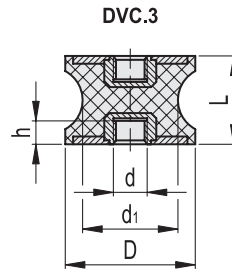
DVC.2 - 10 - 8 - 10 - SST - M4 - 10 - 55
 D d1 L Stainless steel d l Shore A

INOX STAINLESS STEEL

Description	D	L	d	d1	l	h	Δ	Hardness 40 Shore A			Hardness 55 Shore A			Hardness 70 Shore A					
								Code	Max load [N]	Max. deflection [mm]	Stiffness [N/mm]	Code	Max load [N]	Max. deflection [mm]	Stiffness [N/mm]	Code	Max load [N]	Max. deflection [mm]	Stiffness [N/mm]
DVC.2-10-8-10-SST-M4-10-55	10	10	M4	8	10	4	3		47	2.5	19	434201	88	2.5	35		124	2.5	50
DVC.2-15-8,5-15-SST-M4-10-55	15	15	M4	8,5	10	4	5		81	3.75	22	434211	132	3.75	35		180	3.75	48
DVC.2-15-12-15-SST-M4-10-55	15	15	M4	12	10	4	6		132	3.75	35	434216	142	3.75	38		191	3.75	51
DVC.2-20-14-15-SST-M6-18-55	20	15	M6	14	18	6	14		278	3.75	74	434223	360	3.75	96		429	3.75	114
DVC.2-20-14-19-SST-M6-18-55	20	19	M6	14	18	6	16		255	4.75	54	434225	314	4.75	66		398	4.75	84
DVC.2-20-14-20-SST-M6-18-55	20	20	M6	14	18	6	17		252	5	50	434227	305	5	61		396	5	79
DVC.2-21-16-22-SST-M6-18-55	21	22	M6	16	18	6	18		260	5.5	47	434231	340	5.5	62		399	5.5	73
DVC.2-20-12-30-SST-M6-18-55	20	30	M6	12	18	6	22		174	7.5	23	434221	267	7.5	36		299	7.5	40
DVC.2-20-14-30-SST-M6-18-55	20	30	M6	14	18	6	25		173	7.5	23	434229	255	7.5	34		380	7.5	51
DVC.2-25-18-20-SST-M6-18-55	25	20	M6	18	18	6	36		593	5	119	434241	631	5	126		1038	5	208
DVC.2-25-20-20-SST-M6-18-55	25	20	M6	20	18	6	39		695	5	139	434246	1119	5	224		1713	5	343
DVC.2-30-22-20-SST-M8-20-55	30	20	M8	22	20	8	44		655	5	131	434256	863	5	173		1272	5	254
DVC.2-30-18-25-SST-M8-20-55	30	25	M8	18	20	8	49	ON REQUEST	572	6.25	92	434251	881	6.25	141	ON REQUEST	1762	6.25	282
DVC.2-35-31-15-SST-M8-20-55	35	15	M8	31	20	8	46	ON REQUEST	785	3.75	209	434266	1310	3.75	349	ON REQUEST	2453	3.75	654
DVC.2-35-25-34-SST-M8-20-55	35	34	M8	25	20	8	60	ON REQUEST	1355	8.5	159	434261	1975	8.5	232	ON REQUEST	3050	8.5	359
DVC.2-40-30-25-SST-M8-23-55	40	25	M8	30	23	8	73	ON REQUEST	2392	6.25	383	434275	3188	6.25	510	ON REQUEST	4432	6.25	709
DVC.2-40-20-30-SST-M8-23-55	40	30	M8	25	23	8	76	ON REQUEST	1229	7.5	164	434273	2127	7.5	284	ON REQUEST	2947	7.5	393
DVC.2-40-33-30-SST-M8-23-55	40	30	M8	33	23	8	80		861	7.5	115	434279	1178	7.5	157		2191	7.5	292
DVC.2-40-20-48-SST-M8-23-55	40	48	M8	20	23	8	86		657	12	55	434271	931	12	78		1482	12	124
DVC.2-40-32-50-SST-M8-23-55	40	50	M8	32	23	8	94		684	12.5	55	434277	1043	12.5	83		1733	12.5	139
DVC.2-50-42-30-SST-M10-28-55	50	30	M10	42	28	10	112		1420	7.5	189	434281	1975	7.5	263		2945	7.5	393
DVC.2-55-44-45-SST-M10-28-55	55	45	M10	44	28	10	162		1012	11.25	90	434286	1320	11.25	117		2013	11.25	179
DVC.2-57-25-45-SST-M10-28-55	57	45	M10	25	28	10	155		1007	11.25	90	434291	1313	11.25	117		1765	11.25	157
DVC.2-60-49-60-SST-M10-28-55	60	60	M10	49	28	10	245		1430	15	95	434296	2560	15	171		4428	15	295
DVC.2-70-45-53-SST-M12-37-55	70	53	M12	45	37	12	321		1993	13.25	150	434301	2219	13.25	167		2473	13.25	187
DVC.2-72-64-33,5-SST-M12-37-55	72	33,5	M12	64	37	12	385		3530	8.38	421	434306	3364	8.38	401		7740	8.38	924
DVC.2-75-60-40-SST-M12-37-55	75	40	M12	60	37	12	450		2605	10	261	434311	3922	10	392		7005	10	701
DVC.2-95-80-75-SST-M16-41-55	95	75	M16	80	41	16	740		7438	18.75	397	434316	1036	18.75	55		13990	18.75	746



Vibration damping elements



* Complete the description with the desired hardness: 40, 55 or 70 tolerance ± 5 Shore A.

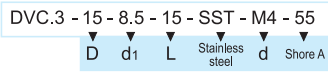
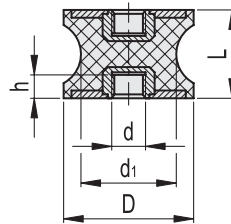


Description	D	L	d	d1	h	Code	Hardness 40 Shore A			Hardness 55 Shore A			Hardness 70 Shore A					
							Max. load [N]	Max. deflection [mm]	Stiffness [N/mm]	Code	Max. load [N]	Max. deflection [mm]	Stiffness [N/mm]	Code	Max. load [N]	Max. deflection [mm]	Stiffness [N/mm]	
DVC.3-15-8,5-15-M4-*	15	15	Mw4	8,5	4	6	434601	94	3.75	25	434501	155	3.75	41	434701	211	3.75	56
DVC.3-15-12-15-M4-*	15	15	M4	12	4	8	434606	155	3.75	41	434506	166	3.75	44	434706	223	3.75	59
DVC.3-20-14-15-M6-*	20	15	M6	14	6	13	434613	263	3.75	70	434513	289	3.75	77	434713	374	3.75	100
DVC.3-20-14-19-M6-*	20	19	M6	14	6	16	434615	250	4.75	53	434515	273	4.75	57	434715	326	4.75	69
DVC.3-20-14-20-M6-*	20	20	M6	14	6	17	434617	248	5	50	434517	261	5	52	434717	316	5	63
DVC.3-21-16-22-M6-*	21	22	M6	16	6	18	434621	260	5.5	47	434521	281	5.5	51	434721	367	5.5	67
DVC.3-20-12-30-M6-*	20	30	M6	12	6	19	434611	178	7.5	24	434511	261	7.5	35	434711	695	7.5	93
DVC.3-20-14-30-M6-*	20	30	M6	14	6	23	434619	383	7.5	51	434519	650	7.5	87	434719	277	7.5	37
DVC.3-25-18-20-M6-*	25	20	M6	18	6	27	434631	694	5	139	434531	738	5	148	434731	1214	5	243
DVC.3-25-20-20-M6-*	25	20	M6	20	6	30	434636	705	5	141	434536	767	5	153	434736	1235	5	247
DVC.3-30-22-20-M8-*	30	20	M8	22	8	39	434643	767	5	153	434543	1010	5	202	434743	1488	5	298
DVC.3-30-18-25-M8-*	30	25	M8	18	8	42	434641	479	6.25	77	434541	597	6.25	96	434741	919	6.25	147
DVC.3-35-25-34-M8-*	35	34	M8	25	8	53	434645	2871	8.5	338	434545	1469	8.5	173	434745	2141	8.5	252
DVC.3-40-30-25-M8-*	40	25	M8	30	8	64	434655	2520	6.25	403	434555	2890	6.25	462	434755	3326	6.25	532
DVC.3-40-25-30-M8-*	40	30	M8	25	8	72	434653	1310	7.5	175	434553	1550	7.5	207	434753	2219	7.5	296
DVC.3-40-33-30-M8-*	40	30	M8	33	8	80	434659	1350	7.5	180	434559	1768	7.5	236	434759	2564	7.5	342
DVC.3-40-32-50-M8-*	40	50	M8	32	8	98	434657	575	12.5	46	434557	682	12.5	55	434757	965	12.5	77
DVC.3-40-20-48-M8-*	40	48	M8	20	8	86	434651	607	12	51	434551	713	12	59	434751	1088	12	91
DVC.3-50-42-30-M10-*	50	30	M10	42	10	125	434656	3326	7.5	443	434556	1499	7.5	200	434756	2085	7.5	278
DVC.3-55-44-45-M10-*	55	45	M10	44	10	150	434661	1037	11.25	92	434561	1247	11.25	111	434761	1818	11.25	162
DVC.3-57-25-45-M10-*	57	45	M10	25	10	140	434666	923	11.25	82	434566	1235	11.25	110	434766	1673	11.25	149
DVC.3-60-49-60-M10-*	60	60	M10	49	10	310	434671	2327	15	155	434571	2995	15	200	434771	5181	15	345
DVC.3-70-45-53-M12-*	70	53	M12	45	12	346	434676	2023	13.25	153	434576	2597	13.25	196	434776	2894	13.25	218
DVC.3-72-64-33,5-M12-*	72	33,5	M12	64	12	342	434681	2970	8.38	354	434581	3936	8.38	470	434781	5708	8.38	681
DVC.3-75-60-40-M12-*	75	40	M12	60	12	360	434686	2611	10	261	434586	3298	10	330	434786	4942	10	494
DVC.3-95-80-75-M16-*	95	75	M16	80	16	690	434691	7977	18.75	425	434591	10382	18.75	554	434791	14873	18.75	793

Vibration damping elements



DVC.3-SST



INOX STAINLESS STEEL

Description	D	L	d	d1	h	△	Hardness 40 Shore A			Hardness 55 Shore A			Hardness 70 Shore A					
							Code	Max load [N]	Max. deflection [mm]	Stiffness [N/mm]	Code	Max load [N]	Max. deflection [mm]	Stiffness [N/mm]	Code	Max load [N]	Max. deflection [mm]	Stiffness [N/mm]
DVC.3-15-8,5-15-SST-M4-55	15	15	M4	8,5	4	6		94	3.75	25	434801	155	3.75	41		211	3.75	56
DVC.3-15-12-15-SST-M4-55	15	15	M4	12	4	8		155	3.75	41	434806	166	3.75	44		223	3.75	59
DVC.3-20-14-15-SST-M6-55	20	15	M6	14	6	13		263	3.75	70	434813	289	3.75	77		374	3.75	100
DVC.3-20-14-19-SST-M6-55	20	19	M6	14	6	16		250	4.75	53	434815	273	4.75	57		326	4.75	69
DVC.3-20-14-20-SST-M6-55	20	20	M6	14	6	17		248	5	50	434817	261	5	52		316	5	63
DVC.3-21-16-22-SST-M6-55	21	22	M6	16	6	18		260	5.5	47	434821	281	5.5	51		367	5.5	67
DVC.3-20-12-30-SST-M6-55	20	30	M6	12	6	19		281	7.5	37	434811	172	7.5	23		266	7.5	35
DVC.3-20-14-30-SST-M6-55	20	30	M6	14	6	23		383	7.5	51	434819	650	7.5	87		277	7.5	37
DVC.3-25-18-20-SST-M6-55	25	20	M6	18	6	27		694	5	139	434831	738	5	148		1214	5	243
DVC.3-25-20-20-SST-M6-55	25	20	M6	20	6	30		705	5	141	434836	767	5	153		1235	5	247
DVC.3-30-22-20-SST-M8-55	30	20	M8	22	8	39		767	5	153	434843	1010	5	202		1488	5	298
DVC.3-30-18-25-SST-M8-55	30	25	M8	18	8	42	ON REQUEST	479	6.25	77	434841	597	6.25	96	ON REQUEST	919	6.25	147
DVC.3-35-25-34-SST-M8-55	35	34	M8	25	8	53		2871	8.5	338	434845	1469	8.5	173		2141	8.5	252
DVC.3-40-30-25-SST-M8-55	40	25	M8	30	8	64		2520	6.25	403	434855	2890	6.25	462		3326	6.25	532
DVC.3-40-25-30-SST-M8-55	40	30	M8	25	8	72		1310	7.5	175	434853	1550	7.5	207		2219	7.5	296
DVC.3-40-33-30-SST-M8-55	40	30	M8	33	8	80		1350	7.5	180	434859	1768	7.5	236		2564	7.5	342
DVC.3-40-32-50-SST-M8-55	40	50	M8	32	8	98		575	12.5	46	434857	682	12.5	55		965	12.5	77
DVC.3-40-20-48-SST-M8-55	40	48	M8	20	8	86		607	12	51	434851	713	12	59		1088	12	91
DVC.3-50-42-30-SST-M10-55	50	30	M10	42	10	125		3326	7.5	443	434856	1499	7.5	200		2085	7.5	278
DVC.3-55-44-45-SST-M10-55	55	45	M10	44	10	150		1037	11.25	92	434861	1247	11.25	111		1818	11.25	162
DVC.3-57-25-45-SST-M10-55	57	45	M10	25	10	140		923	11.25	82	434866	1235	11.25	110		1673	11.25	149
DVC.3-60-49-60-SST-M10-55	60	60	M10	49	10	310		2327	15	155	434871	2995	15	200		5181	15	345
DVC.3-70-45-53-SST-M12-55	70	53	M12	45	12	336		2023	13.25	153	434876	2597	13.25	196		2894	13.25	218
DVC.3-72-64-33,5-SST-M12-55	72	33,5	M12	64	12	342		2970	8.38	354	434881	3936	8.38	470		5708	8.38	681
DVC.3-75-60-40-SST-M12-55	75	40	M12	60	12	360		2611	10	261	434886	3298	10	330		4942	10	494
DVC.3-95-80-75-SST-M16-55	95	75	M16	80	16	690		7977	18.75	425	434891	10382	18.75	554		14873	18.75	793