

Pins

22690.0132



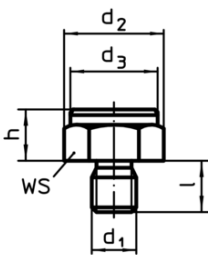
Product Description

To be used as seats, stops and thrust pads.

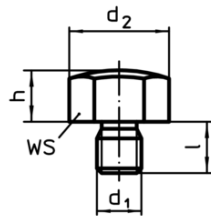
Material

- Steel, case-hardened, blackened

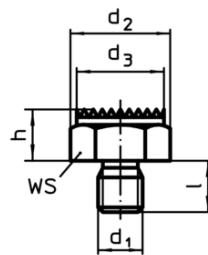
Drawing



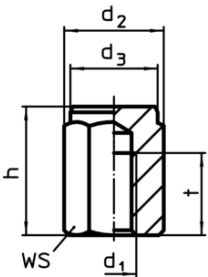
picture 1



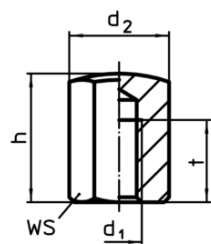
picture 2



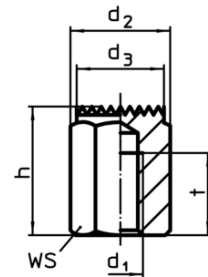
picture 3



picture 4




picture 5



picture 6

Order information

h ±0.1	Dimensions			l	WS [mm]	Tightening torque max. [Nm]	 [g]	Art. No.
	d ₁	d ₂	[mm]					
with male thread, bearing surface spherical – picture 2								
15	M10	21.9		12	19	32	40	22690.0132

Application example



Compliance

RoHS compliant

Contains lead - compliant according to exceptions 6a / 6b / 6c

Contains SVHC substances >0,1% w/w

Contains lead - SVHC list [REACH] as of 10.06.2022

Contains Proposition 65 substances



Lead can cause cancer and reproductive harm from exposure
<https://www.P65Warnings.ca.gov/>

Free from Conflict Minerals

This product does not contain any substances designated as "conflict minerals" such as tantalum, tin, gold or tungsten from the Democratic Republic of Congo or adjacent countries.