

Displayport to HDMI Cable

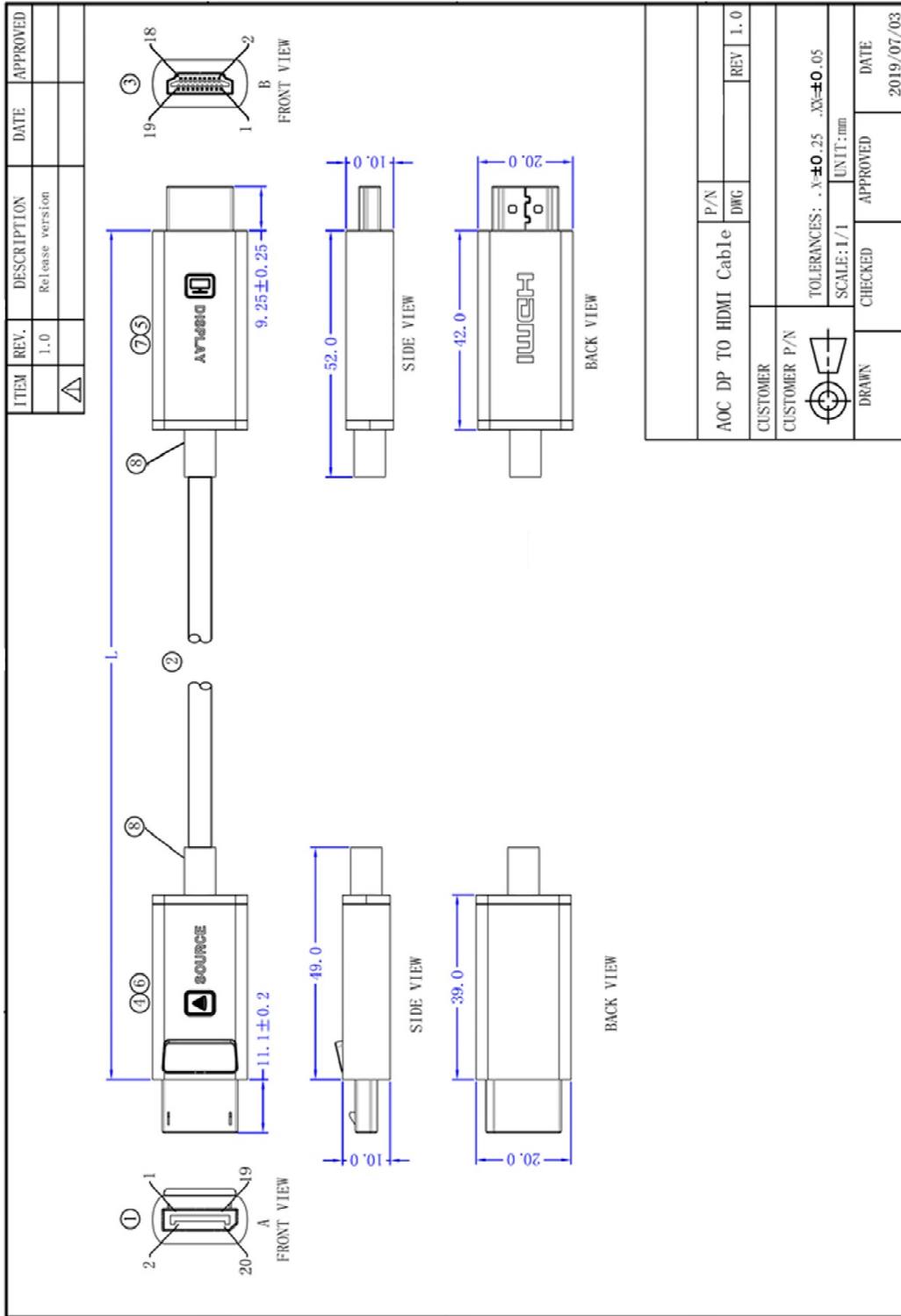


Features

- Display-port to HDMI Cable
- No loss of signal – delivering crystal clear digital images instantly
- Up to 50m Maximum Length
- Supports HDCP2.2
- Supports computer resolutions to 32Gbps and 4K/120HZ
- Wire: fibre (50/125um MMF)+7C copper wire OD:4.6- 4.8mm CL2 PVC Jacket
- 24k Gold plated connectors

Product Selector

Length	Part Number	Length	Part number
5M	HHOC-DPH5	25M	HHOC-DPH25
10M	HHOC-DPH10	30M	HHOC-DPH30
15M	HHOC-DPH15	35M	HHOC-DPH35
20M	HHOC-DPH20	40M	HHOC-DPH40
		50M	HHOC-DPH50



AOC DP TO HDMI Cable	P/N	DWG	REV	1.0
CUSTOMER				
CUSTOMER P/N	TOLERANCES: .X ± 0.25 .XX ± 0.05		UNIT: mm	
	DRAWN	CHECKED	APPROVED	DATE
				2019/07/03

ITEM	REV.	DESCRIPTION	DATE	APPROVED
△	1.0	发行版本		

At SOURCE	Signal Name	Signal Name	TYPE A PIN
1	ML-Lane0(p)	TMDS DATA2+	1
2	GND	TMDS DATA2 SHIELD	2
3	ML-Lane0(n)	TMDS DATA2-	3
4	ML-Lane1(p)	TMDS DATA1+	4
5	GND	TMDS DATA1 SHIELD	5
6	ML-Lane1(n)	TMDS DATA1-	6
7	ML-Lane2(p)	TMDS DATA0+	7
8	GND	TMDS DATA0 SHIELD	8
9	ML-Lane2(n)	TMDS DATA0-	9
10	ML-Lane3(p)	TMDS CLOCK+	10
11	GND	TMDS CLOCK SHIELD	11
12	ML-Lane3(n)	TMDS CLOCK-	12
13	CONFIG1	CEC	13
14	CONFIG2	UTILITY	14
15	AUX-CH(p)	SCL	15
16	GND	SDA	16
17	AUX-CH(n)	DDC/CEC GROUND	17
18	Hot Plug Detect	+5V POWER	18
19	Return DP-PWR	HOT PLUG DETECT	19
20	DP-PWR	SHELL	20

DP 1.4 PCBA (TX)		HDMI 2.0 PCBA (RX)	
⑧	SR, BLACK PVC 45P	5	G
⑦	HDMI METAL SHELL, "DISPLAY" LOGO	1	PCS
⑥	DP METAL SHELL, "SOURCE" LOGO	1	PCS
⑤	HDMI ABS she11	1	SET
④	DP ABS she11	1	SET
③	HDMI 2.0 PCBA RX	1	PCS
②	(50/125um FIBER*(IC-MID)*IC-(7/0.10Tx1P+D+AL)*IC-19/0.08T*3C-41/0.08Tx2C +F+P PVC JACKET, COLOR:BLACK 00:4.8±0.2mm	L	M
①	DP 1.4 PCBA TX	1	PCS
MOULD		Q' TY	UNIT

AOC DP TO HDMI Cable		P/N	REV
		DWG	1.0

CUSTOMER	CUSTOMER P/N	SCALE	UNIT
		1/1	mm

TOLERANCES:	APPROVED	DATE
.X=±0.25 .X3=±0.05		2019/07/03

DRAWN	CHECKED	APPROVED	DATE