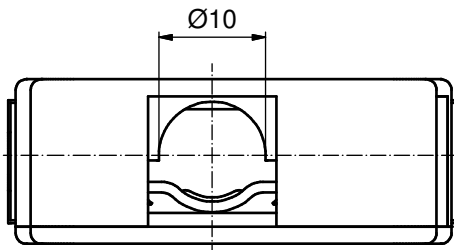
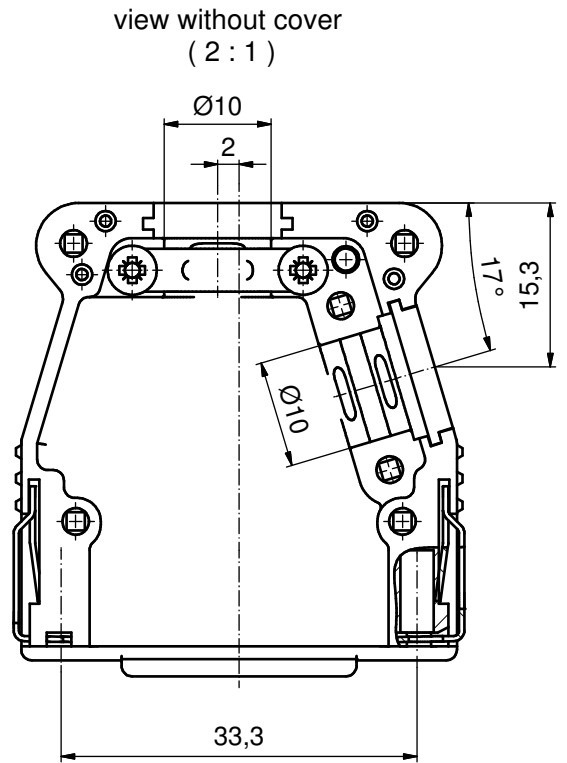
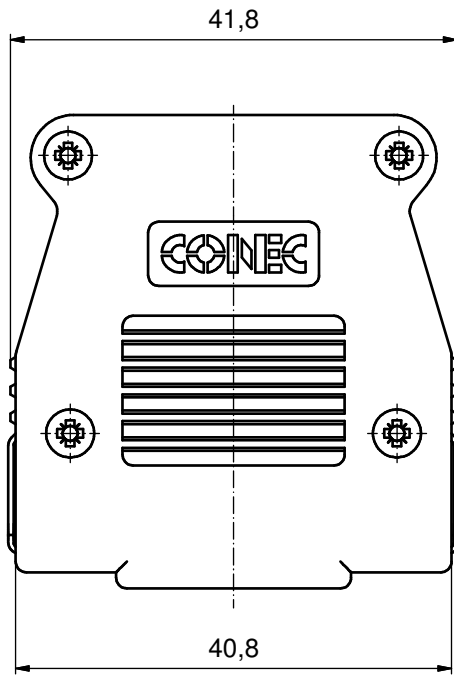
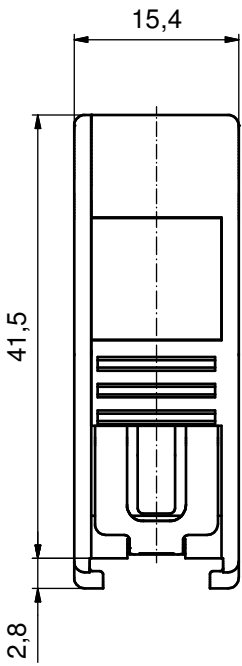


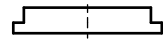
6 5 4 3 2 1



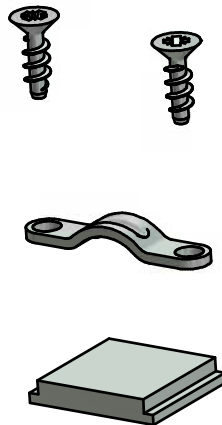
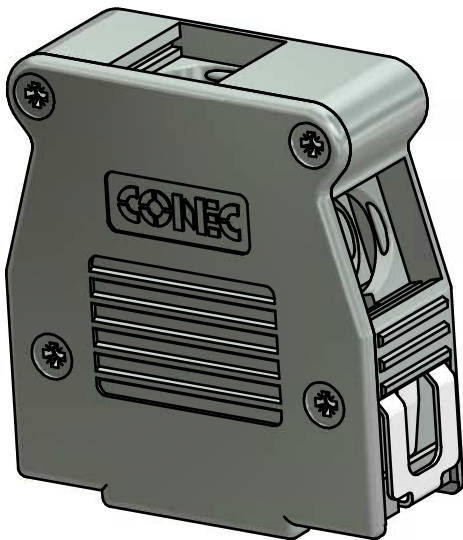
COUNTERSUNK HEAD SCREWS (6x)



CABLE STRAIN RELIEF



BLANKING PLUG



b	Part-No.	Part-No.
	Bulk package	Single package
	16-001760	16-001760E

**HOOD ASSEMBLY CONSISTS OF:**

1. HOOD + COVER: ABS UL 94 V-0; NICKEL PLATED
2. BLANKING PLUGS: ABS UL 94 V-0; NICKEL PLATED
3. CABLE STRAIN RELIEF: STEEL; NICKEL PLATED
4. CLIP: STAINLESS STEEL
5. COUNTERSUNK HEAD SCREWS: STEEL; NICKEL PLATED

RoHS compliant

THIS DRAWING MAY NOT BE COPIED OR REPRODUCED IN ANY WAY, AND MAY NOT BE PASSED ON TO A THIRD PARTY WITHOUT WRITTEN PERMISSION. OWNERSHIP AND COPYRIGHT OF CONEC GmbH DO NOT ALTER CAD DRAWING BY HAND	tolerance			dim. in mm	scale: 2:1	
					material: see drawing	
				date	name	title: <b>Plastic Hood 15pos</b> with Snap Lock / top and side cable exit
				drawn	24.09.14 Henneboel	
				appd.	24.09.14 Strakerjahn	
				norm		
			d-old		dwg no:	
2 x b	Ä5619	22.04.2015	K.H.		16K1A3530	DIN-A3
a	Original					sh: 1
rev.	description	date	name	<b>CONEC</b>		part no: b SEE TABLE

6 5 4 3 2 1