




INSERT CAP FOR PUSHBUTTON AND ILLUMINATED
 PUSHBUTTON RAISED TRANSPARENT, W/O
 INSCRIPTION,



General technical data:

| | | |
|---|----|--------------------|
| Product type designation | | Insert cap |
| Shape of the name plate for command devices | | round |
| Color of the label | | clear |
| Outer diameter | mm | 18 |
| Printed marking | | without text |
| Printed ISO symbols | | without ISO symbol |

Certificates/ approvals:

| General Product Approval | Declaration of Conformity | Test Certificates | other |
|---|---|---|--|
|  UL |  |  EG-Konf. | Special Test Certificate other Environmental Confirmations |

other

[Confirmation](#)

Further information

Information- and Downloadcenter (Catalogs, Brochures,...)
<http://www.siemens.com/industrial-controls/catalogs>

Industry Mall (Online ordering system)

<http://www.siemens.com/industrymall>

Cax online generator

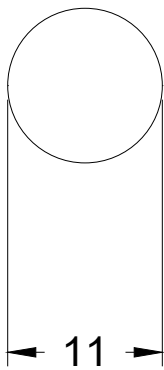
<http://support.automation.siemens.com/WW/CAXorder/default.aspx?lang=en&mlfb=3SB29015AA>

Service&Support (Manuals, Certificates, Characteristics, FAQs,...)

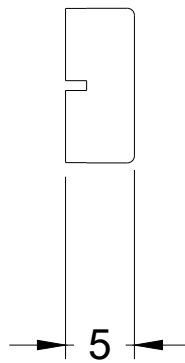
<http://support.automation.siemens.com/WW/view/en/3SB29015AA/all>

Image database (product images, 2D dimension drawings, 3D models, device circuit diagrams, EPLAN macros, ...)

<http://www.automation.siemens.com/bilddb/index.aspx?attID9=3SB29015AA&lang=en>



last modified:



09.03.2015