

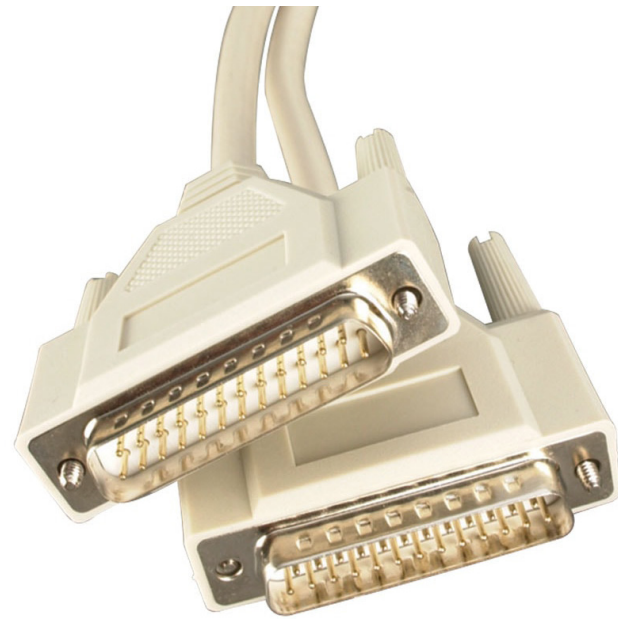
## Serial RS232 Cables Fully Moulded Universal RS232 25 D Type Cables

Part No: See Chart

The high speed universal cables are fully moulded leads suitable for both serial and parallel applications. Supplied in Male to Male, Male to Female and Female to Female format, they are wired on a one to one, all lines straight through configuration.

### Features & Benefits

- Provides quality data transfer with performance and reliability guaranteed
- Moulded assembly with fully encapsulated hoods and thumb screws
- Extended distance capability
- Multi-purpose cables with flexible use
- All lines wired 1 to 1 configuration



### Part Number Chart

Part Code	Description
	<b>Moulded 25 D Plug to Plug</b>
1120	VIDEK DB25M to DB25M Moulded Universal Cable 2Mtr
1134	VIDEK DB25M to DB25M Moulded Universal Cable 3Mtr
1123	VIDEK DB25M to DB25M Moulded Universal Cable 5Mtr
1126	VIDEK DB25M to DB25M Moulded Universal Cable 10Mtr

# Serial RS232 Cables Fully Moulded

## Universal RS232 25 D Type Cables

Part No: See Chart

### Part Number Chart

Part Code	Description
	<b>Moulded 25 D Plug to Socket</b>
<b>1121</b>	VIDEK DB25M to DB25F Moulded Universal Cable 2Mtr
<b>1135</b>	VIDEK DB25M to DB25F Moulded Universal Cable 3Mtr
<b>1124</b>	VIDEK DB25M to DB25F Moulded Universal Cable 5Mtr
<b>1127</b>	VIDEK DB25M to DB25F Moulded Universal Cable 10Mtr
	<b>Moulded 25 D Socket to Socket</b>
<b>1122</b>	VIDEK DB25F to DB25F Moulded Universal Cable 2Mtr