

ADAPTER FOR DIN RAIL MOUNTING OF RESIDUAL CURRENT TRANSFORMERS 3UL23 UP TO 55MM INNER DIAMETER



Figure similar

General technical data:

product brand name		SIRIUS
Product designation		Holder
Equipment marking acc. to DIN EN 81346-2		B

Ambient conditions:

Ambient temperature		
• during transport	°C	-25 ... +60
• during operation	°C	-25 ... +60
• during storage	°C	-40 ... +85
Relative humidity during operation	%	95
Installation altitude at height above sea level	m	2 000

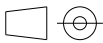
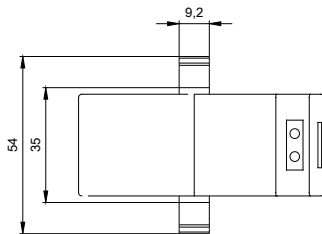
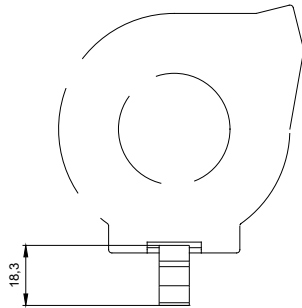
Installation/ mounting/ dimensions:

Width	mm	10
Height	mm	56.5
Depth	mm	18.3
mounting position		standing, on horizontal mounting surface
Mounting type		snap-on mounting

Certificates/ approvals:



Further information

Information- and Downloadcenter (Catalogs, Brochures,...)<http://www.siemens.com/industrial-controls/catalogs>**Industry Mall (Online ordering system)**<http://www.siemens.com/industrymall>**Cax online generator**<http://support.automation.siemens.com/WW/CAXorder/default.aspx?lang=en&mfb=3UL2900>**Service&Support (Manuals, Certificates, Characteristics, FAQs,...)**<https://support.industry.siemens.com/cs/ww/en/ps/3UL2900>**Image database (product images, 2D dimension drawings, 3D models, device circuit diagrams, EPLAN macros, ...)**http://www.automation.siemens.com/bilddb/cax_de.aspx?mfb=3UL2900&lang=en

W7 2222: 3UL2900_ALL

last modified:

16.03.2015