

# SURFACE DISINFECTANT WIPES

Our market leading range of alcohol, QUAT and PHMB free disinfectant wipes designed specifically for food contact surfaces. Halal certified and also ideal for Kosher food preparation, these highly effective disinfectant wipes come in a wide range of formats and sizes.

7 products in this range.

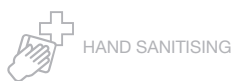


## AT A GLANCE:

- ✓ Alcohol Free
- ✓ Quat Free
- ✓ PHMB Free
- ✓ Food safe

## IDEAL FOR:

- ✓ Hard surface disinfection including surfaces sensitive to alcohol
- ✓ Use within all food and beverage processing and manufacturing
- ✓ Large scale economical cleaning and disinfecting



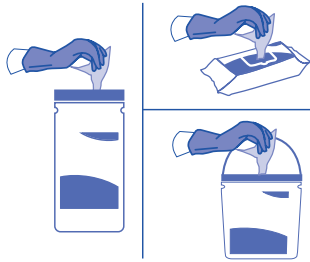
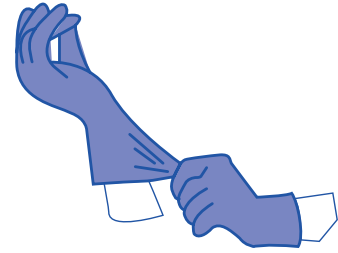
Scan for online factsheet  
and safety data sheet

## HOW TO USE:

STEP 1

### RISK ASSESSMENT

Please follow your agreed risk assessment policy guidelines regarding the use of PPE.



STEP 2

### WIPE SELECTION

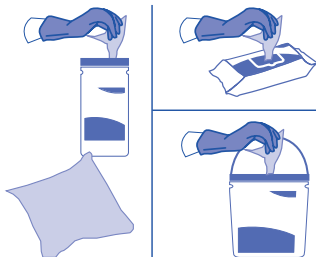
Choose the dispenser type and dispense the wipe.

STEP 3

### S-SHAPE TECHNIQUE

Wipe the surface in an S Shape moving from clean to dirty. Use the wipe flat not scrunched.

Do not go over the same area twice with the same wipe.



STEP 4

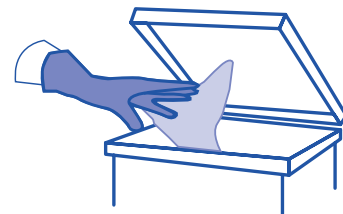
### FRESH WIPE

Use a fresh wipe if your wipe becomes soiled or dry.

STEP 5

### DISCARD

Discard used wipes in the appropriate waste bin following your local agreed guidelines.



Do not flush



STEP 6

### LET DRY

Allow the surface to dry before use.

## TECHNICAL DETAILS



PalTX Surface Disinfectant Wipes are ideal for use in a wide range of clean environments, in particular food and beverage manufacture or processing with a food safe and easily detectable blue material.

These cost effective wipes are perfect for alcohol sensitive environments, and with Halal and Kosher accreditation can be used widely throughout food processing environments.

### CHEMICAL FORMULATION

PalTX Surface Disinfectant Wipes use a specially formulated solution containing N,N-bis(3-aminopropyl) dodecylamine. The disinfectant is characterised by good activity against mycobacteria, low efficiency loss under protein load and little foaming as well as being quat, alcohol and PHMB free which makes it ideal for use within the food industry.

### MATERIALS

Tritex<sup>®</sup> material is made by bonding layers of spunbond and meltblown polypropylene fibres together in a high heat process before a hydrophilic coating is applied. This material is 100% synthetic.



#### High Strength

The material offers high strength in both directions – across and along the wipe.



#### Excellent Solution Retention

Ensuring even wetness throughout the wipe.



#### Very Low Linting

Low risk of leaving contaminating fibres on surfaces.



#### Efficient Solution Release

Active wipe ingredients are transferred to the surface rather than being trapped in the wipe material fibres.

#### For the Q/W64230T only:

Spunlace material is made by mechanically entangling fibres through the application of high pressure water jets. This gives the material a thick, soft and strong feel. The apertured texture gives the wipes a high liquid capacity which makes them suitable for wiping larger surfaces and the drape of the material gives a 'cloth-like' feel.

## Efficacy details

Effective Against	Test	Kill Time
<b>BACTERICIDAL</b>		
Campylobacter Jejuni	EN 1276	1 minute
E. Coli 0157	EN 1276	1 minute
Enterococcus Hirae	EN 16615	5 minutes
	EN 13727	1 minute
	EN 13697	1 minute
	EN 1276	1 minute
Escherichia Coli	EN 13697	1 minute
	EN 1276	1 minute
Lactobacillus Brevis	EN 1276	1 minute
Listeria Monocytogenes	EN 1276	1 minute
Pseudomonas Aeruginosa	EN 16615	5 minutes
	EN 13727	1 minute
	EN 13697	1 minute
	EN 1276	1 minute
Salmonella Typhimurium	EN 1276	1 minute
Serratia Marcescens	EN 1276	1 minute
Shigella Sonnei	EN 1276	1 minute
Staphylococcus Aureus	EN 16615	5 minutes
	EN 13727	1 minute
	EN 13697	1 minute
	EN 1276	1 minute

## Efficacy details

Effective Against	Test	Kill Time
<b>VIRUCIDAL</b>		
Coronavirus	EN 14476	5 minutes
*These organisms represent envelope virus efficacy according to EN 14476 2013 + A1 2015 Annex A		
<b>YEASTICIDAL AND FUNGICIDAL</b>		
Candida Albicans	EN 1650	1 minute



## PRODUCTS WITHIN THIS RANGE

### 70 WIPE CANISTER



**Quantity:**  
70 per pack  
48 packs per case

**Product Code:**  
W65231T

### 200 WIPE CANISTER



**Quantity:**  
200 per pack  
10 packs per case

**Product Code:**  
W258230T

### 500 WIPE BUCKET



**Quantity:**  
500 per pack  
1 pack per case

**Product Code:**  
W64230T

### 1000 WIPE BUCKET



**Quantity:**  
1000 per pack  
1 pack per case

**Product Code:**  
W131230T

### 1500 WIPE BUCKET



**Quantity:**  
1500 per pack  
2 packs per case

**Product Code:**  
W233230T

### 500 WIPE REFILL BAG



**Quantity:**  
500 per pack  
3 packs per case

**Product Code:**  
Q64230T

### 1000 WIPE REFILL BAG



**Quantity:**  
1000 per pack  
3 packs per case

**Product Code:**  
Q131230T