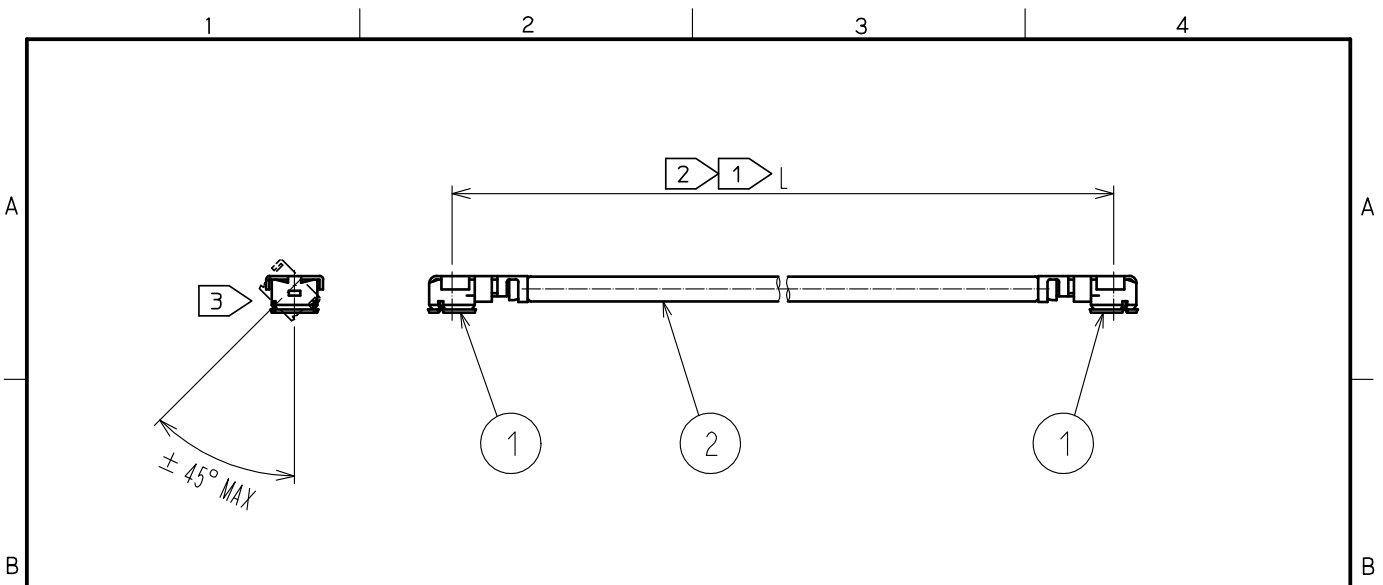


Jun.1.2020 Copyright 2020 HIROSE ELECTRIC CO., LTD. All Rights Reserved.
In case of consideration for using Automotive equipment / device which demand high reliability, kindly contact our sales window correspondents.



Part No.	Cable color
~066*1~	GRAY
~066*2~	BLACK

HRS DRAWING TOP REFERENCE

NOTE ① We indicate the length of the harness on the last of product name. 'L' part.

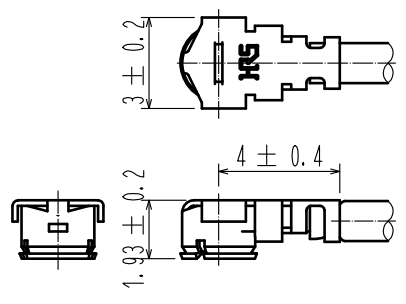
② Tolerance for [L]

Length L [mm]	Tolerance [mm]
35 ≦ L ≦ 200	±4
200 < L ≦ 500	±8
500 < L ≦ 1000	±12
1000 < L	±1.5%

③ Connector rotation angle is within ±45 degree from the above image.
For long length in the case of L>500, the angle is optional.

4. Specifications are subject to change without notice.

【 DIMENSIONS OF CONNECTOR 】



1	U. FL-LP-066HF	CL331-0558-6	2	1.32 Dia. coaxial cable	HALOGEN FREE
NO.	PART NO.	CODE NO.	NO.	PART NO.	
UNITS mm		SCALE FREE	COUNT ① 1	DESCRIPTION OF REVISIONS DIS-D-00003255	DESIGNED MS. MATSUMOTO
				CHECKED MT. KANEKO	DATE 18.06.19
HRS	HIROSE ELECTRIC CO., LTD.	APPROVED :NK. NINOMIYA	16.07.25	DRAWING NO. U. FL-2LPHF6-066**-A-L ①	
		CHECKED :MT. KANEKO	16.07.25		
		DESIGNED :MS. MATSUMOTO	16.07.25		
		DRAWN :MS. MATSUMOTO	16.07.25		
				CODE NO.	①/①