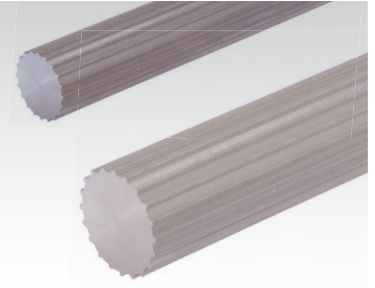
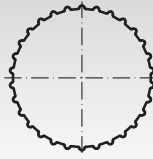
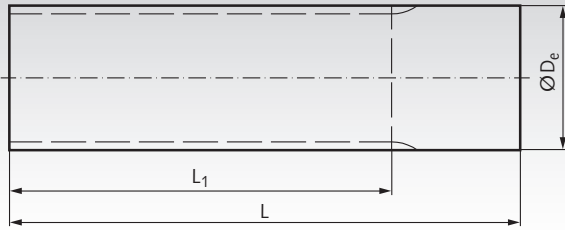


Timing Bars, for Timing Belts Profile AT, Steel and Stainless Steel



Material: Steel C45.

Stainless steel 1.4305 (AISI 303). 

Ordering Details: e.g.: Product No. 16691201, Timing Bar AT5, No. of Teeth 12, Steel

Other types and materials on request.

Profile AT 5, Steel

Product No.	Number of teeth	De mm	L ₁ mm	L mm	Weight kg
166 912 01	12	17,88	140	140	0,24
166 915 01	15	22,65	140	140	0,41
166 917 01	17	25,84	140	140	0,54
166 920 01	20	30,61	160	160	0,87
166 925 01	25	38,57	160	160	1,36
166 930 01	30	46,53	160	160	2,00
166 932 01	32	49,71	160	160	2,35
166 936 01	36	56,08	160	160	2,61
166 940 01	40	62,44	160	160	3,71
166 948 01	48	75,17	160	160	5,55
166 960 01	60	94,27	160	160	8,82

Profile AT 10, Steel

Product No.	Number of teeth	De mm	L ₁ mm	L mm	Weight kg
168 915 01	15	45,93	160	160	1,86
168 920 01	20	61,84	160	160	3,39
168 925 01	25	77,76	160	160	5,53
168 930 01	30	93,67	160	160	8,08
168 932 01	32	100,04	160	160	9,27
168 936 01	36	112,77	160	160	11,85
168 940 01	40	125,5	160	160	14,95

Profile AT 5, Stainless Steel

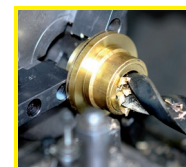
Product No.	Number of teeth	De mm	L ₁ mm	L mm	Weight kg
166 999 12	12	17,88	140	140	0,24
166 999 15	15	22,65	140	140	0,41
166 999 16	16	24,24	140	140	0,43
166 999 18	18	27,43	140	140	0,58
166 999 20	20	30,61	160	160	0,87
166 999 24	24	36,98	160	160	1,27
166 999 25	25	38,57	160	160	1,36
166 999 30	30	46,53	160	160	2,00
166 999 32	32	49,71	160	160	2,35
166 999 36	36	56,08	160	160	2,61
166 999 40	40	62,44	160	160	3,71

Profile AT 10, Stainless Steel

Product No.	Number of teeth	De mm	L ₁ mm	L mm	Weight kg
168 999 16	16	49,11	160	160	2,09
168 999 18	18	55,48	160	160	2,72
168 999 20	20	61,84	160	160	3,39
168 999 22	22	68,21	160	160	4,17
168 999 24	24	74,57	160	160	5,07
168 999 25	25	77,76	160	160	5,53
168 999 30	30	93,67	160	160	8,08
168 999 32	32	100,04	160	160	9,27
168 999 36	36	112,77	160	160	11,85
168 999 40	40	125,5	160	160	14,95



Flanges page 198



Reworking within
24h-service possible.
Custom made parts
on request.