

## Tool clamp

Large base plate, for walls with 10 x 10 mm square holes

<sup>®</sup>**RasterPlan**

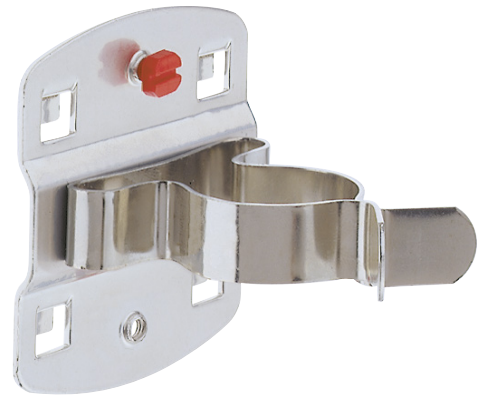
### Application:

Individual holder for tools and parts in perforated metal plate walls with 10 x 10 mm square holes, axis distance 38 mm.

### Delivery:

Screw included in scope of delivery

|                                       |                    |
|---------------------------------------|--------------------|
| <b>Art. no.</b>                       | <b>50638 608</b>   |
| <b>Brand</b>                          | RASTERPLAN         |
| <b>Manufacturer Part Number</b>       | 4043.00.1201       |
| <b>Suitable for perforated plates</b> | Yes                |
| <b>Suitable for slotted plates</b>    | No                 |
| <b>Diameter of retaining ring</b>     | 28 mm              |
| <b>Number of carriers</b>             | 1 PCS              |
| <b>Material</b>                       | Sheet steel        |
| <b>Colour</b>                         | Aluminium coloured |
| <b>Gross Weight</b>                   | 0.092 kg           |
| <b>Product Group</b>                  | 5AC                |



### EAN

4251142206065