

64615 HLX

Halogen lamps with reflector MR16



Product features

- Xenon instead of krypton as the filler gas (XENOPHOT HLX versions)
- Luminous flux up to 10 % higher with same power consumption (XENOPHOT HLX versions)



Product datasheet

Technical data

Electrical data

Nominal voltage	12.0 V
Nominal wattage	75.00 W

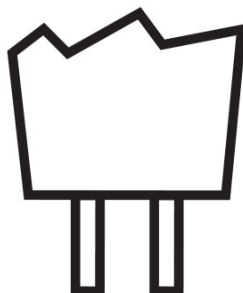
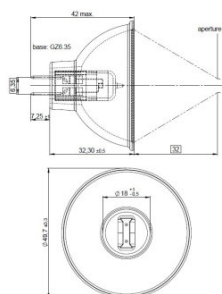
Photometrical data

Maximum color temperature	3200 K
---------------------------	--------

Light technical data

Focal length	32.0 mm
--------------	---------

Dimensions & weight



Diameter	51.0 mm
Length	42.0 mm

Lifespan

Lifespan	50 h
----------	------

Additional product data

Coating	Dichroic
Base (standard designation)	GZ6.35
Minimum diameter of lamp enclosure	51.0 mm

Capabilities

Dimmable	Yes
Cooling	Forced
Burning position	p90/p15

Product datasheet

Certificates & standards

EEI – Energy Label	B
--------------------	---

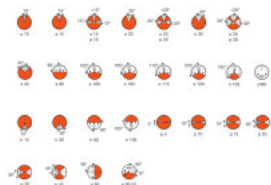
Country specific categorizations

ANSI code	EFN
LIF	A1/230
Order reference	64615 HLX

Country specific information

Product code	METEL code	SEG-No.	STK-Number	UK Org
4050300006796	OSRH64615HLX	-	-	-
4050300006796	OSRH64615HLX	-	-	-

Product datasheet



Logistical Data

Product code	Product description	Packaging unit (Pieces/Unit)	Dimensions (length x width x height)	Volume	Gross weight
4050300006796	64615 HLX	Folding carton box 1	58 mm x 46 mm x 46 mm	0.12 dm ³	36.00 g
4050300665528	64615 HLX	Shipping carton box 20	238 mm x 121 mm x 107 mm	3.08 dm ³	796.00 g

The mentioned product code describes the smallest quantity unit which can be ordered. One shipping unit can contain one or more single products. When placing an order, for the quantity please enter single or multiples of a shipping unit.

References / Links

For further technical information please refer to the following OSRAM brochure:
“Technology and applications, Low-voltage tungsten-halogen lamps”
“Halogen lamps, low and medium voltage for entertainment, technical and medical applications” cross reference list

Disclaimer

Subject to change without notice. Errors and omission excepted. Always make sure to use the most recent release.