

**PLEASE CHECK WWW.MOLEX.COM FOR LATEST PART INFORMATION**

**Part Number:** [2078430004](#)  
**Status:** **Active**  
**Overview:** [KK Interconnect Systems](#)  
**Description:** KK Plus 250 Header, 2.50mm Pitch, Vertical, Fully Shrouded, Tin (Sn) Plating, 4 Circuits, with Peg, Glow-Wire Capable

**Documents:**

<a href="#">3D Model</a>	<a href="#">Product Specification 2079020001-PS-SK-000 (PDF)</a>
<a href="#">Drawing (PDF)</a>	<a href="#">Application Specification 2079020001-AS-000 (PDF)</a>
<a href="#">3D Model (PDF)</a>	<a href="#">Packaging Specification 2078430000-PK-000 (PDF)</a>
<a href="#">Product Specification 2079020001-PS-000 (PDF)</a>	<a href="#">Test Summary 2079020000-TS-000 (PDF)</a>
<a href="#">Product Specification 2079020001-PS-CH-000 (PDF)</a>	<a href="#">Datasheet (PDF)</a>
<a href="#">Product Specification 2079020001-PS-ES-000 (PDF)</a>	<a href="#">RoHS Certificate of Compliance (PDF)</a>
<a href="#">Product Specification 2079020001-PS-JP-000 (PDF)</a>	

**Agency Certification**

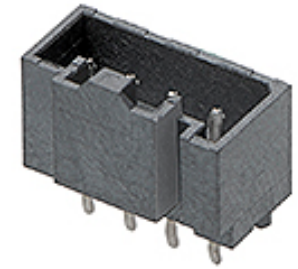
CSA 152514

**General**

Product Family	PCB Headers
Series	<a href="#">207843</a>
Application	Power, Wire-to-Board
Component Type	PCB Header
Overview	<a href="#">KK Interconnect Systems</a>
Product Name	KK Plus
Taxonomy	PCB Headers and Receptacles
UPC	191130123148

**Physical**

Breakaway	No
Circuits (Loaded)	4
Circuits (maximum)	4
Color - Resin	Black
Durability (mating cycles max)	25
First Mate / Last Break	No
Flammability	94V-0
Glow-Wire Capable	Yes
Guide to Mating Part	No
Keying to Mating Part	None
Lock to Mating Part	Yes
Material - Metal	Brass
Material - Plating Mating	Tin
Material - Plating Termination	Tin
Material - Resin	Liquid Crystal Polymer
Net Weight	0.429/g
Number of Rows	1
Orientation	Vertical
PC Tail Length	3.45mm
PCB Locator	No
PCB Retention	None
PCB Thickness - Recommended	1.60mm
Packaging Type	Bag
Pitch - Mating Interface	2.50mm
Pitch - Termination Interface	2.50mm
Polarized to Mating Part	Yes
Polarized to PCB	Yes
Shrouded	Fully



*Series image - Reference only*

**EU ELV**

**Not Relevant**

**EU RoHS**

**Compliant**

**REACH SVHC**

Not Contained Per -  
D(2022)4187-DC (10  
June 2022)

**Halogen-Free**

**Status**

**Low-Halogen**

For more information, please visit [Contact US](#)

China ROHS

ELV

RoHS Phthalates

**China RoHS**

Green Image

Not Relevant

Not Contained

**Search Parts in this Series**

[207843 Series](#)

**Mates With**

KK Plus 250 Receptacle Housing [207841](#)

Stackable	No
Surface Mount Compatible (SMC)	No
Temperature Range - Operating	-40° to +105°C
Termination Interface: Style	Through Hole

**Electrical**

Current - Maximum per Contact	6.5A
Voltage - Maximum	250V AC (RMS)/DC

**Material Info**

**Reference - Drawing Numbers**

Application Specification	2079020001-AS-000
Packaging Specification	2078430000-PK-000
Product Specification	2079020001-PS-000, 2079020001-PS-CH-000, 2079020001-PS-ES-000, 2079020001-PS-JP-000, 2079020001-PS-SK-000
Sales Drawing	2078430004-SD-000
Test Summary	2079020000-TS-000

This document was generated on 02/07/2023

**PLEASE CHECK [WWW.MOLEX.COM](http://WWW.MOLEX.COM) FOR LATEST PART INFORMATION**