

A32b HALF PITCH IDC SOCKET WITH LATCH

PITCH: 1.27mm * 1.27mm

SPECIFICATIONS

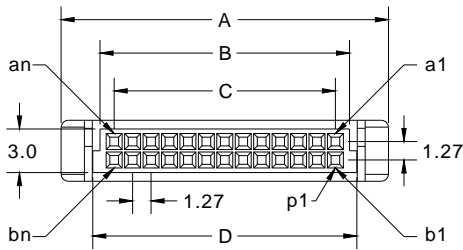
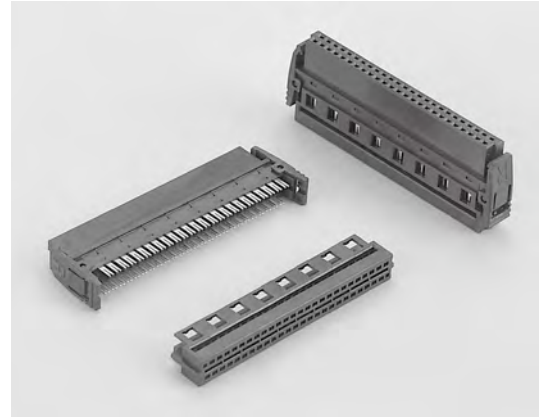
Material

Insulator : LCP, glass reinforced, rated UL 94V-0
 Contact : Phosphor Bronze

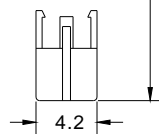
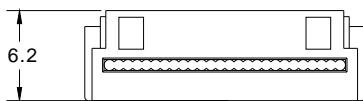
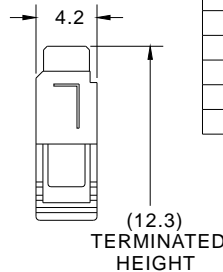
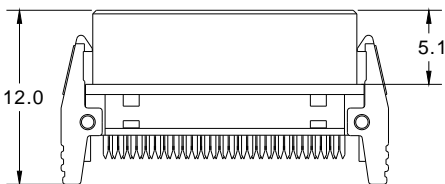
Electrical

Current Rating : 1 Amp
 Contact Resistance : 30 mΩ max.
 Insulation Resistance : 1000 MΩ min.
 Dielectric Withstanding Voltage : 250V AC for 1minute
 Operating Temperature : -40°C to +105°C

- ▶ Terminated with L03-0.635mm pitch flat ribbon cable.
- ▶ Mating Suggestion : C56, C57, C57a & C58 series.



| POSITION | A | B | C | D |
|----------|-------|-------|-------|-------|
| 6 | 9.85 | 4.49 | 2.54 | 5.49 |
| 8 | 11.12 | 5.76 | 3.81 | 6.76 |
| 10 | 12.39 | 7.03 | 5.08 | 8.03 |
| 12 | 13.66 | 8.30 | 6.35 | 9.30 |
| 14 | 14.93 | 9.57 | 7.62 | 10.57 |
| 16 | 16.20 | 10.84 | 8.89 | 11.84 |
| 20 | 18.74 | 13.38 | 11.43 | 14.38 |
| 22 | 20.01 | 14.65 | 12.70 | 15.65 |
| 26 | 22.55 | 17.19 | 15.24 | 18.19 |
| 30 | 25.09 | 19.73 | 17.78 | 20.73 |
| 34 | 27.63 | 22.27 | 20.32 | 23.27 |
| 40 | 31.44 | 26.08 | 24.13 | 27.08 |
| 44 | 33.98 | 28.62 | 26.67 | 29.62 |
| 50 | 37.79 | 32.43 | 30.48 | 33.43 |
| 60 | 44.14 | 38.78 | 36.83 | 39.78 |
| 68 | 49.22 | 43.86 | 41.91 | 44.86 |
| 80 | 56.84 | 51.48 | 49.53 | 52.48 |



How to order: A32b - 1 - 2 - 3 - 4 - G(RoHS)

| 1.NO. OF CONTACT | 2.CONTACT MATERIAL | 3.CONTACT PLATING | 4.INSULATOR COLOR |
|--|--------------------|---|-------------------|
| 06 08 10 12 14 16 20 22 26 30 34 40 44 50 60 68 80 | B: PHOSPHOR BRONZE | T: TIN PLATED S: SELECTIVE G: GOLD FLASH A: 5u" INCH GOLD B: 10u" INCH GOLD C: 15u" INCH GOLD D: 30u" INCH GOLD | 1. BLACK |