

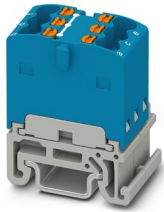
Distribution block - PTFIX 6X1,5-NS15A BU



3002919

<https://www.phoenixcontact.com/gb/products/3002919>

Please be informed that the data shown in this PDF document is generated from our Online Catalog. Please find the complete data in the user documentation. Our General Terms of Use for Downloads are valid.



Distribution block, the blocks can be bridged with one another via the conductor shaft, for corresponding plug-in bridges, see accessories, bridged internally, nom. voltage: 500 V, nominal current: 17.5 A, connection method: Push-in connection, cross section: 0.14 mm² - 2.5 mm², mounting type: NS 15, color: blue

Your advantages

- Space-saving, thanks to the compact design
- Flexible use, thanks to DIN rail and direct mounting
- Space-saving potential distribution, thanks to compact micro potential distributors
- Convenient test options, thanks to test openings at every terminal point
- Clear arrangement thanks to marking of all terminal points

Commercial Data

Item number	3002919
Packing unit	20 pc
Minimum order quantity	20 pc
Sales Key	BEA113
Product Key	BEA113
Catalog Page	Page 433 (C-1-2019)
GTIN	4055626433325
Weight per Piece (including packing)	6.407 g
Weight per Piece (excluding packing)	5.895 g
Customs tariff number	85369010
Country of origin	PL

Technical Data

Notes

Notes on operation	the blocks can be bridged with one another via the conductor shaft, for corresponding plug-in bridges, see accessories
--------------------	--

General

Note	The maximum load current of a single clamping unit must not be exceeded.
------	--

Product properties

Product type	Distributor terminal block
Number of connections	6
Number of rows	1
Potentials	1

Insulation characteristics

Overvoltage category	III
Degree of pollution	3

Electrical properties

Rated surge voltage	6 kV
Maximum power dissipation for nominal condition	0.56 W

Connection data

Number of connections per level	6
Nominal cross section	1.5 mm ²
Rated cross section AWG	14
Stripping length	8 mm ... 10 mm
Internal cylindrical gage	A1 / B1
Connection in acc. with standard	IEC 60947-7-1
Conductor cross section solid	0.14 mm ² ... 2.5 mm ²
Cross section AWG	26 ... 14 (converted acc. to IEC)
Conductor cross section flexible	0.14 mm ² ... 1.5 mm ²
Conductor cross section, flexible [AWG]	24 ... 14 (converted acc. to IEC)
Flexible conductor cross section flexible (ferrule, w/o plastic sleeve)	0.14 mm ² ... 1.5 mm ²
Flexible conductor cross section (ferrule with plastic sleeve)	0.14 mm ² ... 1.5 mm ²
Nominal current	17.5 A
Maximum load current	22 A
Maximum total current	26 A
Nominal voltage	500 V

Connection cross sections directly pluggable

Conductor cross section solid	0.34 mm ² ... 2.5 mm ²
Flexible conductor cross section flexible (ferrule, w/o plastic sleeve)	0.34 mm ² ... 1.5 mm ²

Distribution block - PTFIX 6X1,5-NS15A BU



3002919

<https://www.phoenixcontact.com/gb/products/3002919>

sleeve)	
Flexible conductor cross section (ferrule with plastic sleeve)	0.34 mm ² ... 1.5 mm ²

Dimensions

Width	12.5 mm
Height NS 15	27.4 mm
Length	21.6 mm

Material specifications

Color	blue
Flammability rating according to UL 94	V0
Insulating material group	I
Insulating material	PA
Static insulating material application in cold	-60 °C
Temperature index of insulation material (DIN EN 60216-1 (VDE 0304-21))	125 °C
Relative insulation material temperature index (Elec., UL 746 B)	130 °C
Fire protection for rail vehicles (DIN EN 45545-2) R22	HL 1 - HL 3
Fire protection for rail vehicles (DIN EN 45545-2) R23	HL 1 - HL 3
Fire protection for rail vehicles (DIN EN 45545-2) R24	HL 1 - HL 3
Fire protection for rail vehicles (DIN EN 45545-2) R26	HL 1 - HL 3
Calorimetric heat release NFPA 130 (ASTM E 1354)	27,5 MJ/kg
Surface flammability NFPA 130 (ASTM E 162)	passed
Specific optical density of smoke NFPA 130 (ASTM E 662)	passed
Smoke gas toxicity NFPA 130 (SMP 800C)	passed

Electrical tests

Surge voltage test

Test voltage setpoint	7.3 kV
Result	Test passed

Temperature-rise test

Requirement temperature-rise test	Increase in temperature ≤ 45 K
Result	Test passed
Short-time withstand current 1.5 mm ²	0.18 kA
Short-time withstand current 2.5 mm ²	0.3 kA
Result	Test passed

Power-frequency withstand voltage

Test voltage setpoint	1.89 kV
Result	Test passed

Mechanical properties

Mechanical data

Open side panel	No
-----------------	----

Mechanical tests

Mechanical strength

Result	Test passed
--------	-------------

Attachment on the carrier

DIN rail/fixing support	NS 35/NS 15
Test force setpoint	1 N
Result	Test passed
Note	<p>When aligning several blocks, it is recommended to either place a DIN rail adapter underneath the connection point or a flange element between the blocks.</p> <p>For versions with 6 or 7 connections, it is enough to place one DIN rail adapter centrally per block and place flange elements after every other block.</p> <p>When using the DIN rail adapter PTFIX-NS35, an aligned block must not protrude by more than a half.</p>

Test for conductor damage and slackening

Rotation speed	10 rpm
Revolutions	135
Conductor cross section/weight	0.14 mm ² / 0.2 kg
	1.5 mm ² / 0.4 kg
	2.5 mm ² / 0.7 kg
Result	Test passed

Environmental and real-life conditions

Aging

Temperature cycles	192
Result	Test passed

Needle-flame test

Time of exposure	30 s
Result	Test passed

Oscillation/broadband noise

Specification	DIN EN 50155 (VDE 0115-200):2018-05
Spectrum	Service life test category 2, bogie-mounted
Frequency	$f_1 = 5 \text{ Hz}$ to $f_2 = 250 \text{ Hz}$
ASD level	6.12 (m/s ²) ² /Hz
Acceleration	3.12g
Test duration per axis	0.00138888888889 h
Test directions	X-, Y- and Z-axis
Result	Test passed

Shocks

Specification	DIN EN 50155 (VDE 0115-200):2018-05
---------------	-------------------------------------

Distribution block - PTFIX 6X1,5-NS15A BU



3002919

<https://www.phoenixcontact.com/gb/products/3002919>

Pulse shape	Half-sine
Acceleration	30g
Shock duration	18 ms
Number of shocks per direction	3
Test directions	X-, Y- and Z-axis (pos. and neg.)
Result	Test passed

Ambient conditions

Ambient temperature (operation)	-60 °C ... 105 °C (max. short-term operating temperature RTI Elec.)
Ambient temperature (storage/transport)	-25 °C ... 60 °C (for a short time, not exceeding 24 h, -60 °C to +70 °C)
Ambient temperature (assembly)	-5 °C ... 70 °C
Ambient temperature (actuation)	-5 °C ... 70 °C
Permissible humidity (storage/transport)	30 % ... 70 %

Standards and regulations

Connection in acc. with standard	IEC 60947-7-1
----------------------------------	---------------

Mounting

Mounting type	NS 15
---------------	-------

Distribution block - PTFIX 6X1,5-NS15A BU

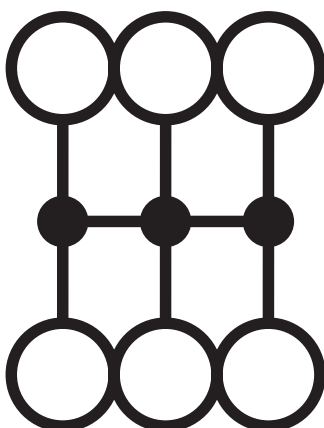
3002919

<https://www.phoenixcontact.com/gb/products/3002919>



Drawings

Circuit diagram



Distribution block - PTFIX 6X1,5-NS15A BU



3002919

<https://www.phoenixcontact.com/gb/products/3002919>

Approvals

DNV Approval ID: TAE00002TT				
	Nominal Voltage U_N	Nominal Current I_N	Cross Section AWG	Cross Section mm^2
	500 V	24 A	-	-

CSA Approval ID: 13631				
	Nominal Voltage U_N	Nominal Current I_N	Cross Section AWG	Cross Section mm^2
Use group B	300 V	20 A	26 - 12	-
Use group C	150 V	20 A	26 - 12	-
Use group D	300 V	10 A	26 - 12	-

IECEE CB Scheme Approval ID: DE1-62701				
	Nominal Voltage U_N	Nominal Current I_N	Cross Section AWG	Cross Section mm^2
	500 V	17.5 A	-	- 1.5

EAC Approval ID: RU C-DE.BL08.B.00644				
---	--	--	--	--

LR Approval ID: LR2002627TA				
---------------------------------------	--	--	--	--

BV Approval ID: 59146/A0 BV				
---------------------------------------	--	--	--	--

VDE Zeichengenehmigung Approval ID: 40047797				
--	--	--	--	--

cULus Recognized Approval ID: E60425				
	Nominal Voltage U_N	Nominal Current I_N	Cross Section AWG	Cross Section mm^2
Use group B	300 V	20 A	26 - 12	-

Distribution block - PTFIX 6X1,5-NS15A BU



3002919

<https://www.phoenixcontact.com/gb/products/3002919>

Use group C	150 V	20 A	26 - 12	-
Use group F	500 V	20 A	26 - 12	-
Use group D	300 V	10 A	26 - 12	-

Distribution block - PTFIX 6X1,5-NS15A BU



3002919

<https://www.phoenixcontact.com/gb/products/3002919>

Classifications

ECLASS

ECLASS-9.0	27141120
ECLASS-10.0.1	27141120
ECLASS-11.0	27141120

ETIM

ETIM 8.0	EC000897
----------	----------

UNSPSC

UNSPSC 21.0	39121400
-------------	----------

Distribution block - PTFIX 6X1,5-NS15A BU



3002919

<https://www.phoenixcontact.com/gb/products/3002919>

Environmental Product Compliance

China RoHS	Environmentally friendly use period: unlimited = EFUP-e
	No hazardous substances above threshold values

Distribution block - PTFIX 6X1,5-NS15A BU

3002919

<https://www.phoenixcontact.com/gb/products/3002919>

Accessories

 Note: Applying some accessories below might limit this product.

Plug-in bridge

Plug-in bridge - FBS 2-4 - 3030116

<https://www.phoenixcontact.com/gb/products/3030116>



Plug-in bridge, pitch: 4.2 mm, color: red

 Max. current carrying capacity: 17.5 A


Plug-in bridge

Plug-in bridge - FBS 2-4 BU - 3030117

<https://www.phoenixcontact.com/gb/products/3030117>



Plug-in bridge, pitch: 4.2 mm, color: blue

 Max. current carrying capacity: 17.5 A

Distribution block - PTFIX 6X1,5-NS15A BU

3002919

<https://www.phoenixcontact.com/gb/products/3002919>

Plug-in bridge

Plug-in bridge - FBS 2-4 GY - 3030118

<https://www.phoenixcontact.com/gb/products/3030118>



Plug-in bridge, pitch: 4.2 mm, color: gray

 Max. current carrying capacity: 17.5 A

Accessories

Accessories - MPS-MT 1-S4-B RD - 1982800

<https://www.phoenixcontact.com/gb/products/1982800>

Test plug terminal block, Accessories



Distribution block - PTFIX 6X1,5-NS15A BU

3002919

<https://www.phoenixcontact.com/gb/products/3002919>

Insulating sleeve

Insulating sleeve - ISH 1,5/0,2 - 3206131

<https://www.phoenixcontact.com/gb/products/3206131>



Insulating sleeve, color: white

Insulating sleeve

Insulating sleeve - ISH 1,5/0,5 - 3031034

<https://www.phoenixcontact.com/gb/products/3031034>



Insulating sleeve, color: gray

Distribution block - PTFIX 6X1,5-NS15A BU



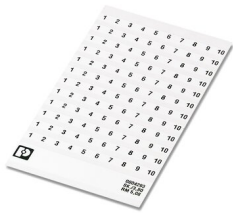
3002919

<https://www.phoenixcontact.com/gb/products/3002919>

Marker card

Marker card - SK 3,8 REEL P4,15 WH CUS - 0825990

<https://www.phoenixcontact.com/gb/products/0825990>



Marker card, can be ordered: by card, white, labeled according to customer specifications, mounting type: adhesive, for terminal block width: 4.15 mm, lettering field size: continuous x 3.8 mm

Marker strip

Marker strip - TML (EX3,8)R - 0801837

<https://www.phoenixcontact.com/gb/products/0801837>



Marker strip, Roll, white, unlabeled, can be labeled with: THERMOMARK E.300 (D)/600 (D), THERMOMARK ROLL 2.0, THERMOMARK ROLL, THERMOMARK ROLL X1, THERMOMARK ROLLMASTER 300/600, THERMOMARK X1.2, mounting type: adhesive, for terminal block width: 30000 mm, lettering field size: 30000 x 3.8 mm, Number of individual labels: 12

Distribution block - PTFIX 6X1,5-NS15A BU

3002919

<https://www.phoenixcontact.com/gb/products/3002919>

Marker strip

Marker strip - TML (104X3,8)R - 0801833

<https://www.phoenixcontact.com/gb/products/0801833>



Marker strip, Roll, white, unlabeled, can be labeled with: THERMOMARK E.300 (D)/600 (D), THERMOMARK ROLL 2.0, THERMOMARK ROLL, THERMOMARK ROLL X1, THERMOMARK ROLLMASTER 300/600, THERMOMARK X1.2, mounting type: adhesive, for terminal block width: 104 mm, lettering field size: 104 x 3.8 mm, Number of individual labels: 2500

Marker strip

Marker strip - TML (104X2,8)R - 0801832

<https://www.phoenixcontact.com/gb/products/0801832>



Marker strip, Roll, white, unlabeled, can be labeled with: THERMOMARK E.300 (D)/600 (D), THERMOMARK ROLL 2.0, THERMOMARK ROLL, THERMOMARK ROLL X1, THERMOMARK ROLLMASTER 300/600, THERMOMARK X1.2, mounting type: adhesive, for terminal block width: 104 mm, lettering field size: 104 x 2.8 mm, Number of individual labels: 2500

Distribution block - PTFIX 6X1,5-NS15A BU

3002919

<https://www.phoenixcontact.com/gb/products/3002919>

Marker strip

Marker strip - TML (EX2,8)R - 0801836

<https://www.phoenixcontact.com/gb/products/0801836>

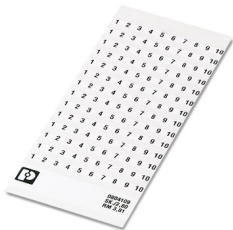


Marker strip, Roll, white, unlabeled, can be labeled with: THERMOMARK E.300 (D)/600 (D), THERMOMARK ROLL 2.0, THERMOMARK ROLL, THERMOMARK ROLL X1, THERMOMARK ROLLMASTER 300/600, THERMOMARK X1.2, mounting type: adhesive, for terminal block width: 30000 mm, lettering field size: 30000 x 2.8 mm, Number of individual labels: 14

Marker card

Marker card - SK 2,8 REEL P4,15 WH CUS - 8199987

<https://www.phoenixcontact.com/gb/products/8199987>



Marker card, can be ordered: by card, white, labeled according to customer specifications, mounting type: adhesive, for terminal block width: 4.15 mm, lettering field size: continuous x 2.8 mm

Distribution block - PTFIX 6X1,5-NS15A BU



3002919

<https://www.phoenixcontact.com/gb/products/3002919>

Marker for terminal blocks

Marker for terminal blocks - US-TML (104X3,8) - 0830768

<https://www.phoenixcontact.com/gb/products/0830768>



Marker for terminal blocks, Card, white, unlabeled, can be labeled with: BLUEMARK ID COLOR, BLUEMARK ID, THERMOMARK PRIME, THERMOMARK CARD 2.0, THERMOMARK CARD, mounting type: adhesive, lettering field size: 104 x 3.8 mm, Number of individual labels: 22

Marker for terminal blocks

Marker for terminal blocks - US-TML (104X2,8) - 0830767

<https://www.phoenixcontact.com/gb/products/0830767>



Marker for terminal blocks, Card, white, unlabeled, can be labeled with: BLUEMARK ID COLOR, BLUEMARK ID, THERMOMARK PRIME, THERMOMARK CARD 2.0, THERMOMARK CARD, mounting type: adhesive, lettering field size: 104 x 2.8 mm, Number of individual labels: 26

Distribution block - PTFIX 6X1,5-NS15A BU



3002919

<https://www.phoenixcontact.com/gb/products/3002919>

Marker card

Marker card - SK U/3,8 WH:UNBEDRUCKT - 0803906

<https://www.phoenixcontact.com/gb/products/0803906>



Marker card, Sheet, white, unlabeled, can be labeled with: PLOTMARK, CMS-P1-PLOTTER, Office printing systems, mounting type: adhesive, for terminal block width: 210 mm, lettering field size: 186 x 3.8 mm, Number of individual labels: 1440

Marker card

Marker card - SK U/2,8 WH:UNBEDRUCKT - 0803883

<https://www.phoenixcontact.com/gb/products/0803883>



Marker card, Sheet, white, unlabeled, can be labeled with: PLOTMARK, CMS-P1-PLOTTER, Office printing systems, mounting type: adhesive, for terminal block width: 210 mm, lettering field size: 186 x 2.8 mm, Number of individual labels: 3600

Distribution block - PTFIX 6X1,5-NS15A BU



3002919

<https://www.phoenixcontact.com/gb/products/3002919>

Label

Label - MM-TML (EX3,8)R C1 WH/BK - 1092026

<https://www.phoenixcontact.com/gb/products/1092026>



Label, Roll, white/black, unlabeled, can be labeled with: THERMOFOX, THERMOMARK GO, THERMOMARK GO.K, mounting type: adhesive, lettering field size: continuous x 2.8 mm

Phoenix Contact 2022 © - all rights reserved

<https://www.phoenixcontact.com>

PHOENIX CONTACT Ltd

Halesfield 13, Telford

Shropshire, TF7 4PG

01952 681700

info@phoenixcontact.co.uk