


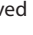


PCB TERMINAL BLOCKS

5.08mm Pitch Pluggable Rising Clamp Terminal with Screw Flanges

- 2-20 pole solid block
- Pluggable male-female connectors
- Screw Flanges
- Horizontal female plug style
- Polarised mouldings
- Moulded in green UL94-V0 flame retardant PA
- Professional rising clamp terminals
- 0.2 to 2mm² (28 to 14 AWG)
- Anti solder wicking
- Captive screws
- Guided pin alignment
-     oved

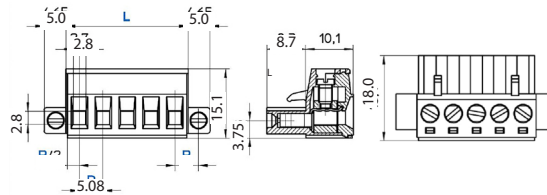
SPECIFICATION	
Rating	20A/450V UL=15A/300V, VDE&IMQ=20A/450V
Dielectric strength	0.5kV
Impulse withstand voltage	2kV
Working temperature	-40°C to 105°C
Moulding	UL94-V0 flame retardant PA
Pin/terminal	Copper alloy, NI & SN
Rising clamp	Copper alloy, NI & SN
Screw/torque	M3 steel zinc plated, 0.5Nm
Recommended PCB hole size	ø1.7mm

Female connector

TYPE NO.	POLES	LENGTH
CTB9208/2FL	2	20mm
CTB9208/3FL	3	25mm
CTB9208/4FL	4	30mm
CTB9208/5FL	5	35mm
CTB9208/6FL	6	40mm
CTB9208/7FL	7	45mm
CTB9208/8FL	8	50mm
CTB9208/9FL	9	55mm
CTB9208/10FL	10	60mm
CTB9208/11FL	11	65mm
CTB9208/12FL	12	70mm
CTB9208/13FL	13	75mm

TYPE NO.	POLES	LENGTH
CTB9208/14FL	14	80mm
CTB9208/15FL	15	85mm
CTB9208/16FL	16	90mm
CTB9208/17FL	17	95mm
CTB9208/18FL	18	100mm
CTB9208/19FL	19	105mm
CTB9208/20FL	20	110mm
CTB9208/21FL	21	115mm
CTB9208/22FL	22	120mm

CTB9208/ FL



+44 (0)1638 716101
info@camdenboss.com
www.camdenboss.com

We operate a constant improvement policy, our products are subject to change without notice.

Ver 1.2



- PCB TERMINAL BLOCKS
- INTER-CONNECTION
- FUSES & FUSE-HOLDERS
- LEDs & INDICATORS
- MINIATURE SWITCHES
- LIMIT & SAFETY SWITCHES
- CONTROL PRODUCTS
- INTERFACE MODULES & SUPPORTS
- RELAY BASES
- DIN RAIL ENCLOSURES
- BATTERIES
- SOLAR PANELS
- TRANSFORMERS