



Figure similar

SIGNAL COLUMN DIAMETER 50 MM; SINGLE ELEMENT IP54; FLASHING LIGHT ELEMENT, LED YELLOW 230 V AC/DC

| General technical data: | | |
|---|----|-------------|
| product brand name | | SIRIUS |
| Product component Light source | | Yes |
| Design of the optical signal | | blinklight |
| Type of voltage of the operating voltage | | AC |
| Operating voltage | | |
| • 1 with AC at 50 Hz Rated value | V | 230 |
| • 1 with AC at 60 Hz Rated value | V | 230 |
| Equipment marking acc. to DIN EN 61346-2 | | P |
| Mechanical data: | | |
| Outer diameter of the signal column element | mm | 50 |
| Lamp: | | |
| Type of light source | | LED |
| Ambient conditions: | | |
| Ambient temperature during operation | °C | -20 ... +50 |
| Protection class IP | | IP54 |
| Height | mm | 67 |
| Width | mm | 52 |
| Certificates/ approvals: | | |

| | | | |
|--------------------------|-----|---------------------------|-------------------|
| General Product Approval | EMC | Declaration of Conformity | Shipping Approval |
|--------------------------|-----|---------------------------|-------------------|



Further information

Information- and Downloadcenter (Catalogs, Brochures,...)

<http://www.siemens.com/industrial-controls/catalogs>

Industry Mall (Online ordering system)

<http://www.siemens.com/industrymall>

Cax online generator

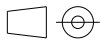
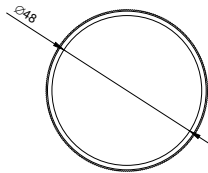
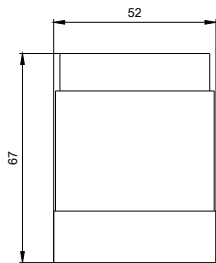
<http://support.automation.siemens.com/WW/CAXorder/default.aspx?lang=en&mlfb=8WD42505BD>

Service&Support (Manuals, Certificates, Characteristics, FAQs,...)

<https://support.industry.siemens.com/cs/ww/en/ps/8WD42505BD>

Image database (product images, 2D dimension drawings, 3D models, device circuit diagrams, EPLAN macros, ...)

http://www.automation.siemens.com/bilddb/cax_de.aspx?mlfb=8WD42505BD&lang=en



W8 4444: 8WD42-..._ALL
W8 8611:

last modified:

15.01.2015