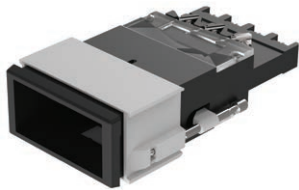


Data sheet Actuator.

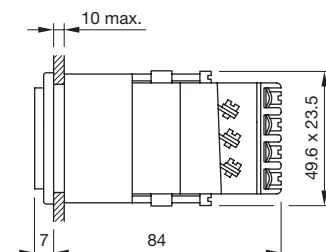
Part No.: 03-616.011

Technical data

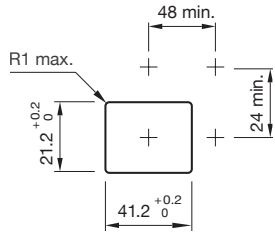


Design	flush
Mounting cut-out	41.2 mm x 21.2 mm
Terminal	Screw terminal
Operating Travel	ca. 5 mm
Lens illumination	illuminative
Front bezel colour	Black
Front bezel material	Plastic
Housing colour	Black
Housing material	Plastic
Weight	0.07 kg
IP Protection	IP40 front side, IP65 with spray cover, according to IEC 60529
Contact material	Silver
Switching action	Momentary
Switching system	Snap-action switching element
Switching rating	400 V @ 10 A
Contacts	1 C
Operating temperature	- 25 °C ... + 55 °C, mounted as a block, make sure the heat can escape freely
Approbations	CB (IEC 61058-1), CSA, DNV, UL
Operating force	6 ... 12 N
Mechanical lifetime	2 Mio. cycles of operation
Tightening torque	Fixing sleeve max. 0.2 Nm, Screw terminal 0.8 Nm
Hints	<ul style="list-style-type: none"> ▪ Has two independent lamp bases ▪ For LED element fitting information see Application guidelines, LED polarity ▪ The luminous intensity stated is for when used with DC

Dimension drawings



Mounting cut-outs



Wiring diagrams

