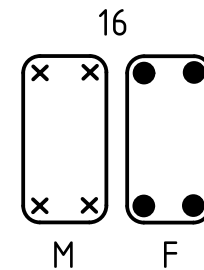
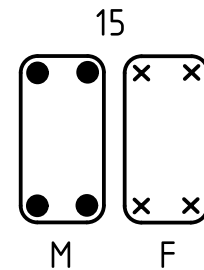
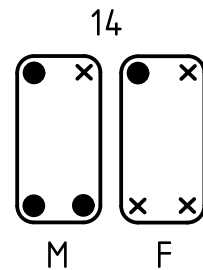
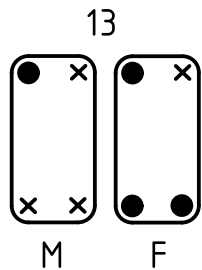
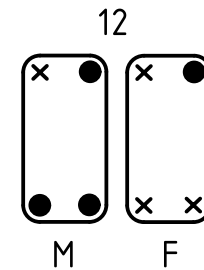
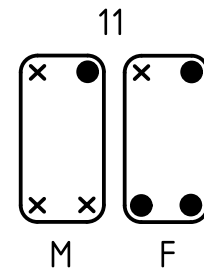
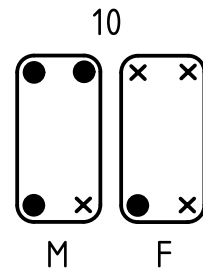
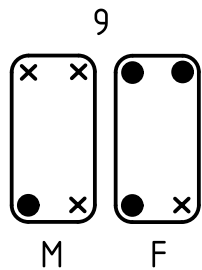
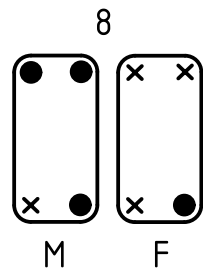
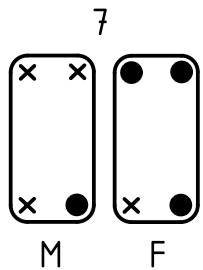
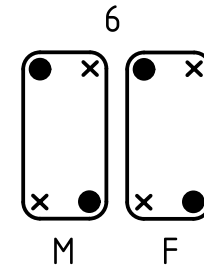
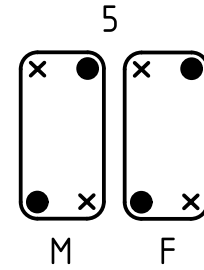
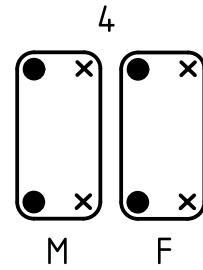
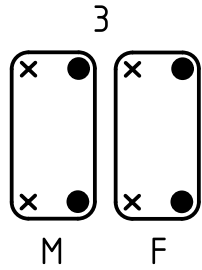
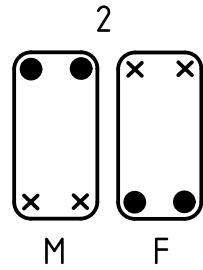
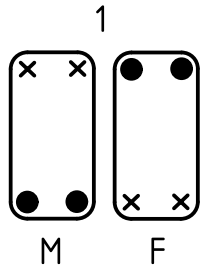


arrangement of pins and bushes see page 2 and 3

All Dimensions in mm Original Size DIN A4		Scale 2:1	Free size tol.		Ref. Sub.
All rights reserved Department EL PD - DE		Created by FINKEV	Inspected by GERB	Standardisation TIEMANNA	Date 2015-09-07
HARTING Electric GmbH & Co. KG D-32339 Espelkamp		Title Han-Modular Fuehrungsstifte			State Final Release
09 14 000 9909 guide bush		Type TB Number 09 14 000 990X			Doc-Key / ECM-Nr. 100175794/UGD/003/B 500000093566
09 14 000 9908 guide pin					Rev. B Page 1/3
part number description					

coding system with guide pins and bushes

for hoods/housings with one frame or hinged frame



- F - frame or hinged frame for hoods
- M - frame or hinged frame for housings
- x - guide pins
- - guide bushes

	All rights reserved	Created by FINKEV	Inspected by GERB	Standardisation TIEMANNA	Date 2015-09-07	State Final Release	
	Department EL PD - DE	Title Han-Modular Fuehrungsstifte				Doc-Key / ECM-Nr. 100175794/UGD/003/B 500000093566	
HARTING Electric GmbH & Co. KG D-32339 Espelkamp		Type TB	Number 09 14 000 990X			Rev. B	Page 2/3

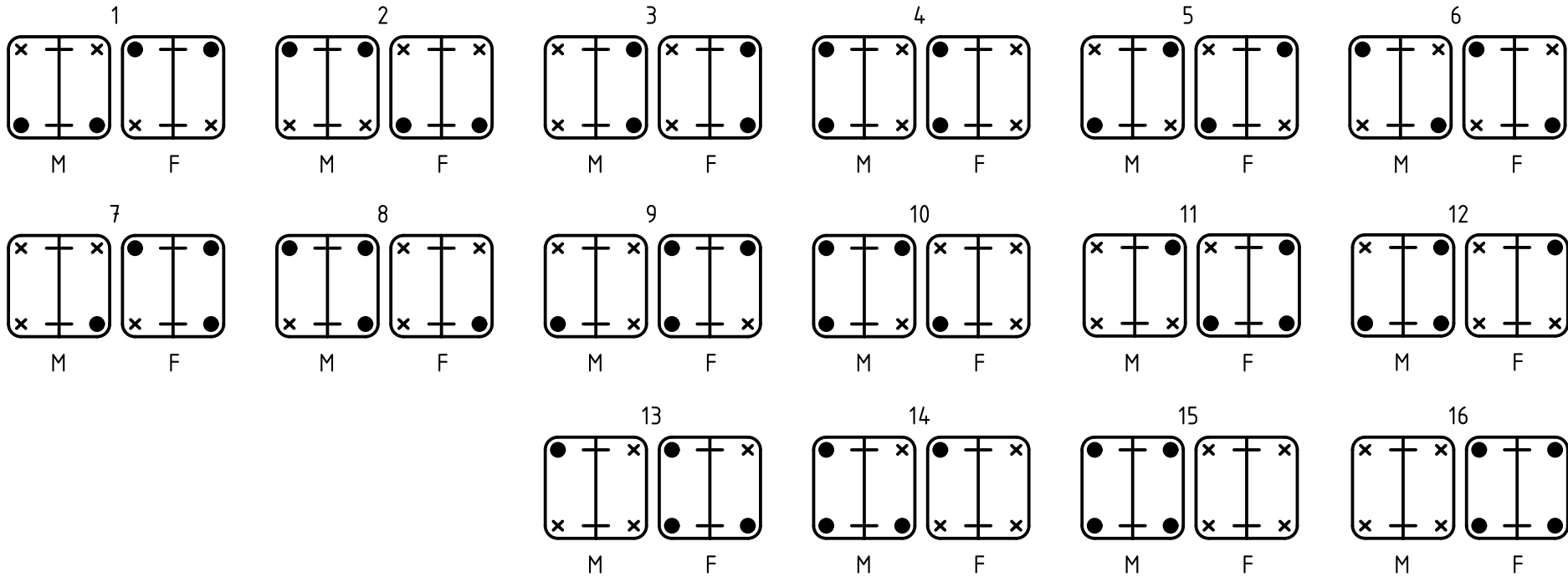
coding system with code pins
for hoods/housings with two frame or two hinged frame

A

B

C

D



- F - frame or hinged frame for hoods
- M - frame or hinged frame for housings
- × - guide pins
- - guide bushes
- - mounting screw

	All rights reserved	Created by FINKEV	Inspected by GERB	Standardisation TIEMANNA	Date 2015-09-07	State Final Release	
	Department EL PD - DE	Title Han-Modular Fuehrungsstifte				Doc-Key / ECM-Nr. 100175794/UGD/003/B 500000093566	
HARTING Electric GmbH & Co. KG D-32339 Espelkamp		Type TB	Number 09 14 000 990X			Rev. B	Page 3/3