

Proportional pressure reducing valve, pilot operated, with on-board elec- tronics (OBE) and position feedback

RE 29199/07.05

1/12

Type DREBE10Z

Nominal size 10
Unit series 1X
Maximum working pressure A, B, X 315 bar, Y 2 bar
Maximum flow rate Q_{nom} 120 l/min



List of contents

Contents	Page
Features	1
Ordering data	2
Preferred types, symbol	2
Function, sectional diagram	3
Technical data	4 to 6
On-board trigger electronics	7 and 8
Characteristic curves	9
Unit dimensions	10

Features

- Pilot operated valves with position feedback and on-board electronics for reducing system pressure (pilot oil internal only, with relief port X)
- Adjustable through the position of the armature against the compression spring
- With position control, minimal hysteresis <1%, rapid response times, see Technical Data
- Pressure limitation to a safe level even with faulty electronics (solenoid current $I > I_{\text{max}}$)
- For subplate attachment, mounting hole configuration to ISO 5781-AG-06-2-A
Subplates as per catalog sheet RE 45055 (order separately)
- Plug-in connector to DIN 43563-AM6, see catalog sheet RE 08008 (order separately)
- Data for the on-board trigger electronics
 - Complies with CE, EMC directives EN 61000-6-2: 2002-08 and EN 61000-6-3: 2002-08
 - $U_{\text{B}} = 24 V_{\text{nom}}$ DC
 - Electrical connection 6P+PE
 - Signal actuation
 - Standard 0...+10 V (A1)
 - Valve curve calibrated at the factory

Ordering data

DREB	E	10	Z	-1X/	XY	M	G24	K31	A1	M	*
Proportional pressure reducing valve with inductive position transducer on the cone			Further information in plain text								
With on-board electronics = E		M = NBR seals, suitable for mineral oils (HL, HLP) to DIN 51524									
Nominal size = 10		Interface for trigger electronics* A1 = Setpoint input 0...+10 V									
Mounting hole configuration to ISO 5781-AG-06-2-A = Z		K31 = Electrical connection without plug-in connector, with unit plug to DIN 43563-AM6 Order plug-in connector separately									
Unit series 10 to 19 (10 to 19: installation and connection dimensions unchanged) = 1X		G24 = Voltage supply of trigger electronics 24 V DC									
Max. pressure stage		M = Without non-return valve									
up to 180 bar = 180											
up to 315 bar = 315											
Relief port X											
Pilot oil port Y = XY											

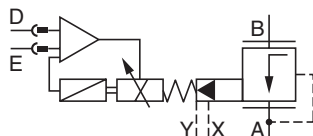
* Variant "F1" (4...20 mA version) available on request

Preferred types

TypeA1 (0...+10 V)	Material Number
DREBE10Z-1X/180XYMG24K31A1M	0 811 402 155
DREBE10Z-1X/315XYMG24K31A1M	0 811 402 152

Symbol

For on-board electronics



Function, sectional diagram

General

Type DREBE10Z proportional pressure reducing valves are pilot operated and are used to reduce system pressure.

They are actuated by means of a position-controlled proportional solenoid with on-board electronics.

The valve body contains a logic element (spool valve) of the "normally open" type. This is pilot operated and is in conical seat design.

Basic principle

To adjust the system pressure, a setpoint is set in the trigger electronics. Based on this setpoint, the electronics control the position-controlled solenoid.

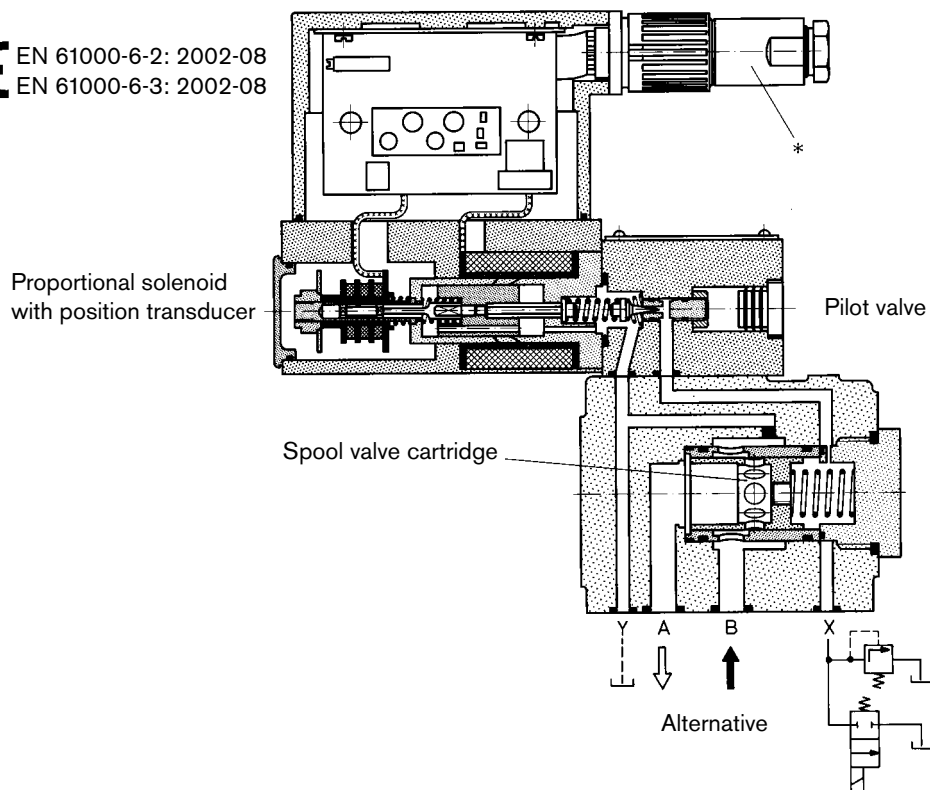
The proportional solenoid maintains its position against a spring force, which is proportionate to the system pressure.

The pilot stage is supplied with pilot oil at a flow rate of $< 0.8 \text{ l/min}$ through a bore. The " p_{max} " pressure stage is determined by the cone and seating bore configuration.

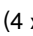

Pressure limitation for maximum safety

If a fault occurs in the electronics, so that the solenoid current (I_{max}) would exceed its specified level in an uncontrolled manner, the pressure cannot rise above the level determined by the maximum spring force.

CE EN 61000-6-2: 2002-08
EN 61000-6-3: 2002-08



Accessories

Type		Material Number
(4 x)  ISO 4762-M10x80-10.9	Cheese-head bolts	2 910 151 309
* 	Plug-in connectors 6P+PE, see also RE 08008	KS
		KS
		MS
		MS
		KS 90°
		1 834 482 022
		1 834 482 026
		1 834 482 023
		1 834 482 024
		1 834 484 252

Testing and service equipment

Test box type VT-PE-TB3, see RE 30065

Measuring adapter 6P+PE type VT-PA-2, see RE 30068


Technical data

General		
Construction	Pilot stage	Poppet valve
	Main stage	Pressure reducing valve
	Valve cartridge	Spool valve, normally open
Actuation		Proportional solenoid with position control and OBE
Connection type		Subplate, mounting hole configuration NG10 (ISO 5781-AG-06-2-A)
Mounting position		Optional
Ambient temperature range	°C	-20...+50
Weight	kg	7.8
Vibration resistance, test condition		Max. 25 g, shaken in 3 dimensions (24 h)

Hydraulic (measured with HLP 46, $\vartheta_{oil} = 40\text{ °C} \pm 5\text{ °C}$)

Pressure fluid		Hydraulic oil to DIN 51524...535, other fluids after prior consultation	
Viscosity range	recommended mm ² /s	20...100	
	max. permitted mm ² /s	10...800	
Pressure fluid temperature range	°C	-20...+70	
Maximum permitted degree of contamination of pressure fluid Purity class to ISO 4406 (c)		Class 18/16/13 ¹⁾	
Direction of flow		See symbol	
Max. set pressure (at $Q_{min} = 1\text{ l/min}$)	bar	180	315
Minimum pressure (at $Q_{min} = 1\text{ l/min}$)	bar	6	8
Max. mechanical pressure limitation level, e.g. when solenoid current $I > I_{max}$	bar	< 190	< 325
Max. working pressure	bar	Port A, B: 315	
		Port Y: ≤ 2 external pilot oil drain	
		Port X: 315 relief port	
Internal pilot oil flow	l/min	≤ 0.8	
Max. flow	l/min	120 for Q_{max} , see Characteristic Curves	

Static/Dynamic

Hysteresis	%	≤ 1	
Manufacturing tolerance for p_{max}	%	≤ ±5, see Characteristic Curves	
Response time 100% signal change	ms	≈ 80 dependent on dead volume or system volume	
Thermal drift		< 1% at $\Delta T = 40\text{ °C}$	
Conformity		 EN 61000-6-2: 2002-08 EN 61000-6-3: 2002-08	

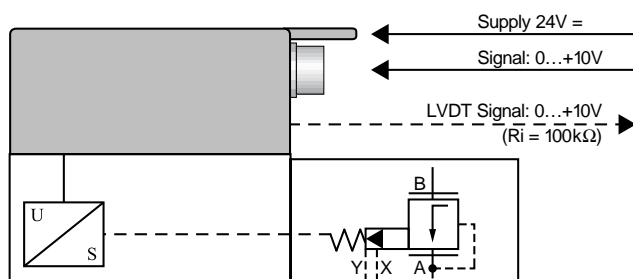
¹⁾ The purity classes stated for the components must be complied with in hydraulic systems. Effective filtration prevents problems and also extends the service life of components. For a selection of filters, see catalog sheets RE 50070, RE 50076 and RE 50081.

Technical data

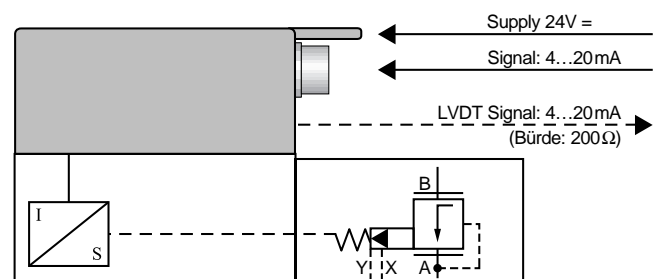
Electrical, trigger electronics integrated in valve		
Cyclic duration factor	%	100%
Degree of protection		IP 65 to DIN 40050 and IEC 14434/5
Connection		Plug-in connector 6P+PE, DIN 43563
Supply voltage		24 V DC _{nom}
Terminal A:		Min. 21 V DC/max. 40 V DC
Terminal B: 0 V		Ripple max. 2 V DC
Power consumption		Solenoid \square 45 mm = 40 VA max.
External fuse		2.5 A _F
Input, "standard" version	A1	Differential amplifier, $R_i = 100 \text{ k}\Omega$
Terminal D: U_E		0...+10 V
Terminal E:		0 V
Input, "mA signal" version	F1*	Burden, $R_{sh} = 200 \Omega$
Terminal D: I_{D-E}		4...20 mA
Terminal E: I_{D-E}		Current loop I_{D-E} feedback
Max. voltage to differential inputs over 0 V		$D \rightarrow B$ } max. 18 V= $E \rightarrow B$ }
Test signal, "standard" version	A1	LVDT
Terminal F: U_{Test}		0...+10 V
Terminal C:		Reference 0 V
Test signal, "mA signal" version	F1*	LVDT signal 4...20 mA at external load 200...500 Ω max.
Terminal F: I_{F-C}		4...20 mA output
Terminal C: I_{F-C}		Current loop I_{F-C} feedback
Safety earth conductor and shield		See pin assignment (installation in conformity with CE)
Recommended cable		See pin assignment up to 20 m 7x0.75 mm ² up to 40 m 7x1 mm ²
Calibration		Calibrated at the factory, see valve curve

* Variant "F1" (4...20 mA version) available on request

Version A1: Standard

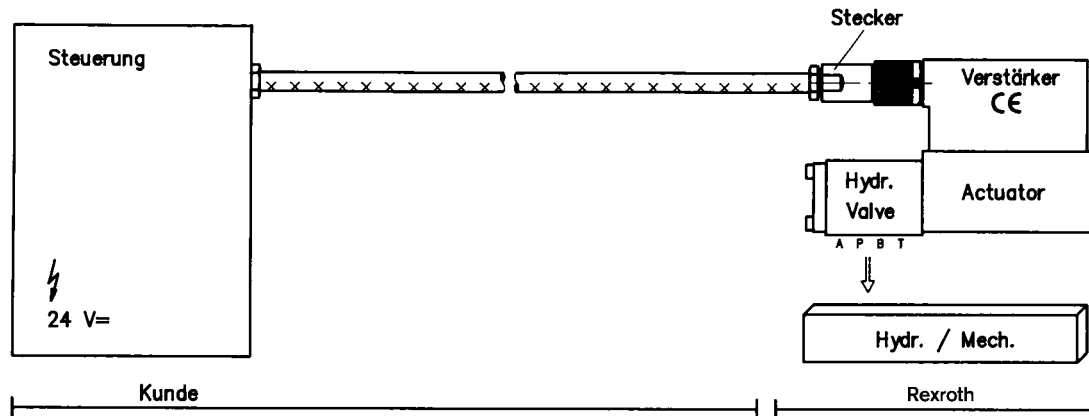


* Version F1: mA signal



Connection

For electrical data, see page 5 and
Operating Instructions 1 819 929 083



Technical notes for the cable

- Version:**
- Multi-wire cable
 - Extra-finely stranded wire to VDE 0295, Class 6
 - Safety earth conductor, green/yellow
 - Cu braided shield
- Type:**
- e.g. Ölflex-FD 855 CP (from Lappkabel company)
- No. of wires:**
- Determined by type of valve, plug type and signal assignment
- Cable Ø:**
- 0.75 mm² up to 20 m long
 - 1.0 mm² up to 40 m long
- Outside Ø:**
- 9.4...11.8 mm – Pg 11
 - 12.7...13.5 mm – Pg 16

Important

Power supply 24 V DC nom.,
if voltage drops below 18 V DC, rapid shutdown resembling
“Enable OFF” takes place internally.

In addition, with the “mA signal” version:

$I_{D-E} \geq 3 \text{ mA}$ – valve is active

$I_{D-E} \leq 2 \text{ mA}$ – valve is deactivated.

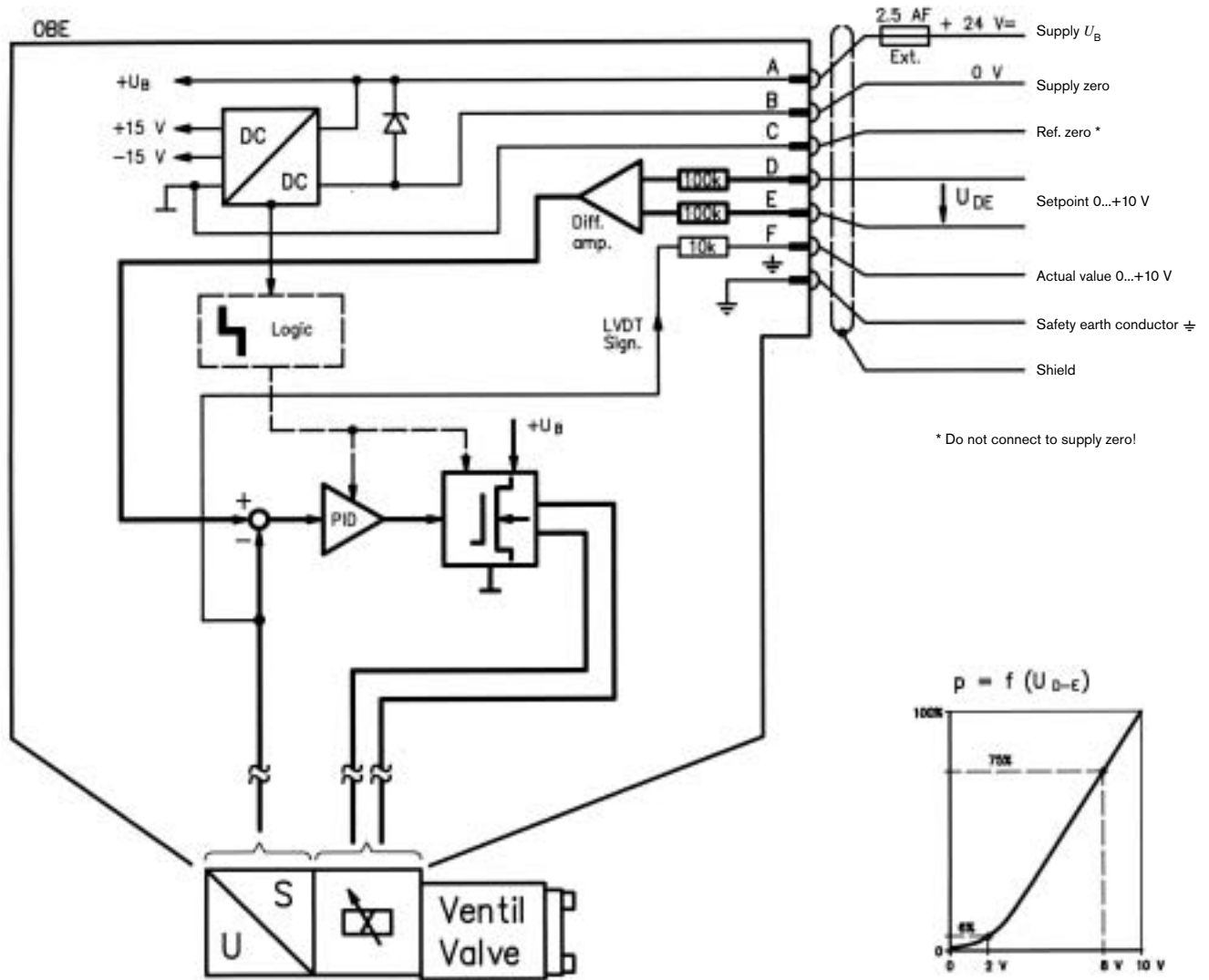
Electrical signals emitted via the trigger electronics (e.g. actual values) must not be used to shut down safety-relevant machine functions!

(See also European Standard, “Technical Safety Requirements for Fluid-Powered Systems and Components – Hydraulics”, EN 982).

On-board trigger electronics

Circuit diagram/pin assignment

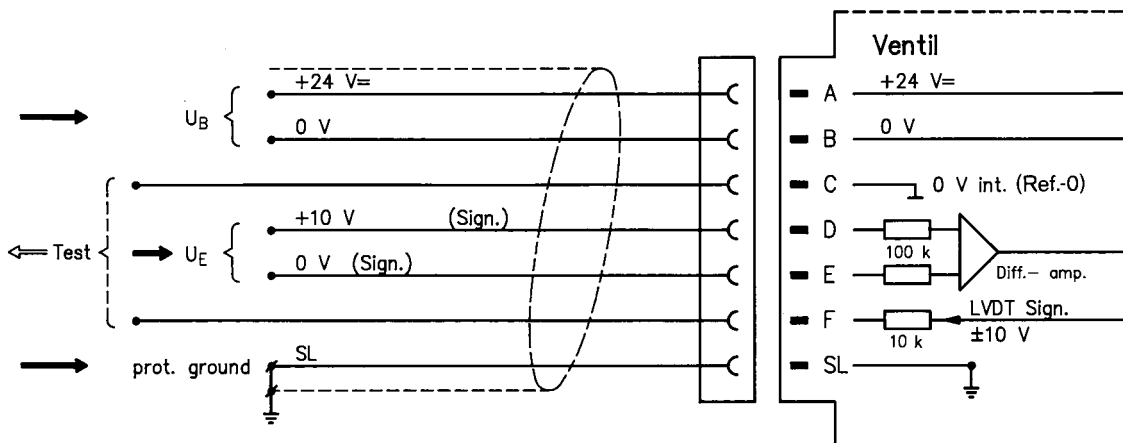
Version A1: U_{D-E} 0...+10 V



Pin assignment

Version A1: U_{D-E} 0...+10 V

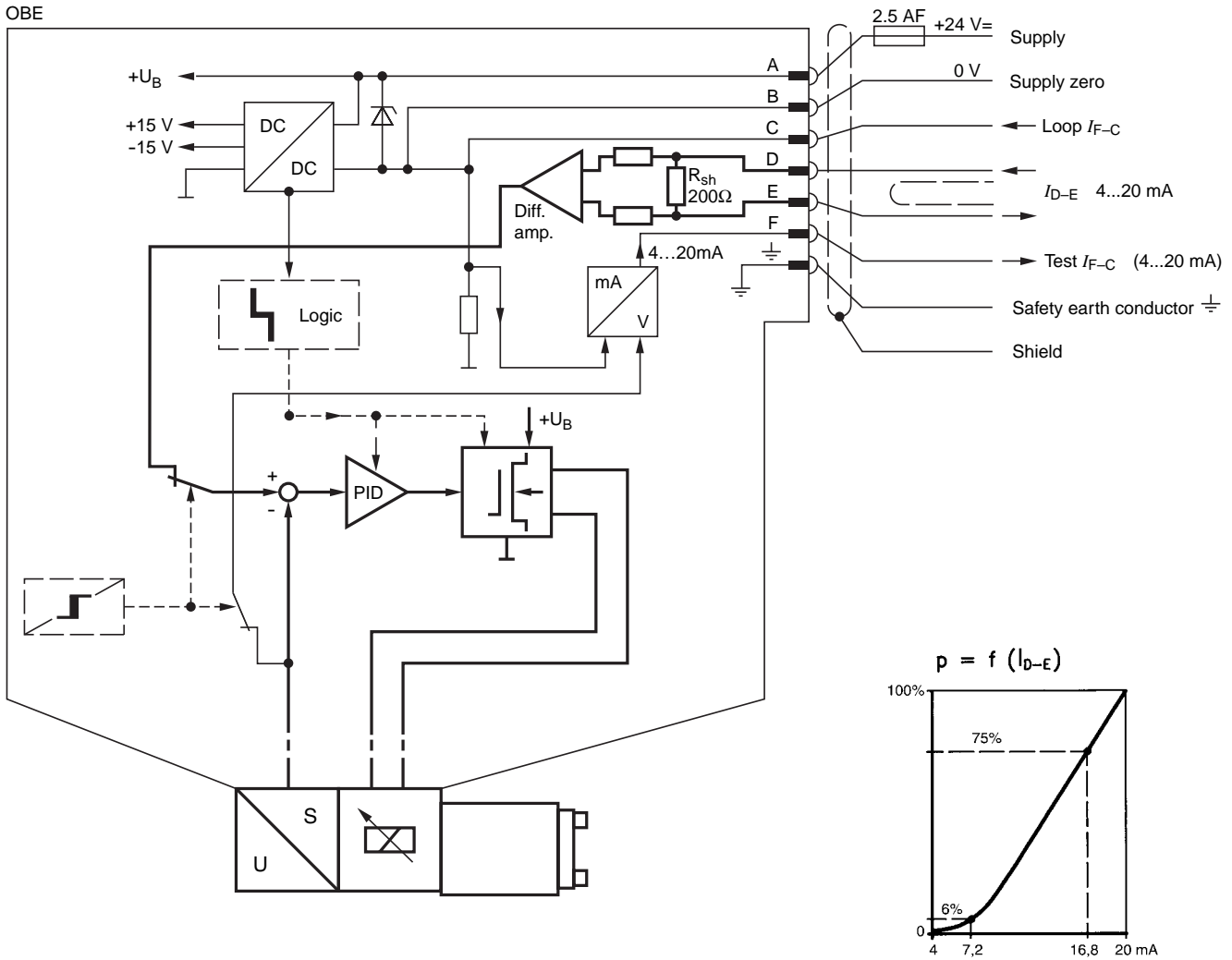
($R_i = 100 \text{ k}\Omega$)



On-board trigger electronics

Circuit diagram/pin assignment

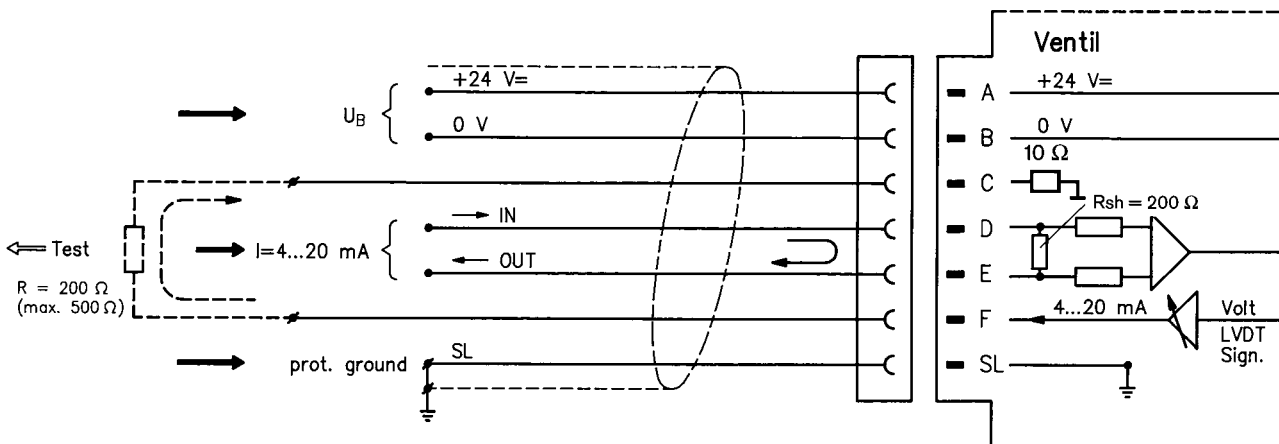
Version F1: I_{D-E} 4...20 mA



Pin assignment 6P+PE

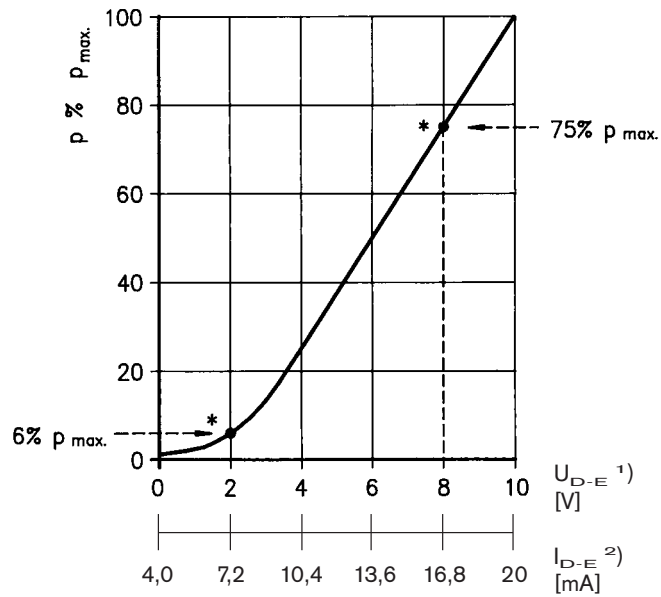
Version F1: I_{D-E} 4...20 mA

($R_{sh} = 200 \text{ k}\Omega$)

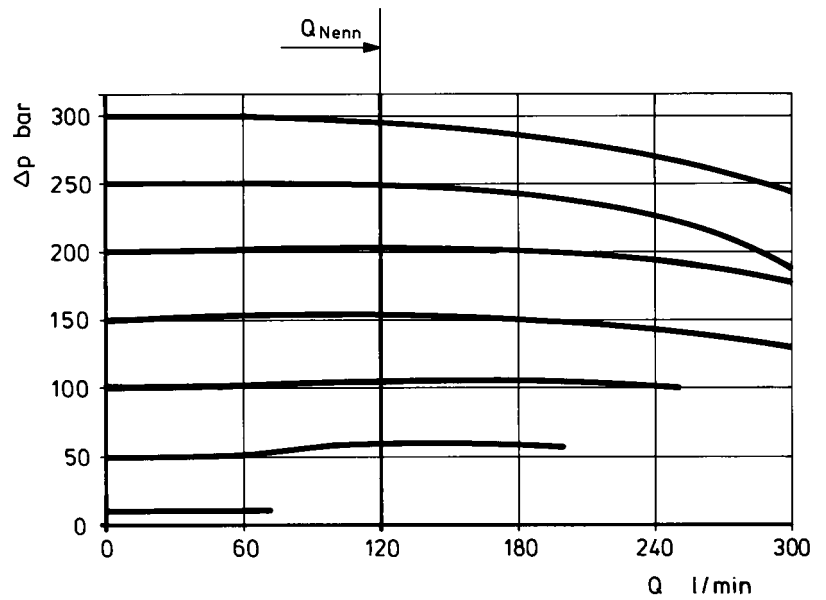
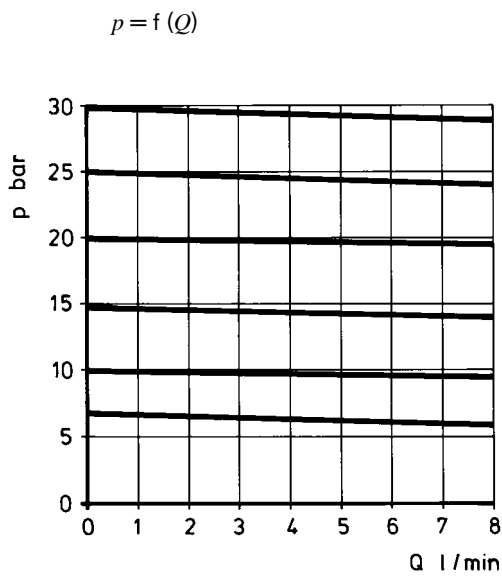


Characteristic curves (measured with HLP 46, $\vartheta_{oil} = 40^\circ\text{C} \pm 5^\circ\text{C}$)

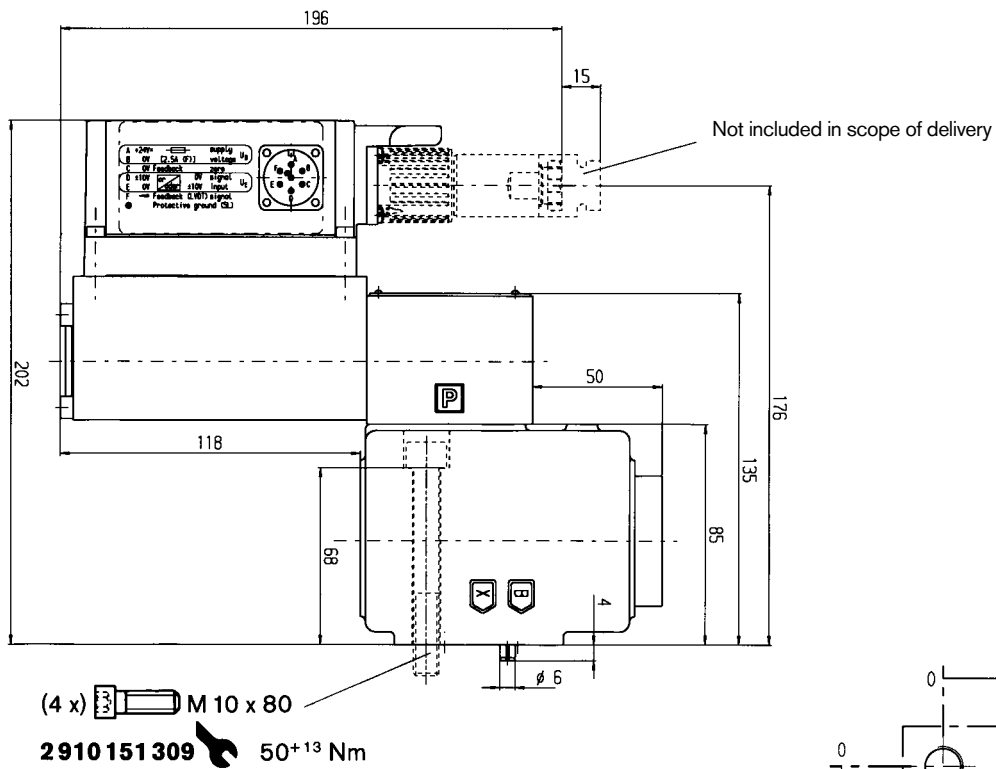
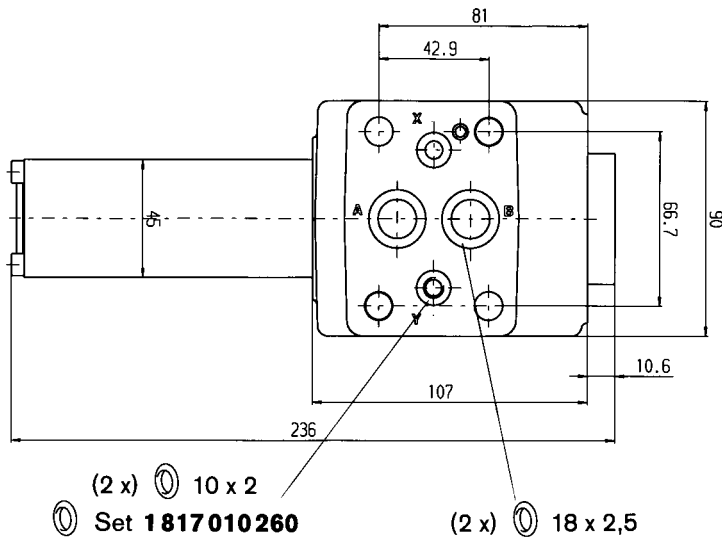
Pressure in port A as a function of the setpoint



Pressure in port A as a function of the main stage nominal flow rate



Unit dimensions (nominal dimensions in mm)

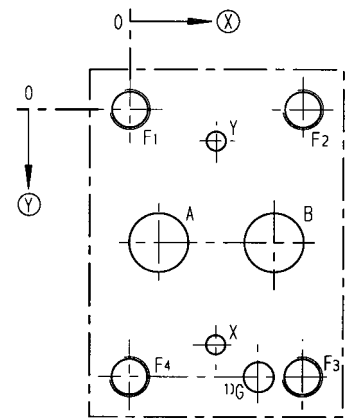
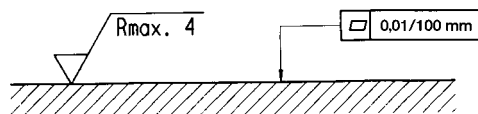


Mounting hole configuration: NG10 (ISO 5781-AG-06-2-A)

For subplates see catalog sheet RE 45055

Required surface quality of mating component

- 1) Deviates from standard
- 2) Thread depth:
 Ferrous metal 1.5 x \varnothing *
 Non-ferrous 2 x \varnothing
- * NG10 min. 10.5 mm



	A	B	X	Y	G	F ₁	F ₂	F ₃	F ₄
\otimes	7,2	35,8	21,4	21,4	31,8	0	42,9	42,9	0
\odot	33,35	33,35	58,7	7,9	66,7	0	0	66,7	66,7
\varnothing	14,7	14,7	4,8	4,8	7,5	M10 ²⁾	M10 ²⁾	M10 ²⁾	M10 ²⁾

Notes

Notes
