

# Large Size 3 Port Solenoid Valve

## Series VP3145/3165/3185

### Rubber Seal



#### Large flow capacity, small exhaust resistance

(Refer to "Flow Characteristic" table.)

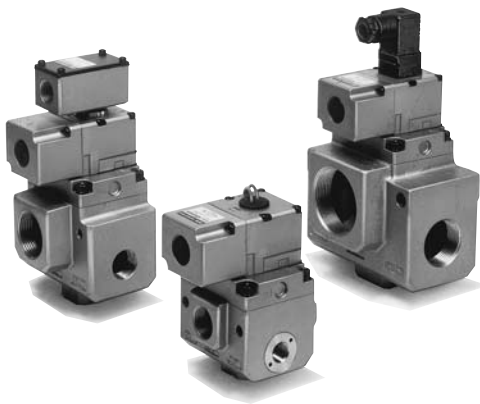
#### Easy conversion to N.C. or N.O.

Function plate makes it possible to use as a N.C. or N.O. valve with the port unchanged.

#### Possible to use in vacuum or under low pressures

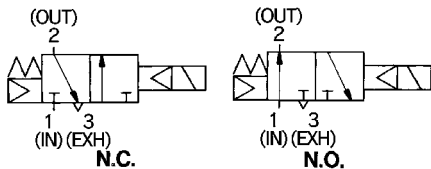
Vacuum: Up to 101.2 kPa  
Low pressure: 0 to 0.2 MPa

#### Free mounting orientation

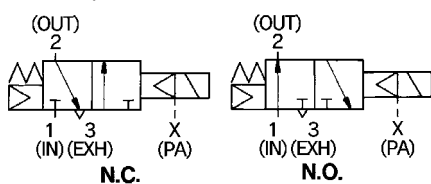


#### JIS Symbol

Internal pilot  
<Standard>



External pilot



Note) N.O. valve operates properly only when appropriate pressure is applied to the pilot.



**Made to Order**

(Refer to pages 1501 to 1503 for details.)

#### How to Order

**VP3 1 4 5 - 04 1 G A - - -**

Series VP 3 port solenoid valve

**Number of solenoids**

1	Single
---	--------

**Body size**

4	1/2
6	1
8	1 1/2

**Body type**

5	Body ported
---	-------------

**Valve option**

Nil	For general
V	For vacuum/low pressure

**Port size (IN, OUT port)**

Symbol	Port size Rc (Nominal size)	VP3145	VP3165	VP3185
03	3/8 (10A)	●		
04	1/2 (15A)	●		
06	3/4 (20A)	●	●	
10	1 (25A)		●	
12	1 1/4 (32A)		●	●
14	1 1/2 (40A)			●
20	2 (50A)			●

**Coil rated voltage**

1	100 VAC, 50/60 Hz
2	200 VAC, 50/60 Hz
3*	110 VAC, 50/60 Hz
4*	220 VAC, 50/60 Hz
5	24 VDC
6*	12 VDC
7*	240 VAC, 50/60 Hz
9*	Other

\* Option

**CE-compliant**

Nil	—
Q	CE-compliant*

\* Electrical entry: D/DL/DS/DZ only

**Thread type**

Nil	Rc
F	G
N	NPT
T	NPTF

**Pilot option**

Nil	Standard (Internal pilot)
1	External pilot

**Type of actuation**

A	N.C. (Normally closed)
B	N.O. (Normally open)

**Electrical entry**

G	Grommet
T	Conduit terminal
D	DIN terminal
TL*	Conduit terminal with indicator light
TS*	Conduit terminal with surge voltage suppressor
TZ*	Conduit terminal with light/surge voltage suppressor
DL*	DIN terminal with indicator light
DS*	DIN terminal with surge voltage suppressor
DZ*	DIN terminal with light/surge voltage suppressor

\* Option

#### How to Order Pilot Valve Assembly

**VT3113 - 00 1 G - - -**

**Coil rated voltage**

1	100 VAC, 50/60 Hz
2	200 VAC, 50/60 Hz
3*	110 VAC, 50/60 Hz
4*	220 VAC, 50/60 Hz
5	24 VDC
6*	12 VDC
7*	240 VAC, 50/60 Hz
9*	Other

\* Option

**Electrical entry**

G	Grommet
T	Conduit terminal
D	DIN terminal
TL*	Conduit terminal with indicator light
TS*	Conduit terminal with surge voltage suppressor
TZ*	Conduit terminal with light/surge voltage suppressor
DL*	DIN terminal with indicator light
DS*	DIN terminal with surge voltage suppressor
DZ*	DIN terminal with light/surge voltage suppressor

\* Option

**CE-compliant**

Nil	—
Q	CE-compliant*

\* Electrical entry: D/DL/DS/DZ only

SYJ

VQZ

VP

VG

VP3□