

**Fixed jaws with claws**  
incl. sliding block and screw

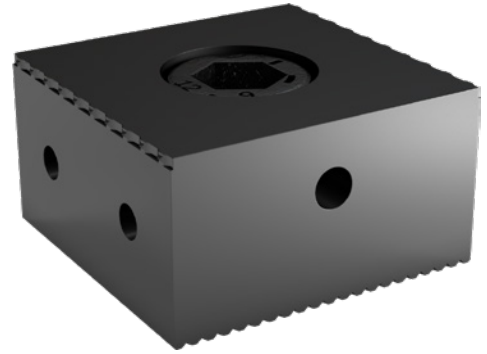


**Version**

- Fixed jaw with claws
- Attached using 14-mm T-sliding block with M12 thread

**Delivery**

1 pc. Fixed jaw with claws, incl. sliding block and screw



<b>Art. No.</b>	<b>28890 082</b>
<b>Taper clamp design</b>	With claw fasteners, Smooth
<b>Jaws width</b>	32 mm
<b>Jaws thickness</b>	22 mm
<b>Jaws height</b>	15 mm
<b>Fastening thread</b>	M8

**EAN-Code**

405029367395 1