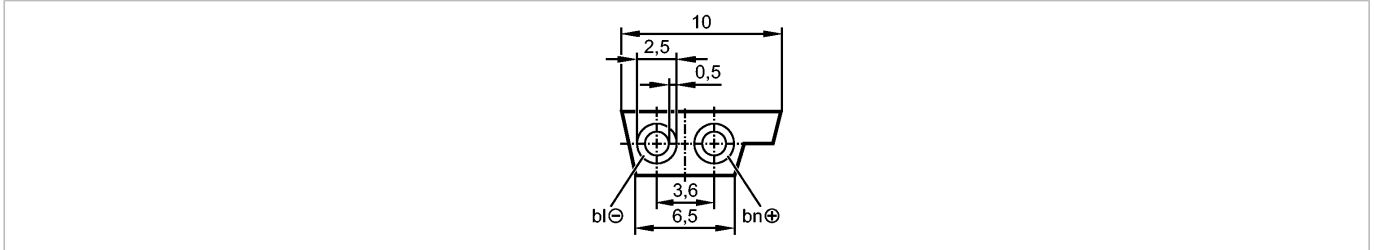




Flat cable 100 meter TPE ye

Bus system AS-Interface



Product characteristics

AS-i flat cable

for use in insulation displacement connector technology for FC lower parts and compact modules

Reverse polarity protection due to special shape

Electrical data

Electrical design

AS-i

Operating voltage [V]

26.5...31.6 DC (AS-i)

Environment

Ambient temperature [°C]

-40...105

Protection

IP 67

Mechanical data

Weight [kg]

7.642

Electrical connection

Connection

/ 100 m; 2 x 1.5 mm²

Material

TPE

Sheath colour

yellow

Remarks

Remarks

100 m supplied on a cable drum

Pack quantity [piece]

1