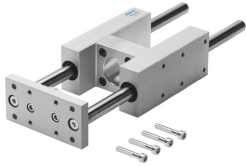


# Guide unit FENG-32-250-KF

Part number: 150289

FESTO



## Data sheet

Feature	Value
Size	32
Stroke	250 mm
Type code	FENG
Mounting position	Any
Guide	Recirculating ball bearing guide
Design	Guide
Explosion prevention and protection	Zone 22 (ATEX) Zone 21 (ATEX) Zone 2 (ATEX) Zone 1 (ATEX)
Ambient temperature	-20 °C ... 80 °C
Max. force F <sub>y</sub>	750 N
Max. force F <sub>y</sub> static	1020 N
Max. force F <sub>z</sub>	750 N
Max. force F <sub>z</sub> static	1020 N
Max. torque M <sub>x</sub>	28 Nm
Max. static moment M <sub>x</sub>	38 Nm
Max. torque M <sub>y</sub>	34 Nm
Max. static moment M <sub>y</sub>	46 Nm
Max. torque M <sub>z</sub>	34 Nm
Max. static moment M <sub>z</sub>	46 Nm
Displacement force	15 N
Product weight	1980 g
Type of mounting	With internal thread
Note on materials	RoHS-compliant Free of copper and PTFE
Material of guide component	Tempered steel
Housing material	Wrought aluminum alloy, anodized
Material of yoke plate	Wrought aluminum alloy, anodized