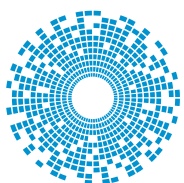
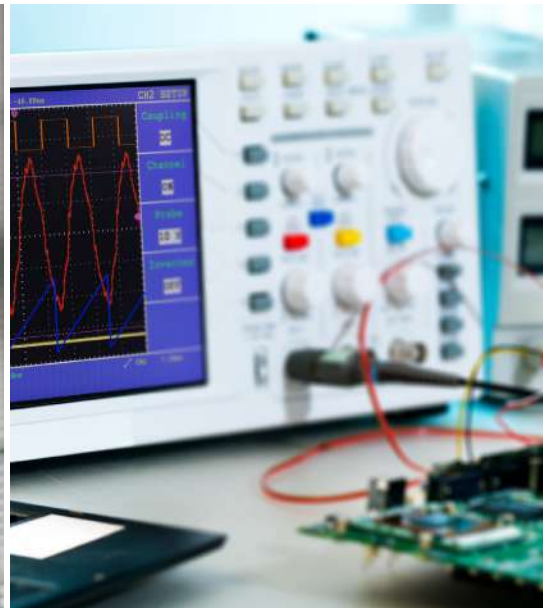


JOHNSON™

2.4mm Series Adapters & Connectors Catalog



cinch
CONNECTIVITY SOLUTIONS
a bel group

belfuse.com/cinch

Index

Connectors

- End Launch 3
- 2 Hole Flange 4
- 4 Hole Flange 5

Adapters

- Same Series 6
- Termination 7
- Between Series 8-9

2.4mm Connectors



End Launch Jack - Screw-On Type

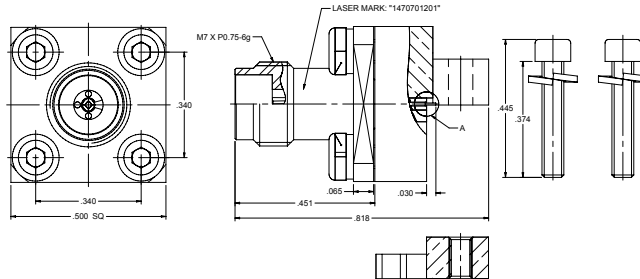
Stainless Steel/Passivated	Impedance	Max Frequency	VSWR
----------------------------	-----------	---------------	------

147-0701-201

50 Ohms

50GHz

Typical VSWR 1.20



End Launch Plug - Screw-On Type

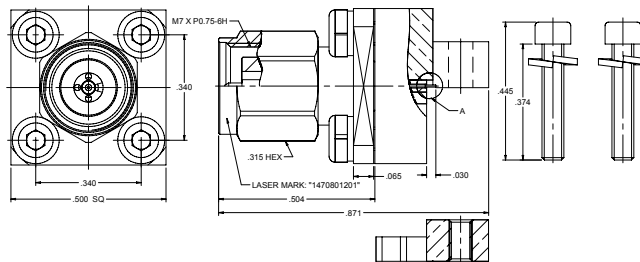
Stainless Steel/Passivated	Impedance	Max Frequency	VSWR
----------------------------	-----------	---------------	------

147-0801-201

50 Ohms

50GHz

Typical VSWR 1.20

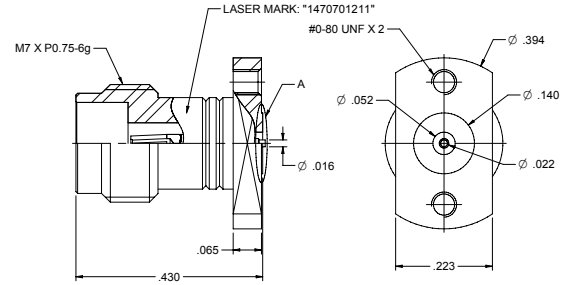


2.4mm Connectors



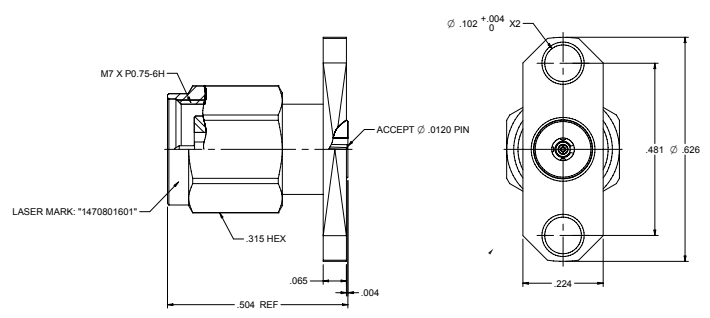
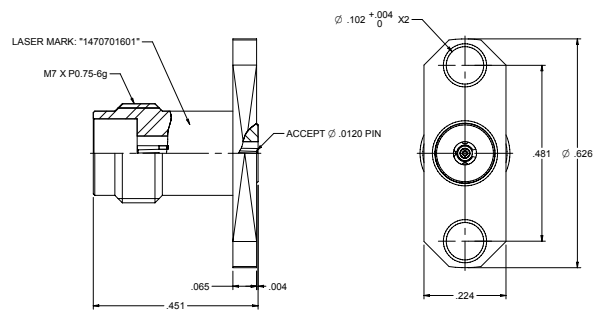
Mini 2-Hole Flange Mount Jack Receptacle

Stainless Steel/Passivated	Type	Impedance	Max Frequency	VSWR
147-0701-211	Jack	50 Ohms	50GHz	Typical VSWR 1.20*



2-Hole Flange Mount Jack and Plug Receptacle

Stainless Steel/Passivated	Type	Impedance	Max Frequency	VSWR
147-0701-601	Jack	50 Ohms	50GHz	Typical VSWR 1.20*
147-0801-601	Plug			



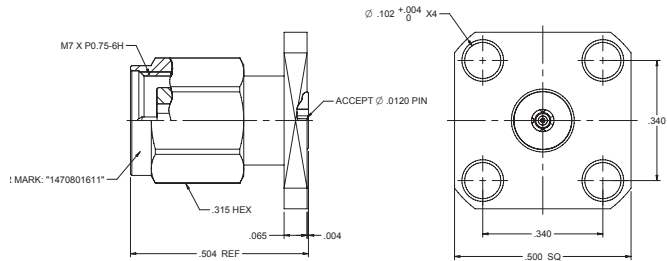
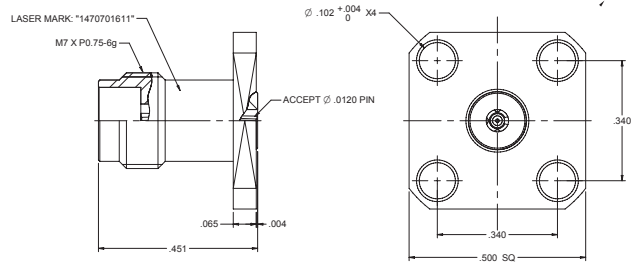
***Notes:**
For use with 1.57mm to 2.79mm board thickness

2.4mm Connectors



4-Hole Flange Mount Jack and Plug Receptacle

Stainless Steel/Passivated	Type	Impedance	Max Frequency	VSWR
147-0701-611	Jack	50 Ohms	50GHz	1.20
147-0801-611	Plug			



2.4mm Adapters

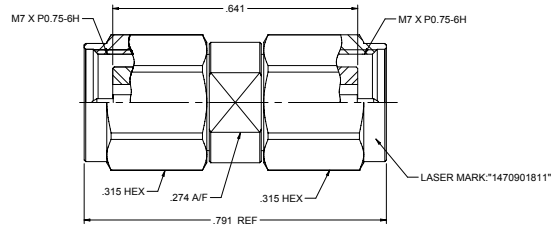
Same Series Adapters



2.4mm Adapters are offered in Same Series and Between Series configurations. They are precision manufactured to RF component industry specifications, with a maximum frequency of 50GHz.

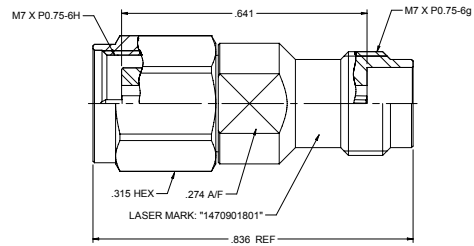
Plug to Plug Same-Series Adapter

Stainless Steel/Passivated	Impedance	Max Frequency	VSWR
147-0901-811	50 Ohms	50GHz	1.20



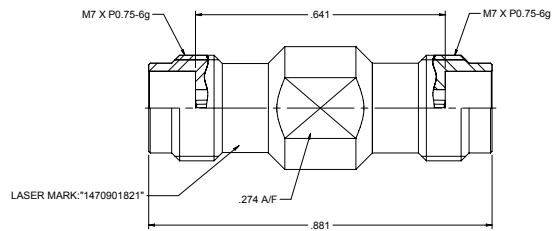
Plug to Jack Same-Series Adapter

Stainless Steel/Passivated	Impedance	Max Frequency	VSWR
147-0901-801	50 Ohms	50GHz	1.20



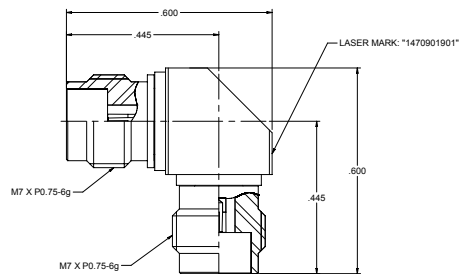
Jack to Jack Same-Series Adapter

Stainless Steel/Passivated	Impedance	Max Frequency	VSWR
147-0901-821	50 Ohms	50GHz	1.20



R/A Jack to Jack Same-Series Adapter

Stainless Steel/Passivated	Impedance	Max Frequency	VSWR
147-0901-901	50 Ohms	50GHz	1.20

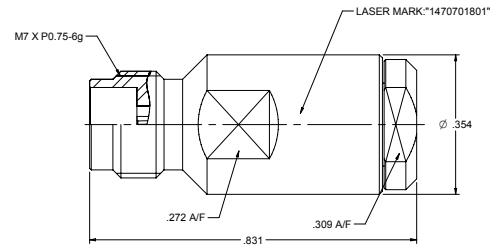


2.4mm Termination



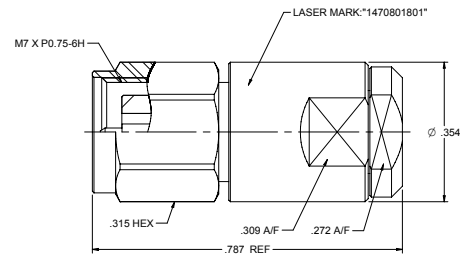
Termination Jack (1/4W) Same-Series

Stainless Steel/Passivated	Impedance	Max Frequency	VSWR
147-0701-801	50 Ohms	50GHz	1.30



Termination Plug (1/4W) Same-Series

Stainless Steel/Passivated	Impedance	Max Frequency	VSWR
147-0801-801	50 Ohms	50GHz	1.30



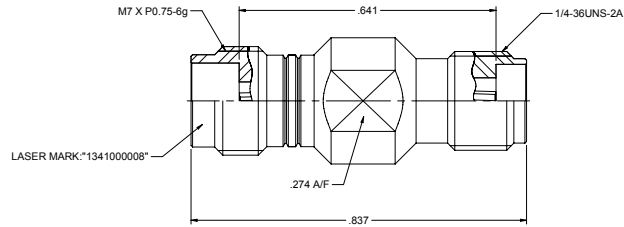
2.4mm to 2.92mm Adapters

Between Series Adapters



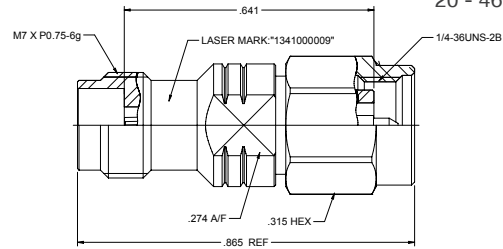
Between-Series, 2.4mm Jack to 2.92mm Jack

Type	Stainless Steel/Passivated	Impedance	Max Frequency	VSWR
2.4mm/2.92mm	134-1000-008	50 Ohms	46GHz	DC - 4GHz 1.05 max 4 - 20GHz 1.08 max 20 - 46GHz 1.15 max



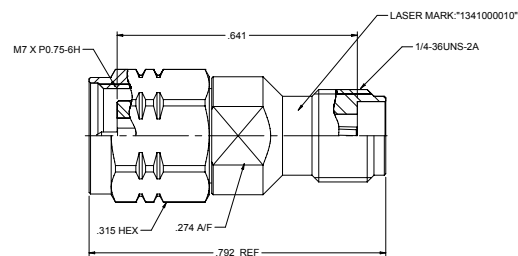
Between-Series, 2.4mm Jack to 2.92mm Plug

Type	Stainless Steel/Passivated	Impedance	Max Frequency	VSWR
2.4mm/2.92mm	134-1000-009	50 Ohms	46GHz	DC - 4GHz 1.05 max 4 - 20GHz 1.08 max 20 - 46GHz 1.15 max



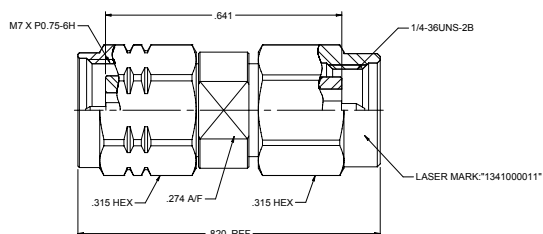
Between-Series, 2.4mm Plug to 2.92mm Jack

Type	Stainless Steel/Passivated	Impedance	Max Frequency	VSWR
2.4mm/2.92mm	134-1000-010	50 Ohms	46GHz	DC - 4GHz 1.05 max 4 - 20GHz 1.08 max 20 - 46GHz 1.15 max



Between-Series, 2.4mm Plug to 2.92mm Plug

Type	Stainless Steel/Passivated	Impedance	Max Frequency	VSWR
2.4mm/2.92mm	134-1000-0011	50 Ohms	46GHz	DC - 4GHz 1.05 max 4 - 20GHz 1.08 max 20 - 46GHz 1.15 max



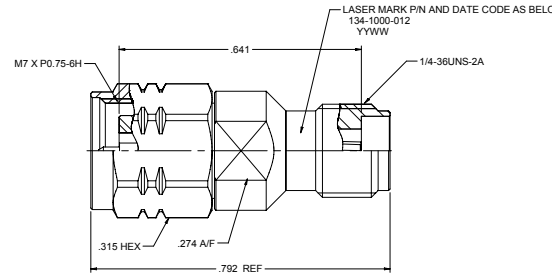
2.4mm Adapters

Between Series Adapters



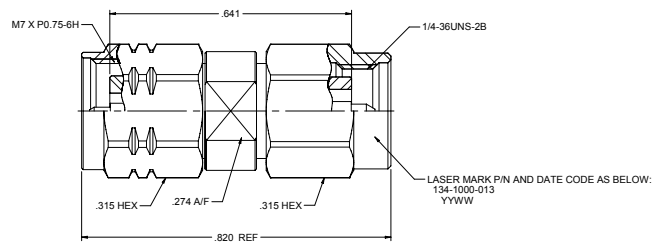
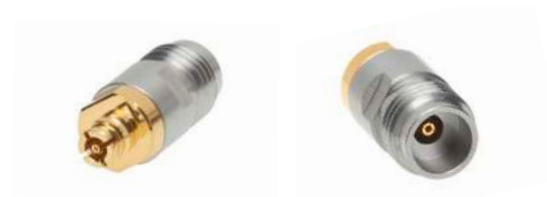
Between-Series, 2.4mm Jack To SMP Jack

Type	Stainless Steel/Passivated	Impedance	Max Frequency	VSWR
2.4mm/SMP	134-1000-012	50 Ohms	40GHz	1.25



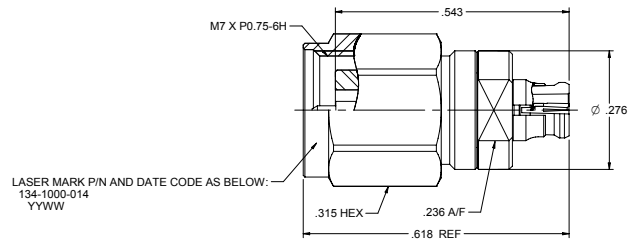
Between-Series, 2.4mm Jack To SMP Plug

Type	Stainless Steel/Passivated	Impedance	Max Frequency	VSWR
2.4mm/SMP	134-1000-013	50 Ohms	40GHz	1.25



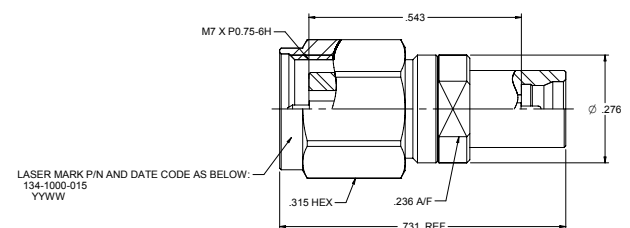
Between-Series, 2.4mm Plug To SMP Jack

Type	Stainless Steel/Passivated	Impedance	Max Frequency	VSWR
2.4mm/SMP	134-1000-014	50 Ohms	40GHz	1.25



Between-Series, 2.4mm Plug To SMP Plug (Limited Dentent)

Type	Stainless Steel/Passivated	Impedance	Max Frequency	VSWR
2.4mm/SMP	134-1000-015	50 Ohms	40GHz	1.25





Cinch Connectivity Solutions North America Office

T +1 507.833.8822
ccsorders@us.cinch.com

Cinch Connectivity Solutions Ltd European Office

T +44 (0) 1245 342060
CinchConnectivity@eu.cinch.com

Cinch Connectivity Solutions Asia Pacific Office

T +86 21 5442 7668
ccs.asia.sales@as.cinch.com

Innovative Interconnect Solutions Across the Globe

In operation since 1917, Cinch supplies high quality, high performance connectors and cables globally to the Aerospace, Military/Defense, Commercial Transportation, Oil & Gas, High End Computer, and other markets. We provide custom solutions with our creative, hands on engineering and end to end approach.

Our diverse product offerings include: connectors, enclosures and cable assemblies utilizing multiple contact technologies including copper and fiber optics. Our product engineering and development activities employ cutting edge technologies for design and modeling, and our various technologies and expertise enable us to deliver custom solutions and products for our strategic partnerships. We also serve a broad range of commercial markets, largely through our highly efficient distribution network.

We aim to exceed our customer's expectations, and to continually provide innovative solutions to the rapidly changing needs of the markets, and customers, we serve. For more information, visit belfuse.com/cinch

