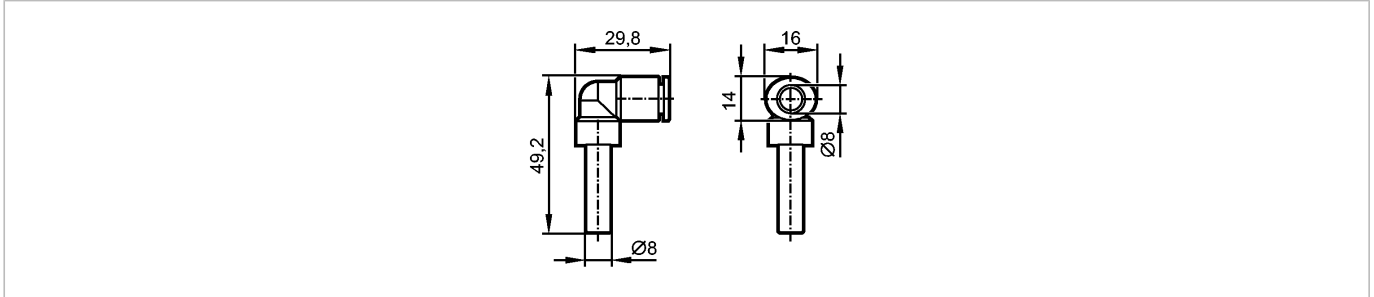




AirBox push-in L-connect 10pcs

Accessories



Product characteristics	
Push-in L-fitting	
Environment	
Ambient temperature [°C]	-20...80
Mechanical data	
Medium	compressed air according to ISO 8573-1: 2001
Operating pressure [kPa]	min. - 95 / max. 2000
Housing materials	housing: PA66; release ring: polyoxymethylene; tooth lock washer: stainless steel; form ring: acrylonitrile butadiene caoutchouc
Weight [kg]	0.083
Remarks	
Pack quantity [piece]	10