



VAC. CONTACTOR, 110KW/400V/AC-3 WITHOUT COIL AUXILIARY CONTACTS 2NO+2NC 3-POLE, SIZE S10 RAIL CONNECTIONS

Figure similar

| | |
|---------------------|-----------------|
| product brand name | SIRIUS |
| Product designation | power contactor |

General technical data:

| | | |
|---|----|------------|
| Insulation voltage | | |
| • Rated value | V | 1 000 |
| Degree of pollution | | 3 |
| Surge voltage resistance Rated value | kV | 8 |
| Mechanical service life (switching cycles) | | |
| • of the contactor typical | | 10 000 000 |
| • of the contactor with added electronics-compatible auxiliary switch block typical | | 5 000 000 |
| • of the contactor with added auxiliary switch block typical | | 10 000 000 |
| Thermal short-time current restricted to 10 s | A | 1 800 |
| Protection class IP | | |
| • on the front | | IP00 |
| • of the terminal | | IP00 |
| Equipment marking | | |
| • acc. to DIN EN 61346-2 | | Q |
| • acc. to DIN EN 81346-2 | | Q |

Main circuit:

| | | |
|---|--|---|
| Number of poles for main current circuit | | 3 |
| Number of NC contacts for main contacts | | 0 |
| Number of NO contacts for main contacts | | 3 |
| Operating current | | |

| | | |
|---|-----|-------------|
| <ul style="list-style-type: none"> • at AC-1 <ul style="list-style-type: none"> — at 400 V at ambient temperature 40 °C Rated value — up to 690 V at ambient temperature 40 °C Rated value — up to 690 V at ambient temperature 60 °C Rated value • at AC-3 <ul style="list-style-type: none"> — at 400 V Rated value — at 690 V Rated value • at AC-4 at 400 V Rated value | A | 330 |
| <ul style="list-style-type: none"> • at AC-1 at 400 V Rated value • at AC-2 at 400 V Rated value • at AC-4 at 400 V Rated value | kW | 197 |
| <ul style="list-style-type: none"> • at AC-1 <ul style="list-style-type: none"> — at 230 V at 60 °C Rated value — at 690 V at 60 °C Rated value — at 690 V Rated value • at AC-3 <ul style="list-style-type: none"> — at 230 V Rated value — at 400 V Rated value — at 500 V Rated value — at 690 V Rated value | kW | 113 |
| | kW | 340 |
| | kW | 340 |
| | kW | 73 |
| | kW | 128 |
| | kW | 160 |
| | kW | 223 |
| Operating power for ≥ 200000 operating cycles at AC-4 <ul style="list-style-type: none"> • at 400 V Rated value • at 690 V Rated value | kW | 55 |
| | kW | 94 |
| Operating frequency <ul style="list-style-type: none"> • at AC-3 maximum | 1/h | 750 |
| Control circuit/ Control: | | |
| Type of voltage of the control supply voltage <ul style="list-style-type: none"> • Rated value | Hz | AC/DC 40 |
| Control supply voltage frequency 2 Rated value | Hz | 60 |
| Auxiliary circuit: | | |
| Number of NC contacts <ul style="list-style-type: none"> • for auxiliary contacts <ul style="list-style-type: none"> — instantaneous contact | | 2 |
| Number of NO contacts <ul style="list-style-type: none"> • for auxiliary contacts | | |

| | | |
|-----------------------------------|---|-----|
| — instantaneous contact | | 2 |
| Operating current at AC-15 | | |
| • at 230 V Rated value | A | 6 |
| • at 400 V Rated value | A | 3 |
| Operating current | | |
| • at DC-12 at 220 V Rated value | A | 1 |
| • at DC-13 at 220 V Rated value | A | 0.3 |
| Operating current | | |
| • at DC-12 | | |
| — at 60 V Rated value | A | 6 |
| — at 110 V Rated value | A | 3 |
| • at DC-13 | | |
| — at 24 V Rated value | A | 10 |
| — at 60 V Rated value | A | 2 |
| — at 110 V Rated value | A | 1 |

UL/CSA ratings:

| | |
|--|-------------|
| Contact rating of the auxiliary contacts acc. to UL | A600 / Q600 |
|--|-------------|

Short-circuit:

| | | |
|---|--|-------------------|
| Design of the fuse link | | |
| • for short-circuit protection of the main circuit | | |
| — with type of assignment 1 required | | fuse gL/gG: 500 A |
| — with type of assignment 2 required | | fuse gL/gG: 500 A |
| • for short-circuit protection of the auxiliary switch required | | fuse gL/gG: 10 A |

Installation/ mounting/ dimensions:

| | | |
|-------------------------|----|--------------|
| Mounting type | | screw fixing |
| • Side-by-side mounting | | Yes |
| Height | mm | 210 |
| Width | mm | 145 |
| Depth | mm | 206 |
| Required spacing | | |
| • for grounded parts | | |
| — at the side | mm | 10 |

Connections/ Terminals:

| | | |
|--|--|----------------------|
| Type of electrical connection | | |
| • for main current circuit | | screw-type terminals |
| • for auxiliary and control current circuit | | screw-type terminals |
| Type of connectable conductor cross-section | | |
| • for AWG conductors for main contacts | | 2/0 ... 500 kcmil |
| • for auxiliary contacts | | |

- solid
- finely stranded with core end processing
- for AWG conductors for auxiliary contacts

2x (0.5 ... 1.5 mm²), 2x (0.75 ... 2.5 mm²), max. 2x (0.75 ... 4 mm²)
 2x (0.5 ... 1.5 mm²), 2x (0.75 ... 2.5 mm²)
 2x (20 ... 16), 2x (18 ... 14), 1x 12

Mechanical data:

Size of contactor S10

Ambient conditions:

Installation altitude at height above sea level maximum m 2 000

Ambient temperature

- during operation °C -25 ... +60
- during storage °C -55 ... +80

Certificates/ approvals:

General Product Approval

Functional Safety/Safety of Machinery

Declaration of Conformity



[Type Examination](#)



Test Certificates

Shipping Approval

other

[Special Test Certificate](#)



[Environmental Confirmations](#)

[Confirmation](#)

other

[other](#)

Further information

Information- and Downloadcenter (Catalogs, Brochures,...)

<http://www.siemens.com/industrial-controls/catalogs>

Industry Mall (Online ordering system)

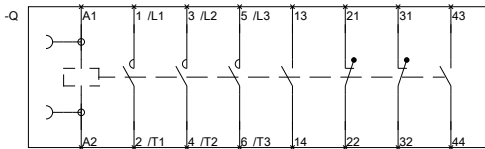
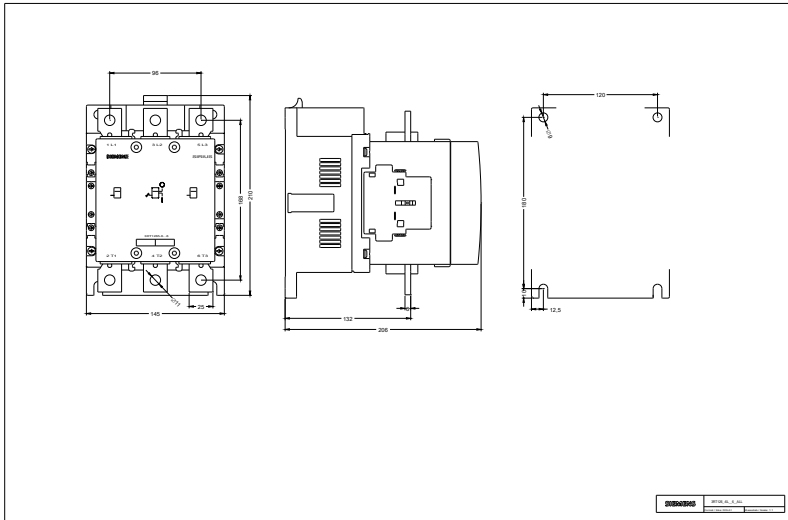
<http://www.siemens.com/industrymall>

Cax online generator

<http://support.automation.siemens.com/WW/CAXorder/default.aspx?lang=en&mlfb=3RT12646LA06>

Service&Support (Manuals, Certificates, Characteristics, FAQs,...)

<http://support.automation.siemens.com/WW/view/en/3RT12646LA06/all>



last modified:

11.03.2015

3RT106--L.6.01_4_IEC.DXF
 3RT107--L.6.01_4_IEC.DXF